

# Futura HD 100 brattpan

Model – Futura HD 100 code 3756394



**metos**  
cooking solutions

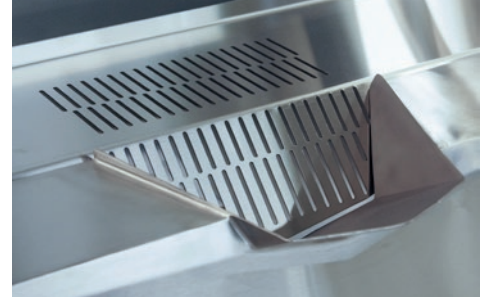
## Metos Cooking Solutions

Ahjonkaarre, FI-04220 Kerava, Finland

Tel. +358 204 3913

mcs@metos.com

mcs.metos.com



## Standard features

- Elevated control pillar
- Temperature control to 250°C
- 1-zone heating
- Electric tilting motor
- Depth 273mm
- 2GN format
- Insulated and balanced lid
- Rounded corners of inner pan
- Emergency all stop control button

## Options

- Water filling to pan
- Recoiled hand-shower
- Strainer plate
- Wired remote control for tilting with IPX6 protection degree

## Materials

- Construction of AISI 304 and 430 stainless steel
- Stainless steel frying surface
- Aluminum encased flat heating elements
- Control panel protection class IPX5

## Volume

### Futura HD 100

Net volume	100 L
Brut volume	116 L
Frying surface	0.4 m <sup>2</sup>
Weight	250 kg

## Electrical connection

Futura HD 100	Connected power/kW	Amp
3/N/PE AC 400V 50/60Hz	20.7 kW	32A

## Water connection

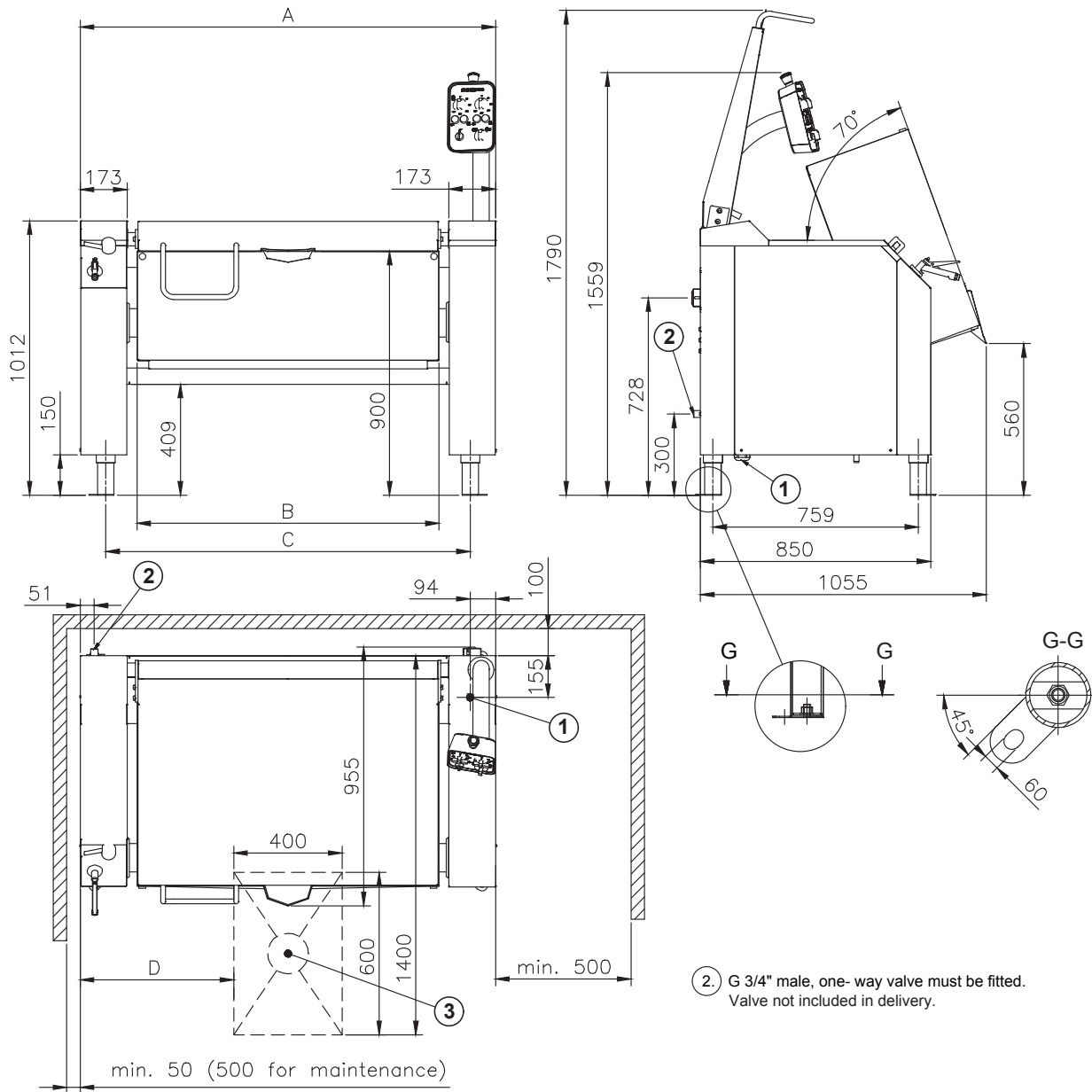
### Futura HD 100

Cold water connection	G3/4" male
-----------------------	------------

# Futura HD 100 brattpan

## Dimensions

1. Electrical connection. Cable gland PG16 for electrical supply cable. Reserve 1.0 meter of cable above floor level.
2. Cold water connection G3/4" male, one-way valve must be fitted. Valve not included in the delivery.
9. Floor drain



② G 3/4" male, one-way valve must be fitted. Valve not included in delivery.

Metos	A	B	C	D
Futura HD 100	1208	790	1020	404

National and local regulations must be observed when installing the pan.

an Ali Group Company



The Spirit of Excellence

# Futura HD 150 Brattpan

Model – Futura HD 150 code 3756283



**metos**  
cooking solutions

## Metos Cooking Solutions

Ahjonkaarre, FI-04220 Kerava, Finland

Tel. +358 204 3913

mcs@metos.com

mcs.metos.com



## Standard features

- Elevated control pillar
- Temperature control to 250°C
- 2-zone heating
- 2x Electric tilting motor
- Depth 273mm
- 3GN format
- Insulated and balanced lid
- Rounded corners of inner pan
- Emergency all stop control button

## Options

- Water filling to pan
- Recoiled hand-shower
- Strainer plate
- Wired remote control for tilting with IPX6 protection degree

## Materials

- Construction of AISI 304 and 430 stainless steel
- Stainless steel frying surface
- Aluminum encased flat heating elements
- Control panel protection class IPX5

## Volume

### Futura HD 150

Net volume	150 L
Brut volume	170 L
Frying surface	0.59 m <sup>2</sup>
Weight	320 kg

## Electrical connection

Futura HD 150	Connected power/kW	Amp
3/N/PE AC 400V 50/60Hz	27.6 kW	50A

## Water connection

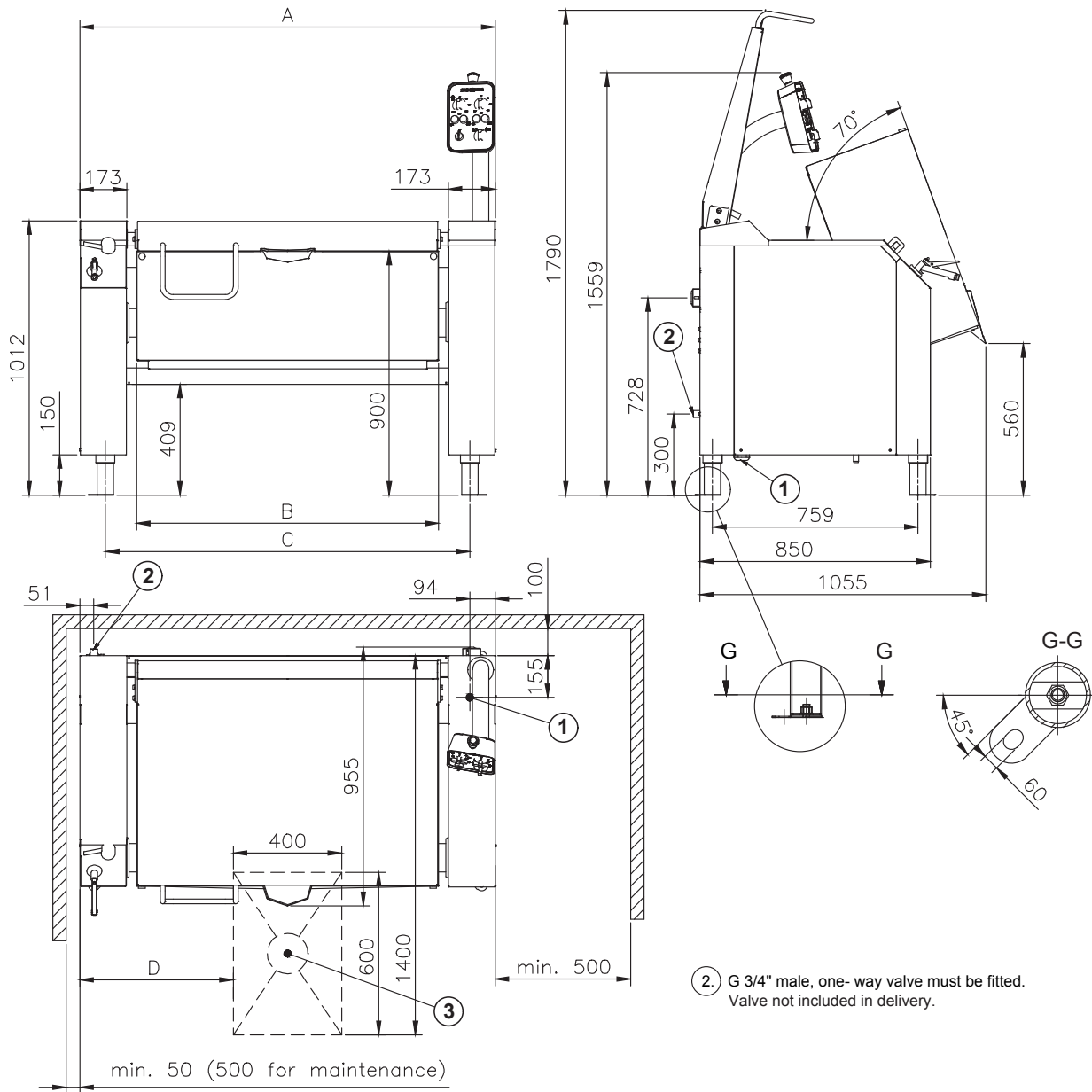
### Futura HD 150

Cold water connection	G3/4" male
-----------------------	------------

# Futura HD 150 Brattpan

## Dimensions

1. Electrical connection. Cable gland PG29 for electrical supply cable. Reserve 1.0 meter of cable above floor level.
2. Cold water connection G3/4" male, one-way valve must be fitted. Valve not included in the delivery.
9. Floor drain



② G 3/4" male, one-way valve must be fitted. Valve not included in delivery.

Metos	A	B	C	D
Futura HD 150	1533	1115	1345	567

National and local regulations must be observed when installing the pan.

an Ali Group Company



The Spirit of Excellence

# Futura HD 200 Brattpan

Model – Futura HD 200 code 3756248



**metos**  
cooking solutions

## Metos Cooking Solutions

Ahjonkaarre, FI-04220 Kerava, Finland

Tel. +358 204 3913

mcs@metos.com

mcs.metos.com



## Standard features

- Elevated control pillar
- Temperature control to 250°C
- 2-zone heating
- 2x Electric tilting motor
- Depth 273mm
- 4GN format
- Insulated and balanced lid
- Rounded corners of inner pan
- Emergency all stop control button

## Options

- Water filling to pan
- Recoiled hand-shower
- Strainer plate
- Wired remote control for tilting with IPX6 protection degree

## Materials

- Construction of AISI 304 and 430 stainless steel
- Stainless steel frying surface
- Aluminum encased flat heating elements
- Control panel protection class IPX5

## Volume

### Futura HD 200

Net volume	200 L
Brut volume	225 L
Frying surface	0.78 m <sup>2</sup>
Weight	370 kg

## Electrical connection

Futura HD 200	Connected power/kW	Amp
3/N/PE AC 400V 50/60Hz	41.4 kW	63A

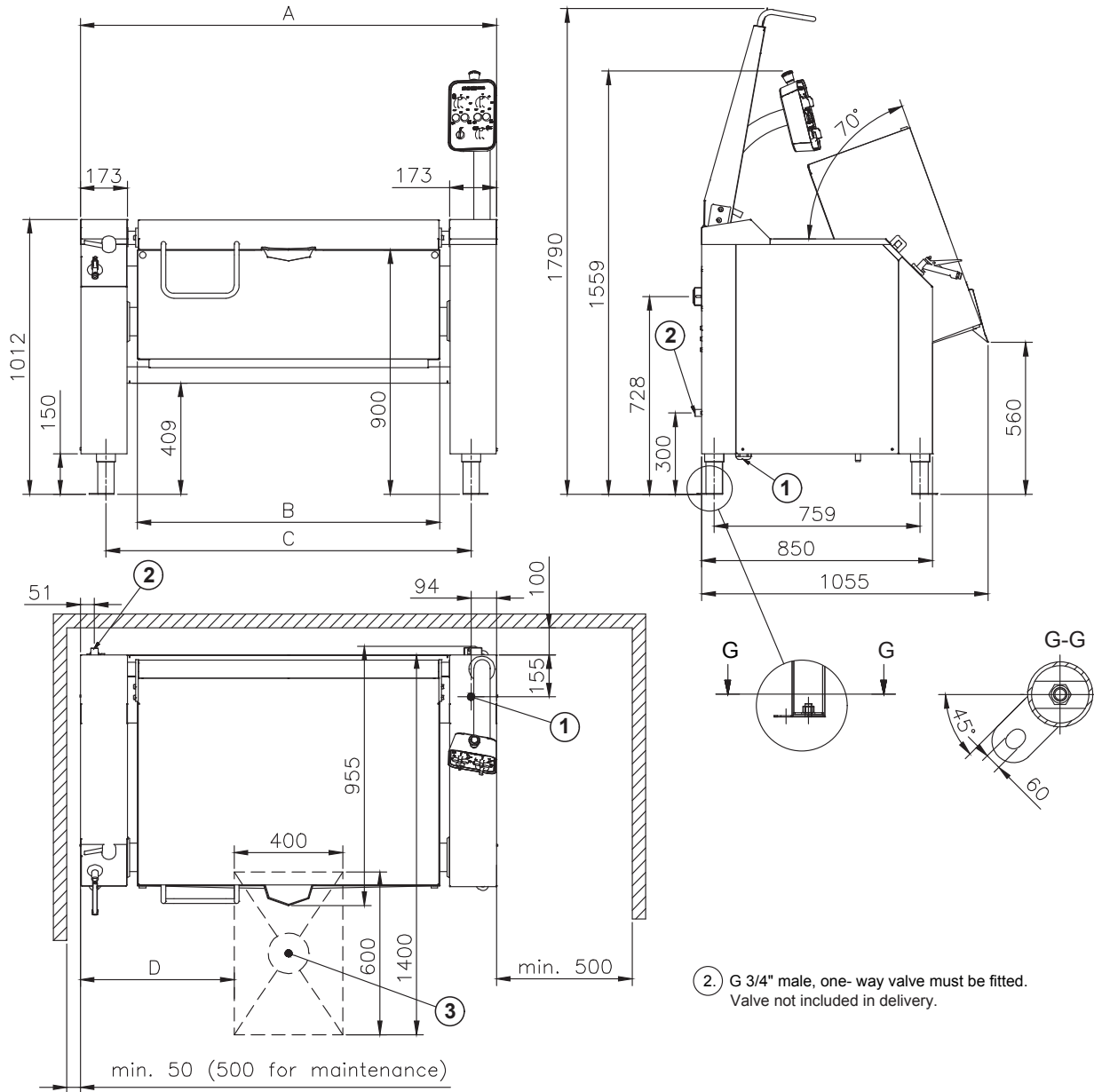
## Water connection

Futura HD 200	
Cold water connection	G3/4" male

# Futura HD 200 Brattpan

## Dimensions

1. Electrical connection. Cable gland PG29 for electrical supply cable. Reserve 1.0 meter of cable above floor level.
2. Cold water connection G3/4" male, one-way valve must be fitted. Valve not included in the delivery.
9. Floor drain



Metos	A	B	C	D
Futura HD 200	1858	1440	1670	730

National and local regulations must be observed when installing the pan.

an Ali Group Company



The Spirit of Excellence