

# metos

## MOTOR-POWERED TURN TRACK WD-C90 & WD-C180

(translation of the original documentation)

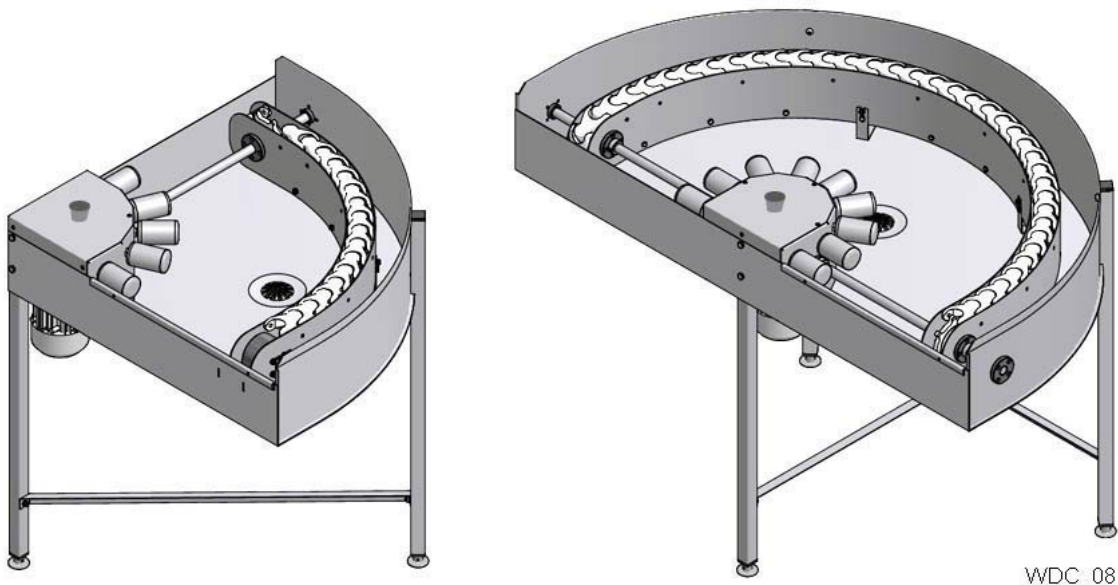


Read the manual before using the machine!

---

### Installation and user manual

---



WDC\_08



---

<b>1. General instructions .....</b>	<b>1</b>
1.1 Symbols used .....	2
1.2 Machine rating .....	3
1.3 Checking that the machine and manual correspond .....	3
1.4 EU Declaration of Conformity .....	4
<b>2. Safety instructions .....</b>	<b>5</b>
2.1 General information .....	5
2.2 Transport .....	6
2.3 Installation .....	6
2.4 Operation .....	6
2.4.1 Risk of crushing .....	6
2.4.2 Risk of slipping .....	6
2.4.3 Sounds .....	6
2.5 Cleaning .....	6
<b>3. Installation .....</b>	<b>7</b>
3.1 General information .....	7
3.2 Requirements for the installation site .....	7
3.2.1 Lighting .....	7
3.2.2 Power supply .....	7
3.2.3 Drain/waste pipe .....	8
3.2.4 Space for servicing .....	8
3.3 Transport and storage .....	8
3.3.1 Unpacking .....	8
3.3.2 Fitting the legs to a WD-C90 .....	9
3.3.3 Recycling .....	10
3.4 Installation .....	11
3.4.1 Preparing for the installation .....	11
3.4.2 Positioning the machine .....	11
3.4.3 Connection to dishwasher .....	12
3.5 Connections .....	13
3.5.1 Electrical connection .....	13
3.5.2 Drain/waste pipe .....	15
3.6 Trial operation .....	16
3.6.1 Start-up schedule .....	16
3.7 Technical documentation .....	16

---

---

<b>4. Instructions for use .....</b>	<b>17</b>
4.1 Preparations .....	17
4.1.1 Machine design .....	18
4.2 Using the machine .....	19
4.2.1 Emergency stop .....	19
4.3 After use – Cleaning .....	20
4.3.1 Incorrect cleaning methods .....	20
4.3.2 Daily cleaning .....	21
4.3.3 Operating problems .....	21
<b>5. Technical specifications .....</b>	<b>22</b>

---

# 1. General instructions

Read the instructions in this manual carefully as they contain important information regarding the correct, effective and safe installation, use and servicing of the machine. Service personnel should have access to all documentation for the machine.

Keep this manual in a safe place so that it can and should be used by other operators of the machine.



- The product is intended to be used together with dishwashers for washing dishware that is found in the general catering and restaurant trade.
- The capacity requirements of the machine can be found in the TECHNICAL DATA chapter.
- The electronics in the machine are RoHS compatible.

Before the machine is started up and used, the following points should be observed:



- The SAFETY INSTRUCTIONS chapter must be studied carefully before commissioning the machine.
- Installation of the machine must be performed in accordance with the requirements and instructions indicated in the INSTALLATION INSTRUCTIONS and TECHNICAL SPECIFICATIONS chapters.
- Any personnel who may at some point use the machine must be trained in its operation, use and care.
- The machine should not be used by anyone suffering from a physical or mental illness.
- A close eye should be kept on any children in the vicinity of the machine to ensure they do not tamper with it.
- All cover plates must be fitted during use.



The machine and equipment requires an annual service. Contact one of our authorised and trained service companies for such a service.

## General instructions

---

### 1.1 Symbols used



This symbol warns of situations where a safety risk may arise. The instructions given should be followed in order to prevent injury and dangerous situations.



This symbol on a machine part warns of electrical equipment. The machine must be entirely non-live during servicing, turn off the power at the power switch and if required, the switch should be locked to prevent unintentional operation. The component may only be removed by a qualified electrician.



This symbol warns that the machine's electronics are sensitive to electrostatic discharge (ESD), which is why a static electricity wristband must be used when handling the electronics at all times.



This symbol explains the right way to perform a task in order to prevent poor results and/or damage to the machine.



This symbol identifies recommendations and hints to help you get the best results when washing, to increase the machine's lifespan and reduce the risk of emergency shutdown.



This symbol explains the importance of careful and regular cleaning of the machine to meet hygiene requirements.



This symbol warns of the importance to read the manual before using the machine.



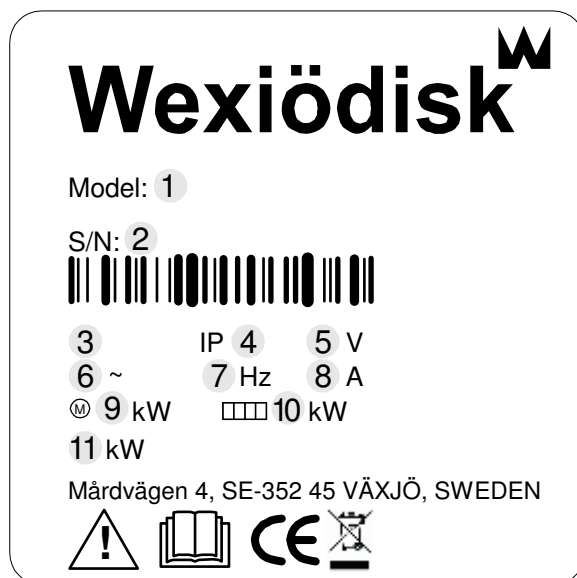
This symbol warns that local regulations must be followed for recycling of packaging etc. as well as the destruction of the machine.



This symbol shows where any earth cable for potential equalisation can be connected. The earth bolt is placed on the machine's stand.

## 1.2 Machine rating

The following data is provided by various rating fields on the turn track's rating plate:



1. Machine type
2. Machine serial number
3. Year of manufacture
4. Enclosure protection class
5. Voltage
6. Number of phases with or without neutral
7. Frequency
8. Main fuse
9. Motor output
10. Electrical heating output
11. Max. output

## 1.3 Checking that the machine and manual correspond

Check that the type description on the rating plate corresponds with the type description on manual cover page. If manuals are missing, it is possible to order new ones from the manufacturer or the local distributor. When ordering new manuals, it is important to quote the machine number found on the rating plate.

## 1.4 EU Declaration of Conformity

A so-called EU Declaration of Conformity is provided on delivery of the machine.

**Wexiödisk**

### CE DECLARATION OF CONFORMITY

This declaration of conformity only refers to the machine/product in the condition in which it is supplied, not any additions or modifications made by the customer/user.

1. Manufacturer: Wexiödisk AB Mårdvägen 4 S-352 45 Växjö, Sweden  
 Tel: +46 (0)470 77 12 00 Fax: +46 (0)470 237 52 E-mail: wexiodisk@wexiodisk.com

2. Representative: BSHS & General Trading, Loh Rydberg Group Ltd, DSP 600, Elektronika Service OOO, Fas Lus ehf, JZB, Martin Food Equipment Ltd, Moffitt Pty Ltd, M/s Alshwarya Consolidates Pvt Ltd, Nakankishi Mfg Co Ltd, QMS corporation, Retal doo, SHS Hygiene Kundilan, TPN Group, Wexiödisk AB, Wexiödisk UK

3. Compiler of technical documentation: Magnus Ericson

4. Our machines are manufactured **2016** in accordance with applicable EU directives and we declare under sole responsibility that the following products:

5. CE Declaration of Conformity:  
 EU's Machinery Directive 2006/42/EC, annex IIA  
 EU's Low-voltage directive 2006/95/EC  
 EU's EMC-directive 2014/30/EU  
 EU's WEEE directive 2002/96/CE  
 EU's RoHS-directive 2011/65/EU

6. Harmonized standards:  
 EN 12100 Machine safety: General principles for design - Risk assessment and risk reduction  
 EN 50106 Safety - Particular rules for machine tools  
 EN 50129 Specification for degrees of protection provided by enclosures (IP code)  
 EN 55022 Measurement methods for electromagnetic interference of household appliances and similar apparatus with regard to human exposure  
 EN 55024-1 & 2 Electromagnetic compatibility (EMC) - Immunity standard for industrial environments  
 EN 55014-1 & 2 Electromagnetic compatibility - Requirements for household appliances, electrical tools and similar apparatus - (EMC) - Part 1: Emission  
 EN 50581 Technical documentation for the assessment of electrical and electronic products with respect to the restriction of hazardous substances

7. The above directives and standards are common to the different machine groups.  
 Standards in the tables below are specific to the different machine groups.

Single tools, Portable tools, Universal machines with accessories	Harmonized standards to: EU's Machinery Directive 2006/42/EC, annex IIA
WD-400: (Y1000-)	EN 60205-1 Safety of hand-held and guided machines and tools - Safety of hand-held
WD-P1000-7 & WD-P1000-8 & WD-P1000-9 & WD-P1000-10	EN 60205-2-400 Safety of hand-held and guided machines and tools - Safety of hand-held
WD-11 & WD-15 & WD-20 & WD-25 & WD-30 & WD-35 & WD-40 & WD-45 & WD-50 & WD-55 & WD-60 & WD-65 & WD-70 & WD-75 & WD-80 & WD-85 & WD-90 & WD-95 & WD-100	EN 60205-2-400 Safety of hand-held and guided machines and tools - Safety of hand-held
WD-110 & WD-120 & WD-130 & WD-140 & WD-150 & WD-160 & WD-170 & WD-180 & WD-190 & WD-200	EN 60205-2-400 Safety of hand-held and guided machines and tools - Safety of hand-held
WD-210 & WD-220 & WD-230 & WD-240 & WD-250 & WD-260 & WD-270 & WD-280 & WD-290 & WD-300	EN 60205-2-400 Safety of hand-held and guided machines and tools - Safety of hand-held
WD-310 & WD-320 & WD-330 & WD-340 & WD-350 & WD-360 & WD-370 & WD-380 & WD-390 & WD-400	EN 60205-2-400 Safety of hand-held and guided machines and tools - Safety of hand-held
WD-410 & WD-420 & WD-430 & WD-440 & WD-450 & WD-460 & WD-470 & WD-480 & WD-490 & WD-500	EN 60205-2-400 Safety of hand-held and guided machines and tools - Safety of hand-held
WD-510 & WD-520 & WD-530 & WD-540 & WD-550 & WD-560 & WD-570 & WD-580 & WD-590 & WD-600	EN 60205-2-400 Safety of hand-held and guided machines and tools - Safety of hand-held
WD-610 & WD-620 & WD-630 & WD-640 & WD-650 & WD-660 & WD-670 & WD-680 & WD-690 & WD-700	EN 60205-2-400 Safety of hand-held and guided machines and tools - Safety of hand-held
WD-710 & WD-720 & WD-730 & WD-740 & WD-750 & WD-760 & WD-770 & WD-780 & WD-790 & WD-800	EN 60205-2-400 Safety of hand-held and guided machines and tools - Safety of hand-held
WD-810 & WD-820 & WD-830 & WD-840 & WD-850 & WD-860 & WD-870 & WD-880 & WD-890 & WD-900	EN 60205-2-400 Safety of hand-held and guided machines and tools - Safety of hand-held
WD-910 & WD-920 & WD-930 & WD-940 & WD-950 & WD-960 & WD-970 & WD-980 & WD-990 & WD-1000	EN 60205-2-400 Safety of hand-held and guided machines and tools - Safety of hand-held

7. Single tools, Portable tools, Universal machines with accessories

7. Special machines

8. Växjö 2016-04-20

Magnus Tjesson  
Managing Director

CE\_16\_2

1. Contact details of the manufacturer (Wexiödisk AB, Mårdvägen 4, SE-35245 Växjö, SWEDEN, Tel.: +46 470 771200, Fax: +46 470 23752, E-mail: wexiodisk@wexiodisk.com).
2. Representatives of Wexiödisk AB.
3. Person responsible for the product's documentation.
4. Year of manufacture of the product.
5. The EU Directives with applicable provisions to which all the machines, special machines and accessories comply.
6. Harmonised standards for the Directives specified, and which the machines, special machines and accessories meet, wherever relevant.
7. Model designation and serial number of the machines, special machines and accessories the document applies to.
8. Place and date with signature and name (in block letters) of the person responsible for ensuring compliance with legislation and regulations.



## 2. Safety instructions



Read the chapter GENERAL INSTRUCTIONS carefully before starting work.

### 2.1 General information



The machine is CE marked, which means that it complies with the requirements of the EU Machinery Directive with regard to product safety. Product safety means that the design of the machine will prevent personal injury or damage to property. The CE mark is only valid for an unmodified machine. Any damage to the machine arising from failure to follow the instructions will invalidate the supplier's warranty and product liability.



Installation, repairs and servicing must be performed by an authorised engineer in accordance with local and national rules in effect for such work with water and drainage systems, electricity, ventilation and steam. We recommend that the work is performed by the manufacturer or one of the manufacturer's authorised service companies.

To further improve safety during installation, operation and servicing, the operator and the personnel responsible for installing and servicing the machine should read the safety instructions carefully.



The machine's electronics are sensitive to electrostatic discharge (ESD), which is why a static electricity wristband must be used when handling the electronics at all times.

Before the machine enters service, ensure that the personnel are given the necessary training in handling and looking after the machine.

In order to avoid dangerous situations, the following must be followed:



- Switch off the machine immediately in the event of failure or malfunction.
- Make sure the machine is non-live before removing the cover plate. Turn off the power using the power switch. If required, the switch must be locked to prevent unintentional operation.
- The machine and equipment requires an annual service. The machine should be serviced by a person authorised or trained to do so by us. Use original spare parts.
- Warranty repairs must be performed by an authorised company. Contact an authorised service company to draw up a programme of preventive care and maintenance. For authorised service companies, please see [www.wexiodisk.com](http://www.wexiodisk.com) or contact Wexiödisk AB.
- The regular checks described in the manual must be carried out in accordance with the instructions.

## Safety instructions

---

### 2.2 Transport



Handle the machine with care during unloading and transport; there is a risk of it tipping over. Never lift or move the machine without using the wooden packaging to support the stand.

### 2.3 Installation



- The machine is designed for quick electrical installation.
- The machine must be connected to a lockable main switch.
- Make sure that the mains voltage is the same as that indicated on the machine's rating plate.



For increased safety, it is recommended to equip the installation with a ground fault circuit breaker.

### 2.4 Operation



Be very careful around the machine when it is in operation.

#### 2.4.1 Risk of crushing



Avoid contact with the turn track's conveyor during operation, as the movement of the conveyor may result in crushing injuries.

#### 2.4.2 Risk of slipping



The floor should be kept clean and dry to eliminate any risk of slipping. Mop up any water and leftover food that has been spilt.

#### 2.4.3 Sounds



The machine is not silent during operation, see TECHNICAL SPECIFICATIONS. Hearing protection may therefore need to be used.

### 2.5 Cleaning



When using a high-pressure washer or hose, do not aim the jet towards the turn track's drive motor. In order to satisfy current requirements, electrical components of approved IP classes are used in motor-powered turn tracks. No enclosure class is designed to withstand high pressure.

## 3. Installation



Read the chapters GENERAL INSTRUCTIONS and SAFETY INSTRUCTIONS carefully before starting work.

### 3.1 General information



Read these instructions carefully, as they contain important information regarding the correct installation method.

- The instructions should be used together with the dishwasher's wiring diagram. These can be found in the machine's electrical cabinet.
- The machine can be equipped with a number of different options. Certain options may be standard in a number of countries. Check what your machine is equipped with.
- If holes need to be drilled in the machine, the holes must be fitted with an edge strip or similar protection.

### 3.2 Requirements for the installation site

The requirements for installation of the product are the same as for the dishwasher to which it is connected. (See also the dishwasher's installation and user manual.)

#### 3.2.1 Lighting

In order to ensure the best possible working conditions during installation, operation, servicing and maintenance, make sure that the machine is installed in a well-lit room.

#### 3.2.2 Power supply

Power supply connections are made by qualified personnel in a way that complies with local and national regulations. The machine's capacity requirements are stipulated in TECHNICAL SPECIFICATIONS.

## Installation

---

### 3.2.3 Drain/waste pipe

There must be a drain pipe with an effective trap for the machine's waste water and for water used for rinse cleaning. The machine's capacity requirements for drainage are stipulated in TECHNICAL SPECIFICATIONS.

### 3.2.4 Space for servicing

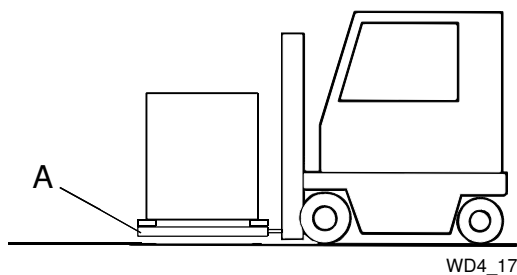
A 1-metre area should be left clear in front of the machine for servicing purposes.

## 3.3 Transport and storage

Always transport the product in an upright position.



Take care during transport, as there is a risk of tipping. N.B.! The machine must not be transported without a pallet or other support. This may also result in damage. When transporting the machine without a normal wooden pallet, always check that none of the components underneath the machine can be damaged.



*A=Wooden pallet*



If the turn track is not to be installed immediately, it must be stored in a frost-free area where the air is dry.

### 3.3.1 Unpacking

Check that all parts have been delivered by comparing them with the delivery note.

Remove the packing material. Inspect the product for any transport damage.

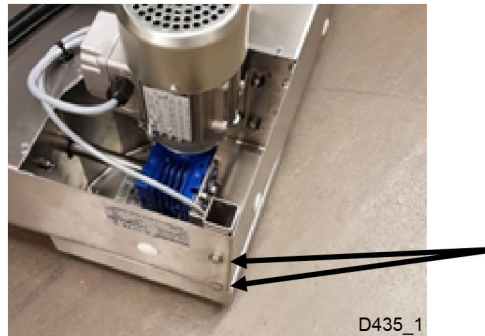
## Installation

---

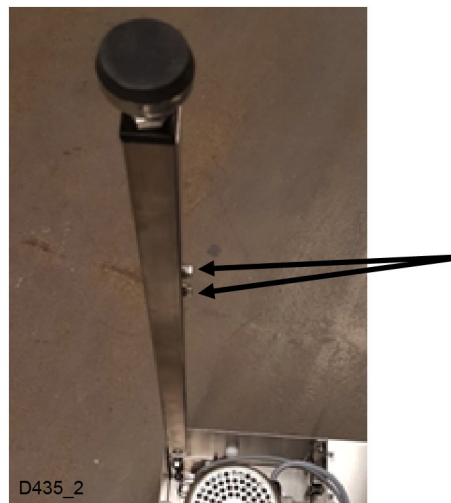
### 3.3.2 Fitting the legs to a WD-C90

The package is supplied with two legs and one supporting strut dismantled. A short square tube is fitted to provide transport support. All screws are supplied. These are screwed into their respective legs or alternatively the transport support.

- Place the turn track upside-down on a flat surface and remove the transport support. This is held in place with two screws, washers and nuts.



- Fit the leg in the place where the transport support was previously. Observe the heading of the screws on the leg. These must be used for fitting the supporting strut later.



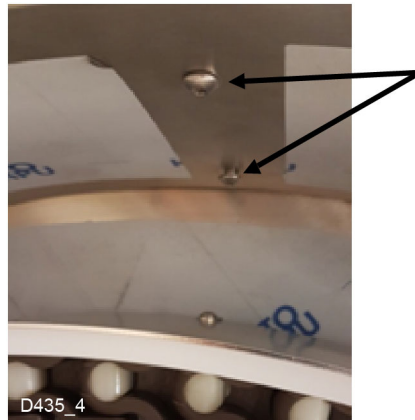
- Turn the WD-C90 onto its side.



## Installation

---

- The second leg is mounted on the outside of the transport turn track and is screwed from the inside using two internal hex head screws.



- Finally, the supporting strut is assembled with four screws.



The WD-C90 can now be connected to other machines.

### 3.3.3 Recycling

Packaging must be sent for destruction or recycling in accordance with local regulations.



The machine is manufactured from stainless steel plate, among other things, and also contains electronic components. Recycling of the appliance when its economic lifetime has been reached must be carried out in accordance with current rules and regulations.

## 3.4 Installation

### 3.4.1 Preparing for the installation



- Check that there is sufficient room for the machine at the installation location.
- Check that the installation location has the correct waste connection.

### 3.4.2 Positioning the machine

Check the following points before the machine is placed in position:

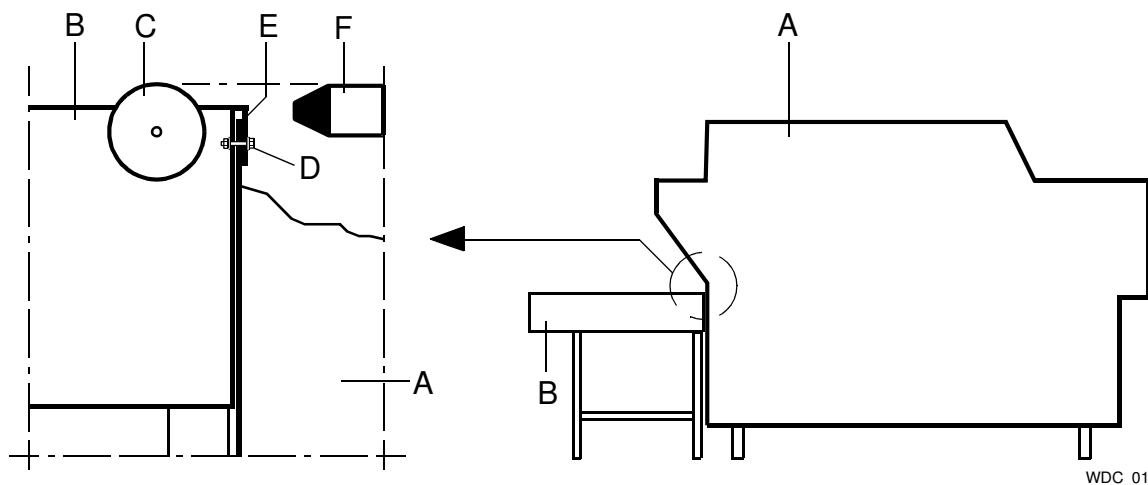


- Check that the fuse for the machine at the site is off, blocked and that outgoing electrical circuits from the machine are non-live.
- Remove the protective plastic on the sides which are to be stood against a wall.

Place the machine in position and check that it, and any accessories, are horizontally level. Adjust the height with the legs.

## Installation

### 3.4.3 Connection to dishwasher



*Connection of the track directly to the dishwasher's outfeed opening*

*A=Dishwasher*

*B=Turn track*

*C=Roller*

*D=Screw+washer+nuts*

*E=Cover strip*

*F=Dishwasher's loading cradle*



- Connect the turn track and other peripheral equipment to the dishwasher in accordance with the dishwashing room's layout drawing.
- Check that the machine (ICS) that WD-C90 / WD-C180 is being connected to have the correct set point value (row 25) set for this option.
- Firmly attach the turn track's cover strip (E) to the lower edge of the dishwasher's outfeed opening.
- Adjust the height using the turn track's legs. The turn track must be horizontal. The upper edge of the turn track's conveyor belt and rollers (C) must be level with the sliding surface of the machine's loading cradle (F) or be a few millimetres lower.
- Secure the turn track to the machine with screws using the existing holes at (D). Sometimes holes may need to be drilled in the lower edge of the outfeed opening, for example, if a drying zone is installed after the machine.



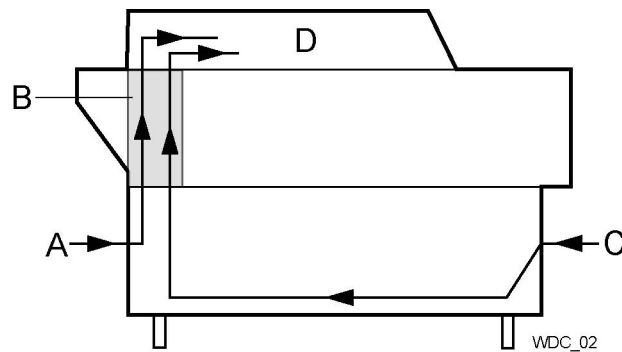
## 3.5 Connections

### 3.5.1 Electrical connection

Information about electrical connections can be found on the dishwasher's wiring diagrams. The wiring diagrams are shown on the inside of the electrical cabinet door. Store the diagrams in the electrical cabinet after installation.

#### Cabling from the turn track

Depending on the position of the turn track, the electricity cable is drawn through an existing plugged hole at (A) on the dishwasher's outfeed side or at (C) on the infeed side. The electric cable is drawn through the cable duct behind the front panel (B) and on to the electrical cabinet (D).



*Drawing of electricity cable from the turn track*

*A=Plugged hole, outfeed side,*

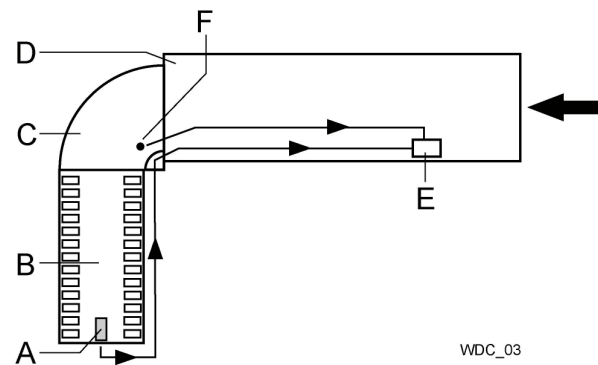
*B=Front panel,*

*C=Plugged hole, infeed side,*

*D=Electrical cabinet*

## Cabling from limit switch and emergency stop

The cable from the limit switch on the connected roller table and the cable from the turn track's emergency stop are drawn through an existing hole at the end of the dishwasher and on to the terminal box located in the lower part of the dishwasher behind the front panels.



WDC\_03

*Connection of 90° track and roller table on the machine's outfeed side*

*A=Limit switch*

*B=Roller table*

*C=Turn track*

*D=Dishwasher*

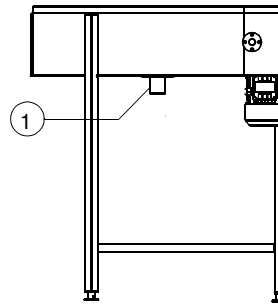
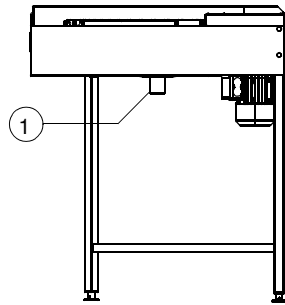
*E=Terminal box*

*F=Emergency stop*

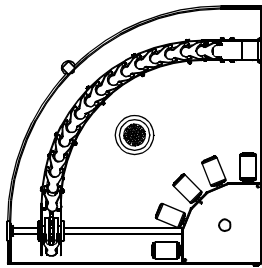
## Installation

### 3.5.2 Drain/waste pipe

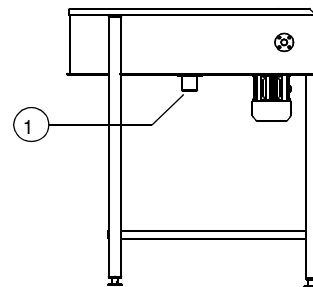
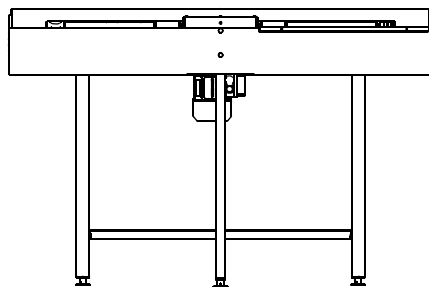
Connect the drain at (1). The drain pipe can be connected to the dishwasher drain or run to a floor drain, where it must end above the water level. The drain should be a 50 mm metal pipe if there is a risk of mechanical collision.



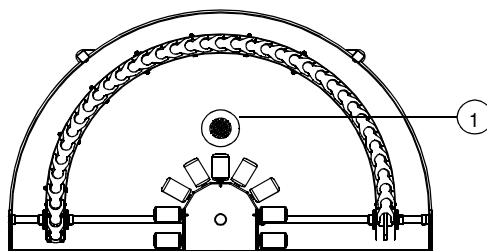
11298\_r1



*Motor-powered turn track 90°*  
*1=Drain connection 50 mm*



11299\_r1



*Motor-powered turn track 180°*  
*1=Drain connection 50 mm*

## 3.6 Trial operation

Test the turn track together with the dishwasher. Prepare the machine for a trial run by following the INSTRUCTIONS FOR USE in the user manuals for the machines. The instructions describe the measures that must be taken to prepare the machine for operation.

### 3.6.1 Start-up schedule

This should be completed when the machine is started up and used.

<b>Machine type:</b>
<b>Machine serial number:</b>
<b>Installation date:</b>

Read the installation and user manuals carefully. Then check the following points:

#### 1. Check:

- The direction of rotation of the turn track/conveyor belt.  
N.B.! If the feed is moving in the wrong direction, stop the machine immediately and switch over two of the phases for the turn track/conveyor's drive motor.
- The turn track/conveyor belt's tensioning must NOT be "loose"; remove one link if this is the case.
- Transport of baskets along the turn track.
- Limit switch function. When a basket activates the limit switch on a connected roller table, the turn track's conveyor belt and dishwasher should stop. When the basket is removed the equipment should restart automatically.
- When the emergency stop function is activated, the dishwasher will also stop.
- Drainage system integrity.

#### 2. Train and inform personnel concerning:

- Washing
- Care (daily, weekly and other frequencies)
- Recommendation for annual service

## 3.7 Technical documentation

For correct use and servicing, it is essential that the documentation accompanying the equipment be made available to personnel who will be using it. The installation and user manual, which describes handling and care, among other things, should be stored near the equipment.

## 4. Instructions for use



Read the chapters GENERAL INSTRUCTIONS and SAFETY INSTRUCTIONS carefully before starting work.



This chapter describes what must be done with the machine:

- Prior to use
- Regarding the way in which the machine should be used
- Following use
- In connection with troubleshooting

The use of the machine is dependent on how the machine is equipped.

### 4.1 Preparations

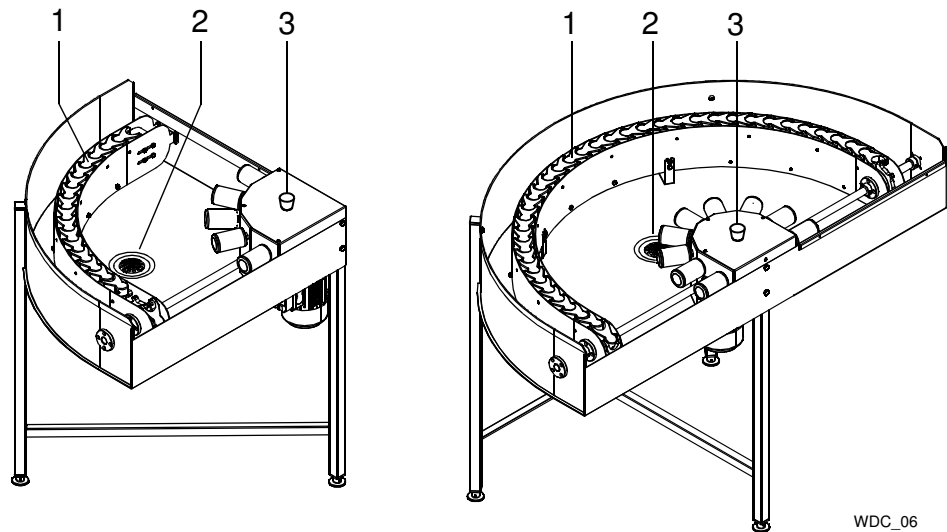
Check:



- That the machine and removable parts have been cleaned. If not – clean them!
- That removable parts are correctly in place
- That the dishwasher connected has been started up
- That the power switch is in the ON position

## Instructions for use

### 4.1.1 Machine design



*90° and 180° turn track*

*1=Conveyor belt*

*2=Drain filter*

*3=Emergency stop*

## Instructions for use

### 4.2 Using the machine

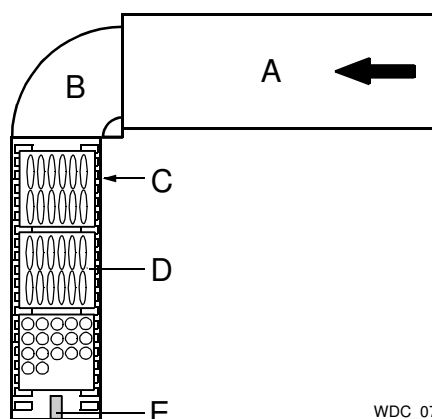


The turn track must not be used as a storage area for rubbish or for storing other objects.

- The motor-powered turn track is controlled from the dishwasher and is in operation when the dishwasher is feeding baskets through the machine.
- When a basket of clean items leaves the machine, it is transported by the turn track to the connected roller table.
- Once the roller table is full of baskets, the first basket will activate the roller table's limit switch. The dishwasher and the turn track's conveyor belt (1) stop.
- Remove the baskets from the roller table. The dishwasher and turn track start automatically.



A motor-powered turn track can also be connected to the dishwasher's infeed opening and used for transporting baskets of dirty items into the machine.



WDC\_07

*Example of installation. Dishwasher with 90 ° turn track and roller table*

*A=Dishwasher*

*B=Turn Track*

*C=Roller table*

*D=Basket*

*E=Limit switch (the limit switch is activated by a basket and the equipment stops)*

#### 4.2.1 Emergency stop

- If the turn track is stopped using the emergency stop (3), the dishwasher also stops.
- If an emergency stop button is pressed during operation, the reason for the emergency stop must be rectified.
- Reset the emergency stop by turning the knob in the direction of the arrows.
- Restart the machine and turn track using the feed button on the dishwasher's control panel.

## 4.3 After use – Cleaning



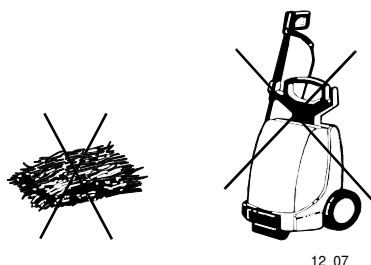
HACCP is a preventive inspection system which ensures that hygiene requirements are met during the washing process and cleaning of the equipment. As a result of its design, the turn track meets strict hygiene requirements. Regular, thorough cleaning is also important from a hygiene perspective. Equipment that is properly cleaned reduces the risk of dirt accumulating, increases the service life of the equipment and reduces the risk of urgent interruptions to operation.

### 4.3.1 Incorrect cleaning methods



N.B.! An incorrect cleaning method may damage the equipment. The following points must be observed:

- Do NOT use steel wool, as this will cause corrosion.
- If detergent is used, it must not contain abrasives. Detergents containing abrasives will damage the stainless steel panels.
- Exercise caution when rinsing with a water hose. Water can enter and damage electrical equipment.
- Pressure washers can damage the machine and must NOT be used for cleaning purposes. Never use a pressure washer to clean the floor within 1 metre of the machine. The supplier cannot be held liable for any faults caused by the use of pressure washers on the machine and any such use may invalidate the warranty. There is a risk of splashing even if the floor is hosed down.
- Do not allow the chain to come into contact with alkaline cleaning products, such as descaling agents.



12\_07

*Steel wool and pressure washers must not be used for cleaning*



## Instructions for use

---

### 4.3.2 Daily cleaning



Before cleaning begins, the dishwasher must be switched off.

- Remove the drain filter (2) and clean it.
- Rinse the inside of the turn track (we recommend cleaning gun WD240.9009 for this).
- Replace the filter.
- Wipe the outside of the turn track with a soft, damp cloth.

### 4.3.3 Operating problems

When you contact service personnel, you will need to provide the following information:

- The equipment's type description
- Machine serial number and installation date
- A brief description of the problem.
- What happened to cause the problem

## 5. Technical specifications

The manufacturer reserves the right to make changes to the technical data.

General data	WD-C90	WD-C180
Weight excl. packaging (kg)	37	54
Packaging weight (kg)	10	14
Basket size (mm)	500x500	500x500
Enclosure protection class (IP)	55	55

Electrical connection	WD-C90	WD-C180
Drive motor (kW)	0.12	0.12
Total connected power (kW)	0.12	0.12

Connections	WD-C90	WD-C180
Drain connection (mm)	50	50