

metos

BLENDER HAMILTON BEACH

HBH550R/HBH650R/HBF600R



Installation and Operation Manual

Blender Safety

IMPORTANT: This operation manual should be reviewed with all equipment operators as part of your operator training program. Keep manual available in the work area for users' easy reference.

IMPORTANT SAFETY INSTRUCTIONS

WARNING – When using electrical appliances, basic safety precautions should always be followed to reduce the risk of fire, electric shock, and/or injury to persons, including the following:

For HBH550R, HBH650R, and HBF600R Models

1. Read all instructions.
2. This appliance is not intended for use by persons with reduced physical, sensory, or mental capabilities, or lack of experience and knowledge, unless they are closely supervised and instructed concerning use of the appliance by a person responsible for their safety.
3. This appliance shall not be used by children. Keep the appliance and its cord out of reach of children.
4. Close supervision is necessary when any appliance is used near children. Children should be supervised to ensure that they do not play with the appliance.
5. Plug into a grounded 3-prong electrical socket.
6. Do not remove ground prong.
7. Do not use an adapter.
8. Do not use an extension cord.
9. To protect against risk of electrical shock, do not put cord, plug, base, or motor in water or other liquid.
10. Do not spray the base with a high-pressure water jet or steam cleaner.
11. Turn the appliance OFF (●), then unplug from outlet when not in use, before putting on or taking off parts, and before cleaning. To unplug, grasp the plug and pull from the outlet. Never pull from the power cord.
12. Avoid contact with moving parts. Do not attempt to defeat jar pad interlock sensor.
13. Do not operate any appliance with a damaged supply cord or plug, or after the appliance malfunctions or has been dropped or damaged in any manner. Supply cord replacement and repairs must be conducted by the manufacturer, its service agent, or similarly qualified persons in order to avoid a hazard. Call the provided customer service number for information on examination, repair, or adjustment.
14. Do not use outdoors.
15. Do not let cord hang over edge of table or counter or touch hot surfaces, including stove.
16. Keep hands and utensils out of the jar and away from the cutting blade, while blending or chopping food, to reduce the risk of severe personal injury and/or damage to the blender or available attachments (attachments may not be provided with blender). A rubber spatula may be used but must be used only when blender is not running.
17. To prevent damage to blender, jar, or cutter assembly, DO NOT move or shake blender while in operation. If blending action stops during operation, turn blender OFF (●), remove jar from base, remove jar cover, and use a thin rubber spatula to push mixture toward cutters.
18. Blades are sharp; handle carefully—especially when emptying or cleaning the blender jar.
19. Inspect jar and cutter assembly daily. Do not use broken, chipped, or cracked jar. Check cutter for wear, nicks, or broken blades. Do not use broken or cracked cutting blades.
20. If cutter assembly blades are loose, discontinue use immediately and replace cutter assembly. Do not attempt to repair or tighten cutter assembly.
21. Always operate blender with cover in place.

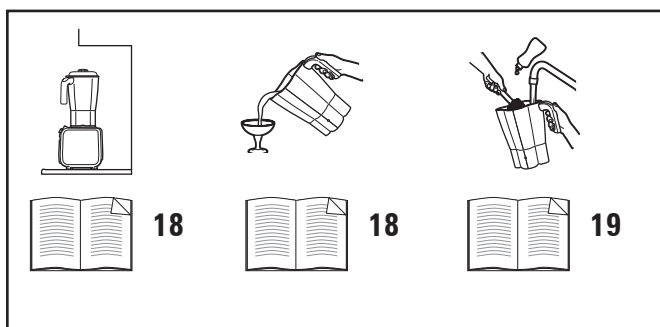
22. Do not use appliance for other than intended purpose.
23. Do not leave blender unattended while it is operating.
24. Check that the appliance is OFF (○) before plugging cord into wall outlet. To disconnect, turn the control to OFF (○); then remove plug from wall outlet. To unplug, grasp the plug and pull from the outlet. Never pull from the power cord. Do not attempt to defeat jar pad interlock sensor.
25. **CAUTION!** In order to avoid a hazard due to inadvertent resetting of the thermal cut-out, this appliance must not be supplied through an external switching device, such as a timer, or connected to a circuit that is regularly switched on and off by the utility.
26. To prevent possibility of serious personal injury, keep hands out of blender container while operating blender. Always operate blender with container lid in place.
27. This appliance is intended to be used for commercial applications, for example in kitchens of restaurants, canteens, hospitals and in commercial enterprises such as bakeries, butcheries, etc., but not for continuous mass production of food.
28. Be careful if hot liquids are poured into the blender container as they can be ejected out of the appliance due to sudden steaming.
29. When blending hot liquids, remove filler cap or dosing cup of the two-piece lid, and close any lid openings along the edge intended for pouring. Hot liquids may push lid off jar during blending. To prevent possible burns: Do not fill blender jar beyond the 32 ounce (.9 L) level. With the protection of an oven mitt or thick towel, place one hand on top of lid. Keep exposed skin away from lid. Start blending at lowest speed.

SAVE THESE INSTRUCTIONS

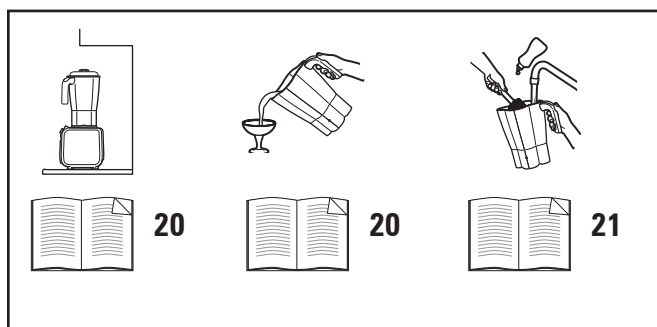
For HBH550R

WARNING: Light indicates ready to operate. Do not touch blades.

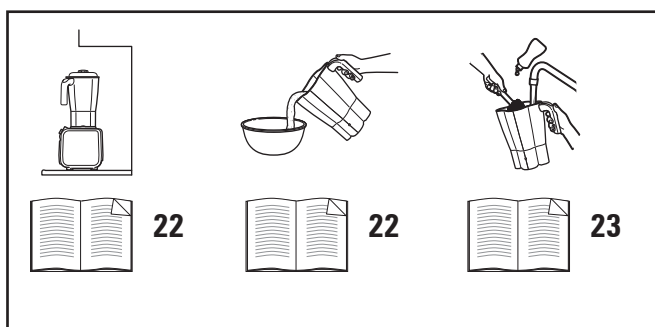
For HBH550R



For HBH650R



For HBF600R



Safety Alert Symbols

The following safety alert symbols are used throughout this manual to alert you to the safety hazards described below.

Your safety and the safety of others is very important.

We have provided many important safety messages in this manual and on your appliance. Always read and obey all safety messages.



This is the safety alert symbol. It is used to alert you to potential physical injury hazards. Obey all safety messages that follow this symbol to avoid possible injury or death.

All safety messages will be preceded by the safety alert symbol and the word "WARNING" or "CAUTION." These words mean:

⚠ WARNING

WARNING indicates a hazardous situation which, if not avoided, could result in death or serious injury.

⚠ CAUTION

CAUTION indicates a hazardous situation which, if not avoided, could result in minor or moderate injury.

All safety messages will identify the hazard, tell you how to reduce the chance of injury, and tell you what can happen if the instructions are not followed.

⚠ WARNING



Electrical Shock Hazard

Disconnect power before cleaning blender base.

Failure to follow these instructions can result in death or electrical shock.

⚠ WARNING



Electrical Shock Hazard

Plug into a grounded outlet.

Do not remove ground.

Do not use an adapter.

Do not use an extension cord.

Failure to follow these instructions can result in death, fire, or electrical shock.

⚠ WARNING



Cut Hazard

Always place cover on container when blending.

Do not put hands, spoons, or other utensils in container when blending.

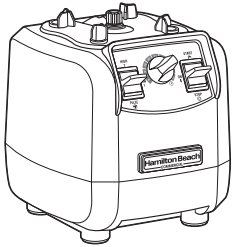
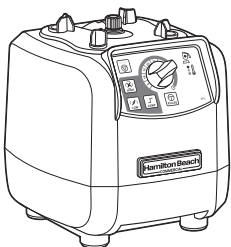

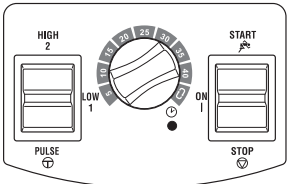
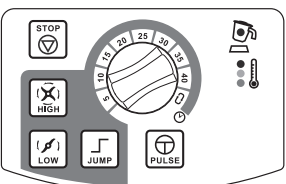
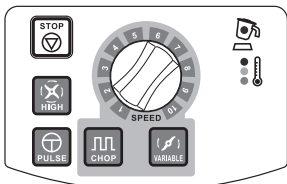



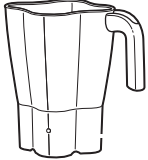




Failure to follow these instructions can result in broken bones, cuts, or other injuries.

Sanitizing

Sanitize using 1 Tablespoon (15 mL) of household bleach per 1 gallon (3.8 liters) of clean, cool water (60°F/16°C), mixed according to the instructions on the bleach.

1. Fill jar with sanitizing solution, replace lid and filler cap or dosing cup and run on LOW speed for 2 minutes. Empty jar.
2. Wipe exterior with soft cloth dampened with sanitizing solution.
3. Immerse lid and filler cap or dosing cup in sanitizing solution for 2 minutes.
4. Place empty jar on base and run on HIGH speed for 2 seconds to remove any moisture from the cutter assembly.
5. **When ready to use**, rinse with clean water.

Parts and Features

Blender Base	 HBH550R Series	 HBH650R Series	 HBF600R Series
Control Panel			
Operation	Timer Control HIGH/LOW/PULSE START/STOP	STOP/HIGH/LOW JUMP/PULSE	STOP/HIGH/PULSE CHOP/VARIABLE
 Removable Filler Cap	X	X	
 Removable Lid	X	X	X
 Removable Dosing Cup			X
 64 oz. Clear Jar	X	X	X
 Removable Jar Pad	X	X	X
 ON (I)/OFF (O) POWER Switch (bottom of Blender)	X	X	X
 Motor Temperature Gauge		X	X
 Jar Pad Sensor	X	X	X

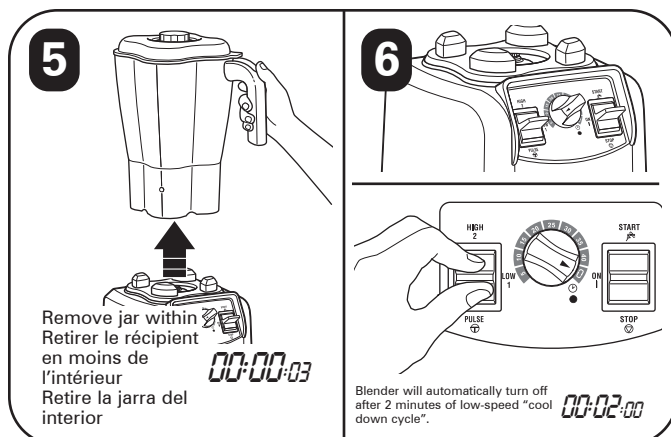
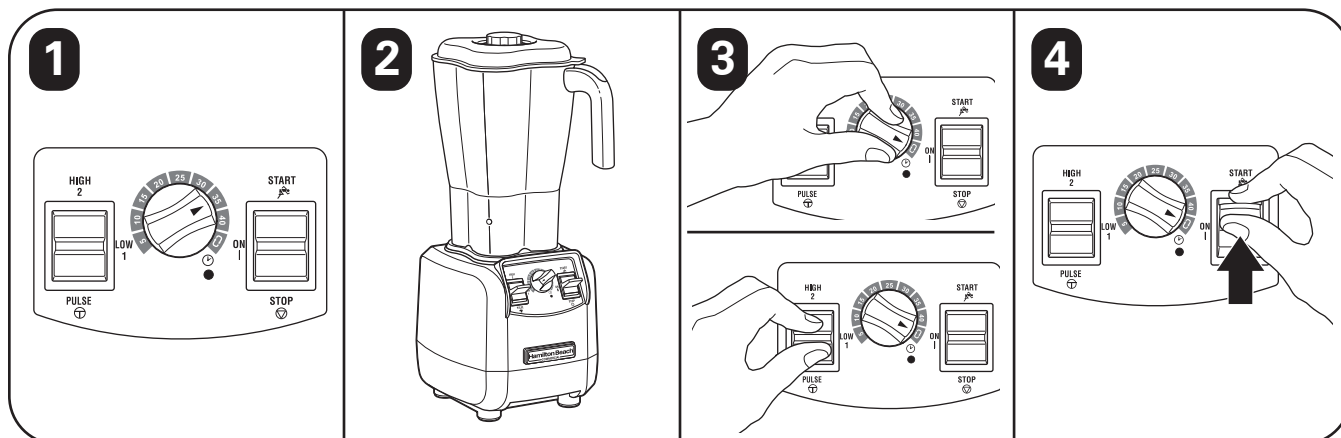
Maintenance

Inspect the Blender and its various parts and replace as follows:

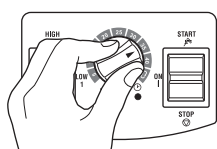
Daily	Unplug the Blender and remove Jar from Blender Base, then inspect Jar and cutter assembly for wear, nicks, and broken or loose blades. Replace if necessary. If blades are loose, discontinue use immediately and replace blades. Do not attempt to repair or tighten cutter assembly. See "Technical Services."
Weekly	Unplug the Blender, then inspect power cord insulation and power plug for cracks. Refer to "Technical Services" for repair or replacement.
Quarterly	Replace Jar and cutter assembly as needed if inspection finds wear, nicks, or broken or loose blades. See "Technical Services."

Troubleshooting

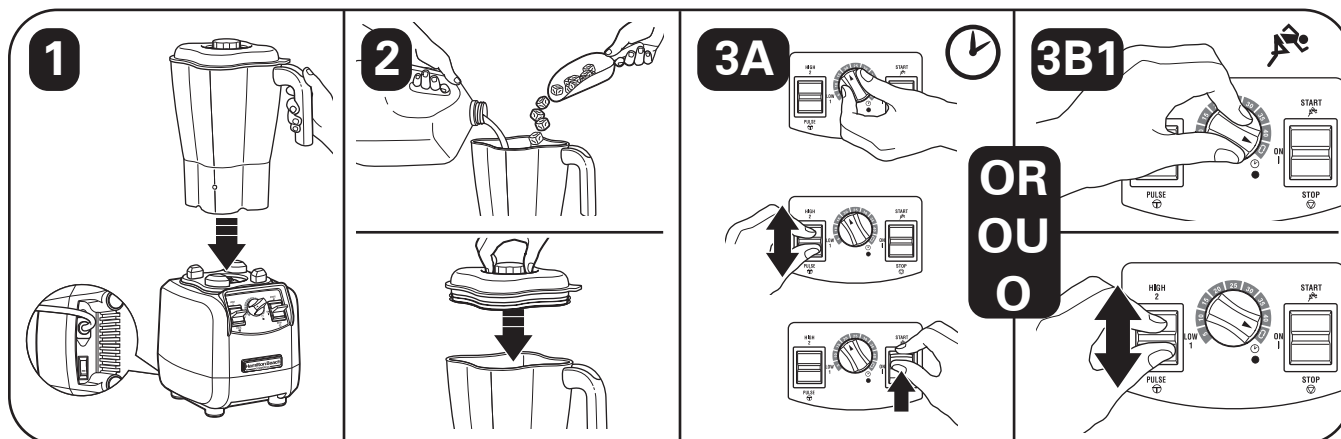
Problem	Solution
Blender fails to start, or stops while it is running and cannot be restarted.	<ul style="list-style-type: none">• Check to see if unit is securely plugged into an electrical outlet.• Check to see if integrated circuit breaker has tripped and reset it, if needed.• Check to see if fuse for electrical outlet has blown or if a circuit breaker has tripped.• If motor stops during operation due to overheating, unplug and allow the unit to cool down for 15 minutes. Plug unit back in after 15 minutes to resume normal operation.
Ingredients will not mix properly.	<ul style="list-style-type: none">• Check to see if enough liquid has been added to the ingredients. Mixture should be fluid and free-running at all times.• Solid pieces are too large. Pieces should not exceed 1" cubes.• Jar is too full. Do not fill past highest graduation marking.• Cutter unit blades are not sharp or are damaged. Inspect Jar and cutter assembly daily. Replace Jar and cutter assembly as needed if inspection finds wear, nicks, or broken or loose blades. See "Technical Services."• Check to see if cutter assembly is installed properly.• Select speed to create a fluid blend.

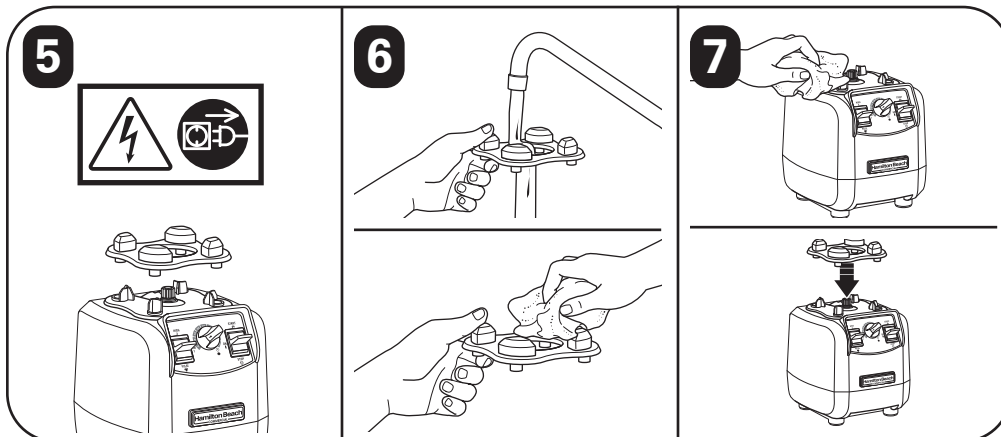
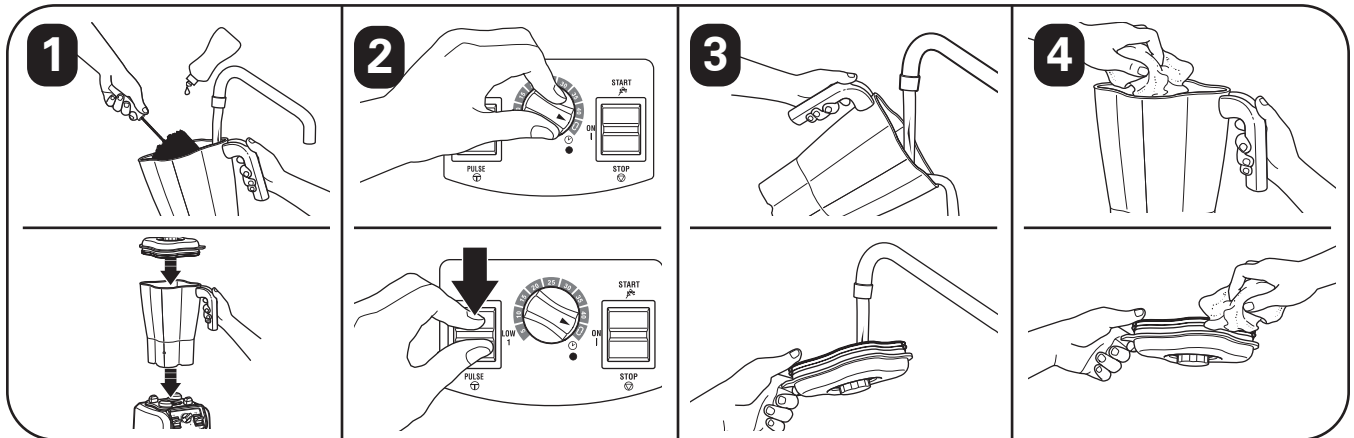
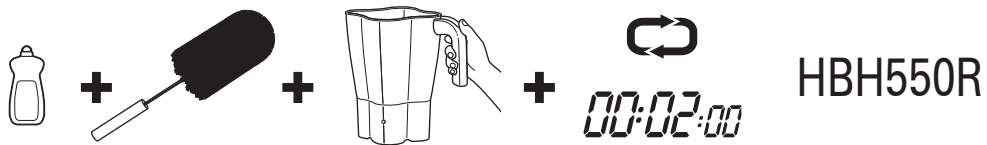
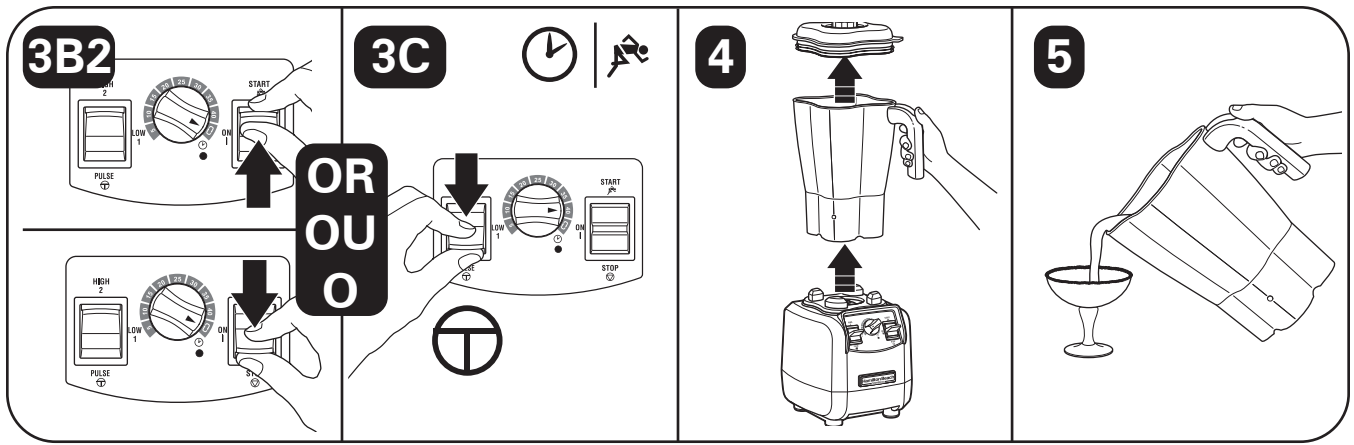


Le mélangeur s'éteindra automatiquement après un « cycle de refroidissement » à basse vitesse de 2 minutes.
La licuadora se apagará automáticamente después de un "ciclo de enfriamiento" de baja velocidad de 2 minutos.



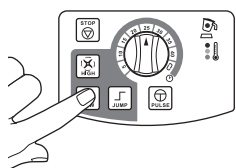
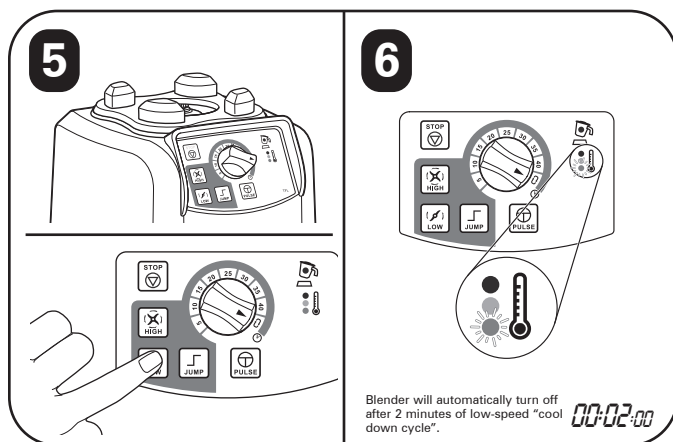
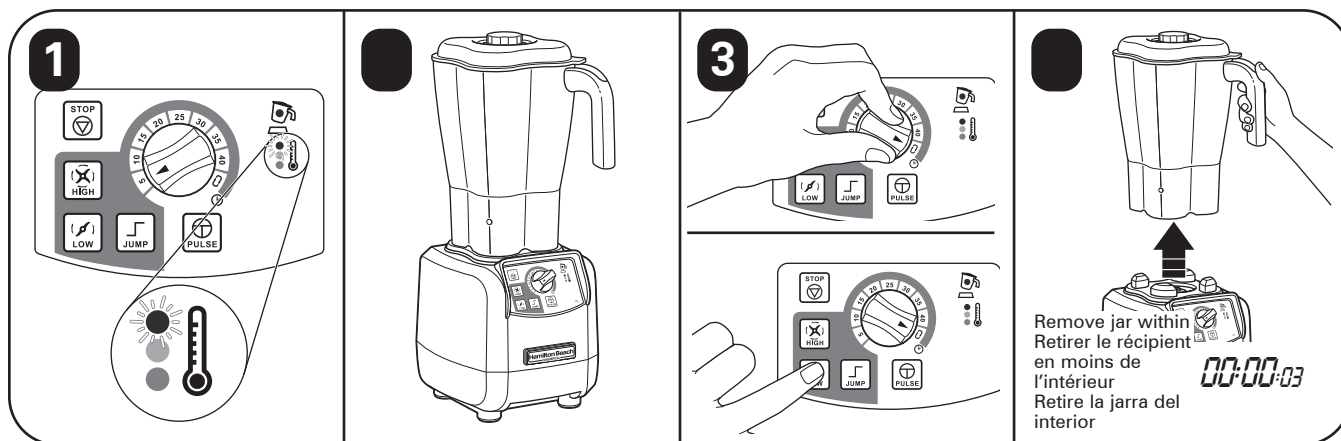
HBH550R



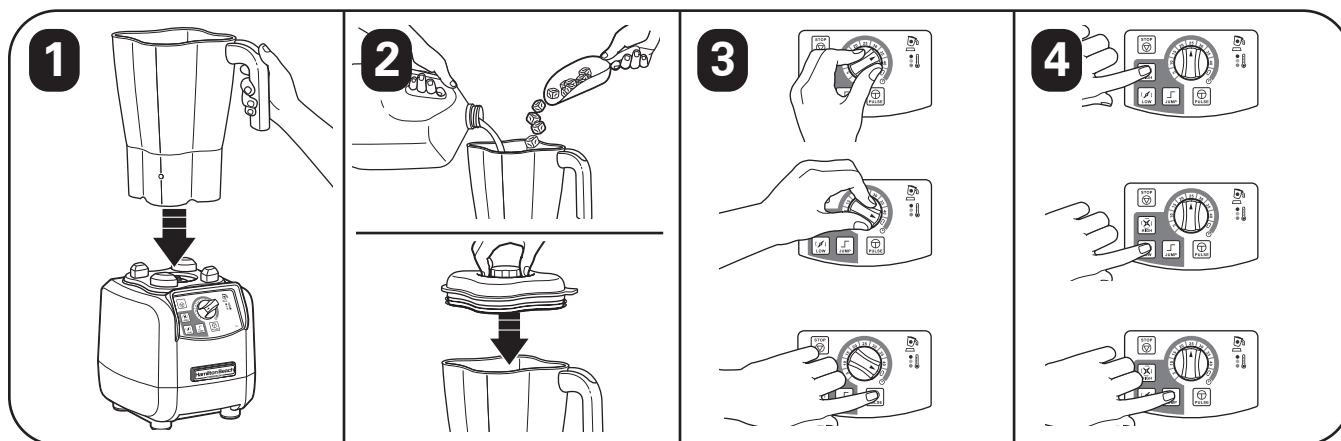
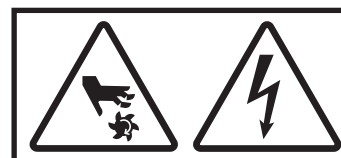


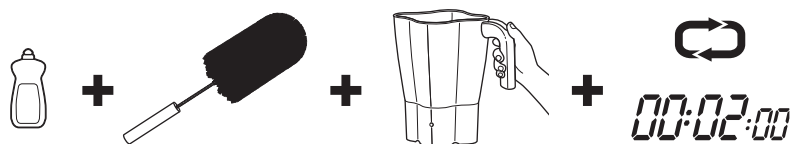
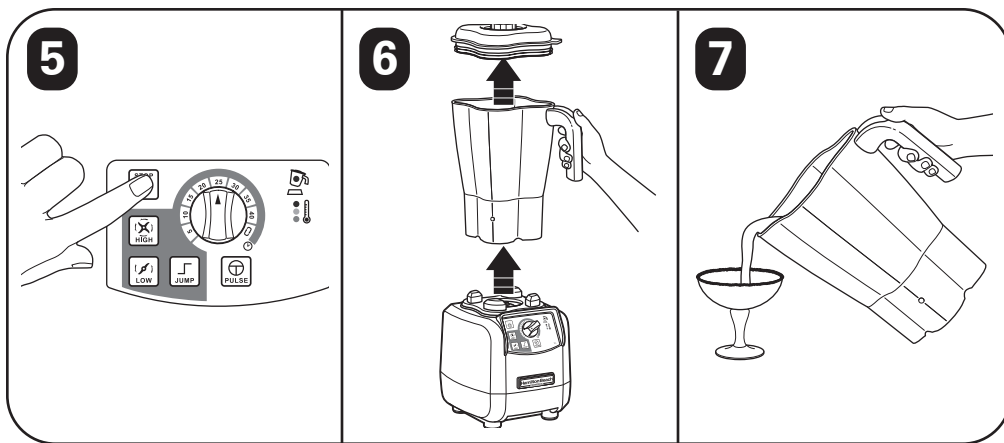
Thermal Overload Protection

HBH650R

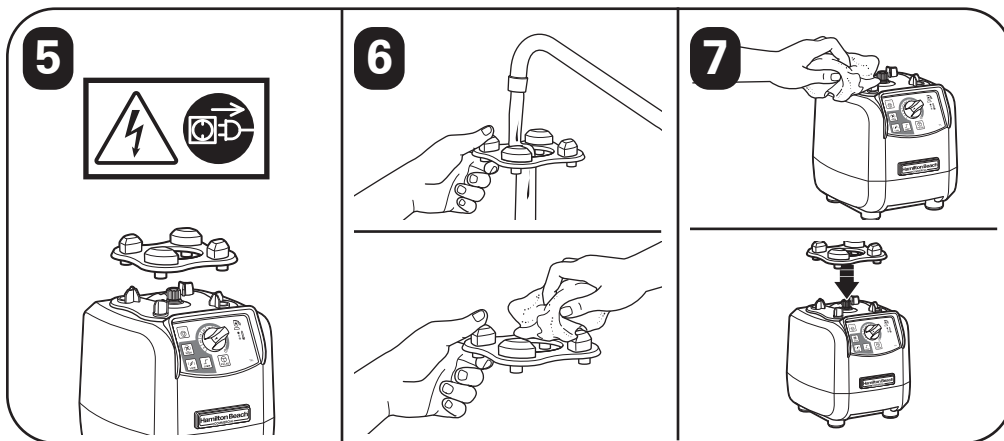
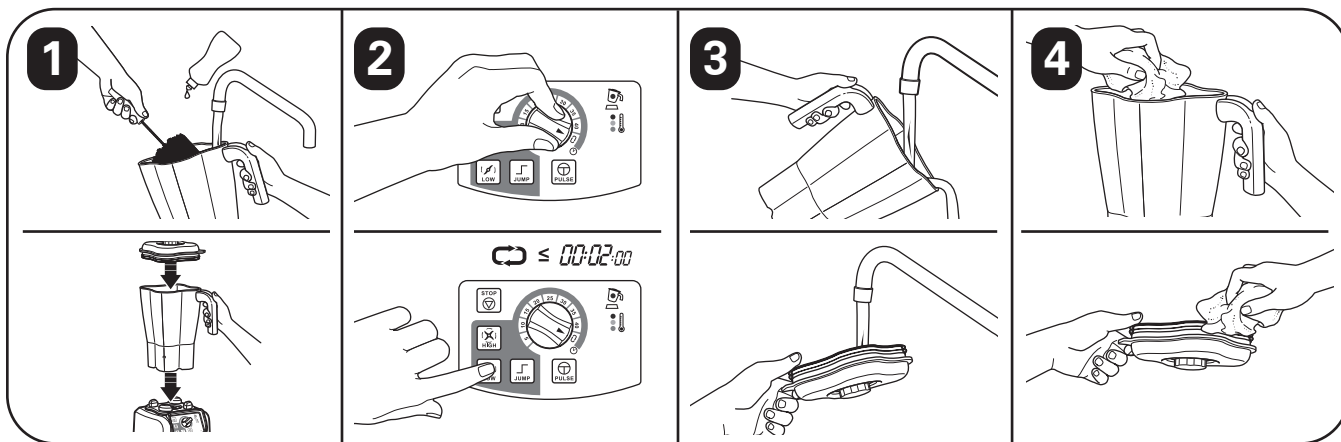


HBH650R





HBH650R



Thermal Overload Protection

HBF600R



1

2

3

4

Remove jar within
Retirer le récipient
en moins de
l'intérieur
Retire la jarra del
interior

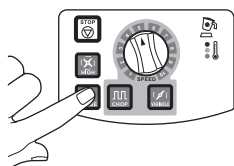
5

6

Blender will automatically turn off
after 2 minutes of low-speed "cool
down cycle".

Le mélangeur s'éteindra automatiquement après un
« cycle de refroidissement » à basse vitesse de 2 minutes.

La licuadora se apagará automáticamente después de un
"ciclo de enfriamiento" de baja velocidad de 2 minutos.



HBF600R

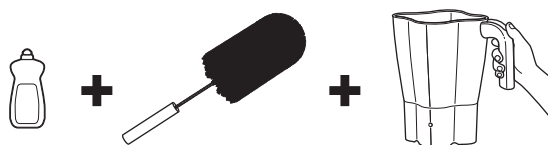
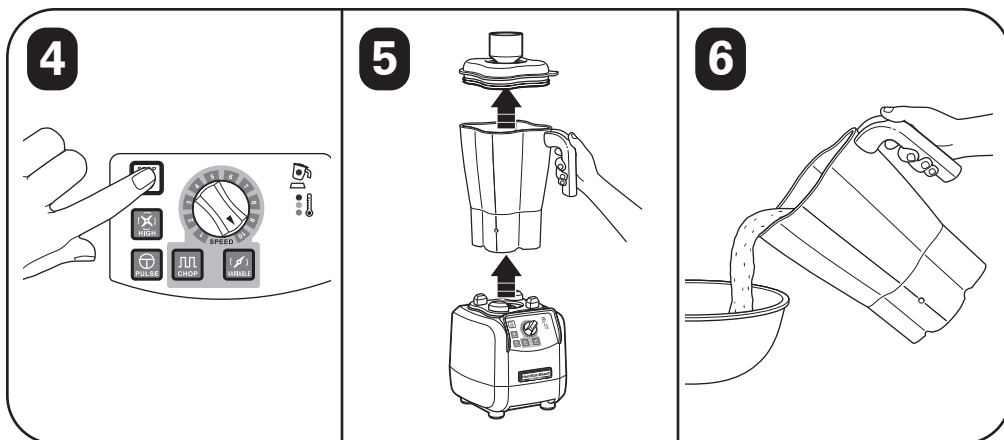


1

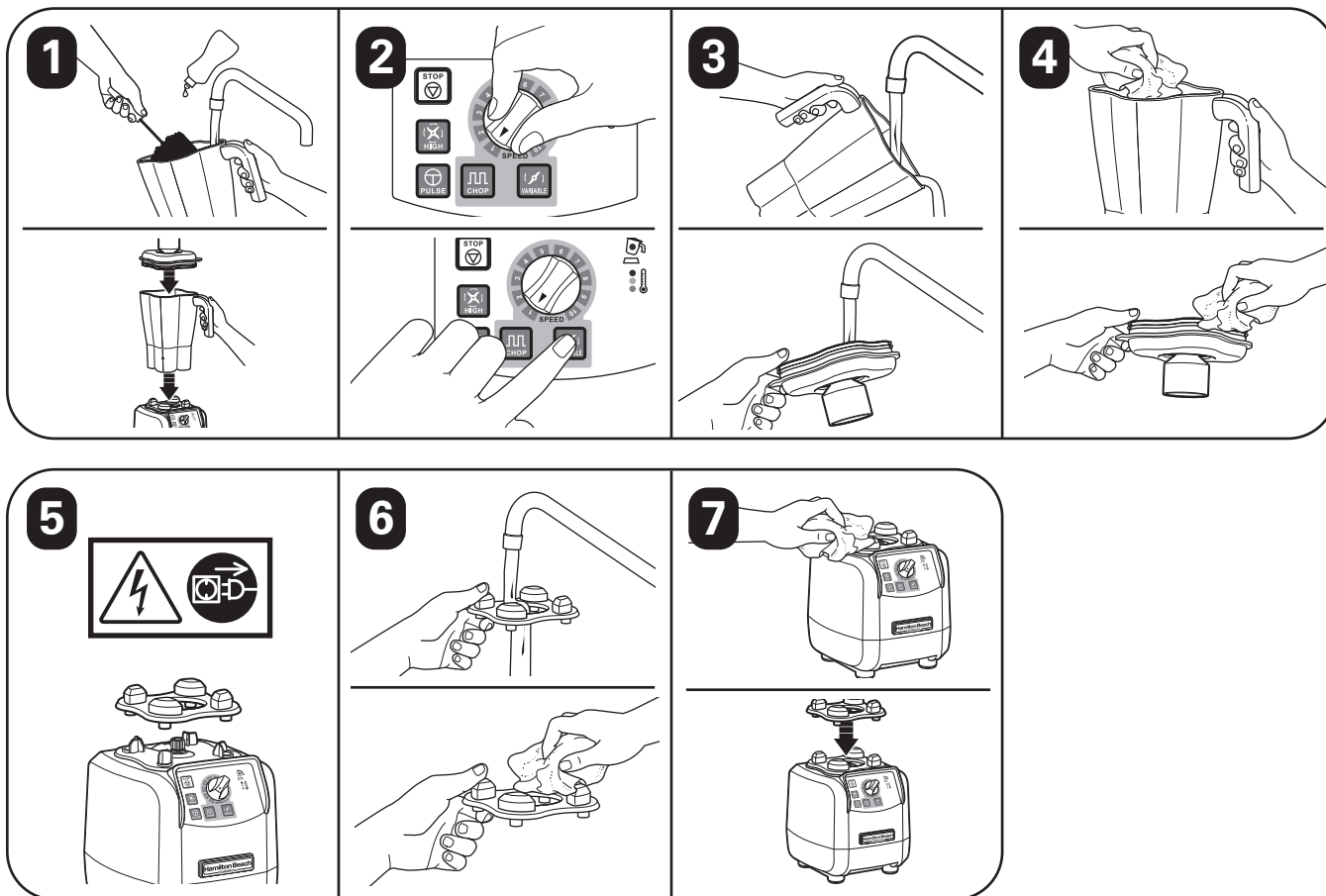
2

3

PULSE BATTRE LATIR				
PUREE PURÉE PURÉ				
CHOP COUPER PICAR				
BLEND MÉLNAGER MEZCLAR				



HBF600R



Metos Oy Ab

Ahjonkaarre, 04220 Kerava

Puh. 0204 3913

metos.finland@metos.fi

www.metos.fi

metos
kitchen intelligence®