

metos

BLENDER HAMILTON BEACH

HBH755R



Installation and Operation Manual

Blender Safety

IMPORTANT: This operation manual should be reviewed with all equipment operators as part of your operator training program. Keep manual available in the work area for users' easy reference.

IMPORTANT SAFETY INSTRUCTIONS




WARNING – When using electrical appliances, basic safety precautions should always be followed to reduce the risk of fire, electric shock, and/or injury to persons, including the following:

1. Read all instructions.
2. This appliance is not intended for use by persons with reduced physical, sensory, or mental capabilities, or lack of experience and knowledge, unless they are closely supervised and instructed concerning use of the appliance by a person responsible for their safety.
3. This appliance shall not be used by children. Keep the appliance and its cord out of reach of children.
4. Close supervision is necessary when any appliance is used near children. Children should be supervised to ensure that they do not play with the appliance.
5. Plug into a grounded 3-prong electrical socket.
6. Do not remove ground prong.
7. Do not use an adapter.
8. Do not use an extension cord.
9. To protect against risk of electrical shock, do not put cord, plug, base, or motor in water or other liquid.
10. Do not clean appliance with a high-pressure spray gun or steamer.
11. Turn the appliance OFF (●), then unplug from outlet when not in use, before putting on or taking off parts, and before cleaning. To unplug, grasp the plug and pull from the outlet. Never pull from the power cord.
12. Avoid contact with moving parts.
13. Do not operate any appliance with a damaged supply cord or plug, or after the appliance malfunctions or has been dropped or damaged in any manner. Supply cord replacement and repairs must be conducted by the manufacturer, its service agent, or similarly qualified persons in order to avoid a hazard. Call the provided customer service number for information on examination, repair, or adjustment.
14. Do not use outdoors.
15. Do not let cord hang over edge of table or counter or touch hot surfaces, including stove.
16. Keep hands and utensils out of the jar and away from the cutting blade, while blending or chopping food, to reduce the risk of severe personal injury and/or damage to the blender or available attachments (attachments may not be provided with blender). A rubber spatula may be used but must be used only when blender is not running.
17. To prevent damage to blender, jar, or cutter assembly, DO NOT move or shake blender while in operation. If blending action stops during operation, turn blender OFF (●), remove jar from base, remove jar lid, and use a thin rubber spatula to push mixture toward cutters.
18. Blades are sharp; handle carefully—especially when emptying or cleaning the blender jar.
19. Inspect jar and cutter assembly daily. Do not use broken, chipped or cracked jar. Check cutter for wear, nicks, or broken blades. Do not use broken or cracked cutting blades.
20. If cutter assembly blades are loose, discontinue use immediately and replace cutter assembly. Do not attempt to repair or tighten cutter assembly.
21. Always operate blender with lid in place.
22. Do not use appliance for other than intended purpose.
23. Do not leave blender unattended while it is operating.
24. Check that the appliance is OFF (●) before plugging cord into wall outlet. To disconnect, turn the control to OFF (●); then remove plug from wall outlet. To unplug, grasp the plug and

pull from the outlet. Never pull from the power cord.

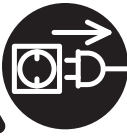
- 25. CAUTION!** In order to avoid a hazard due to inadvertent resetting of the thermal cut-out, this appliance must not be supplied through an external switching device, such as a timer, or connected to a circuit that is regularly switched on and off by the utility.
- 26.** This appliance is intended to be used for commercial applications,

for example in kitchens of restaurants, canteens, hospitals and in commercial enterprises such as bakeries, butcheries, etc., but not for continuous mass production of food.

- 27.**    **WARNING:** Do not operate without lid in place. Always operate blender with lid in place. Remove filler cap only for adding ingredients or to insert the tamper.

SAVE THESE INSTRUCTIONS

WARNING



Electrical Shock Hazard

Disconnect power before cleaning blender base.
Failure to follow these instructions can result in death or electrical shock.

WARNING



Electrical Shock Hazard

Plug into a grounded outlet.
Do not remove ground.
Do not use an adapter.
Do not use an extension cord.
Failure to follow these instructions can result in death, fire, or electrical shock.

WARNING

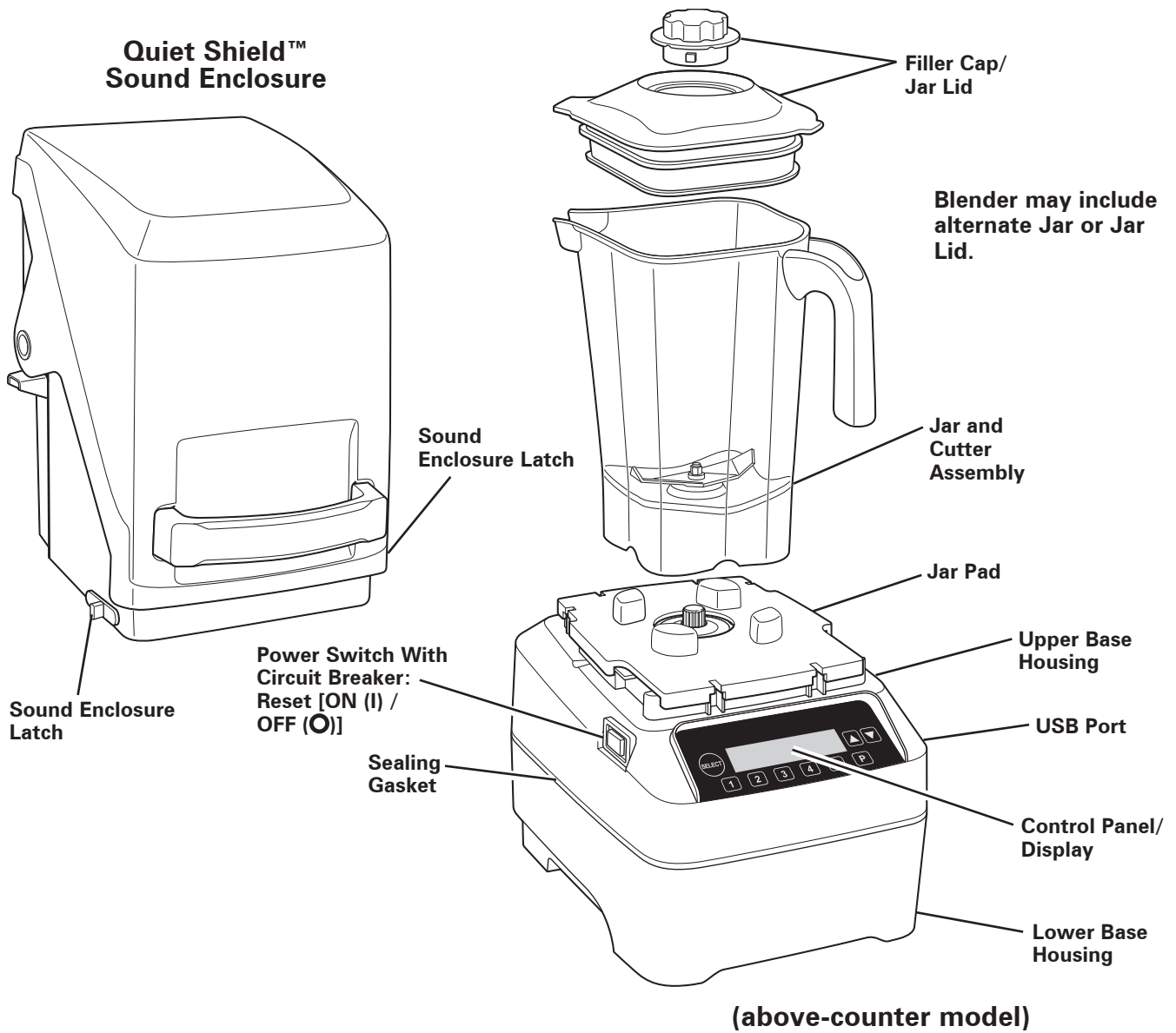


Cut Hazard

The blending blade is sharp.
Always place lid on jar when blending.
Do not put hands, spoons, or other utensils in jar when blending.
Failure to follow these instructions can result in broken bones, cuts, or other injuries.

Parts and Features

The parts and features for the blender are shown on this page. Your blender is designed for blending and mixing beverages.

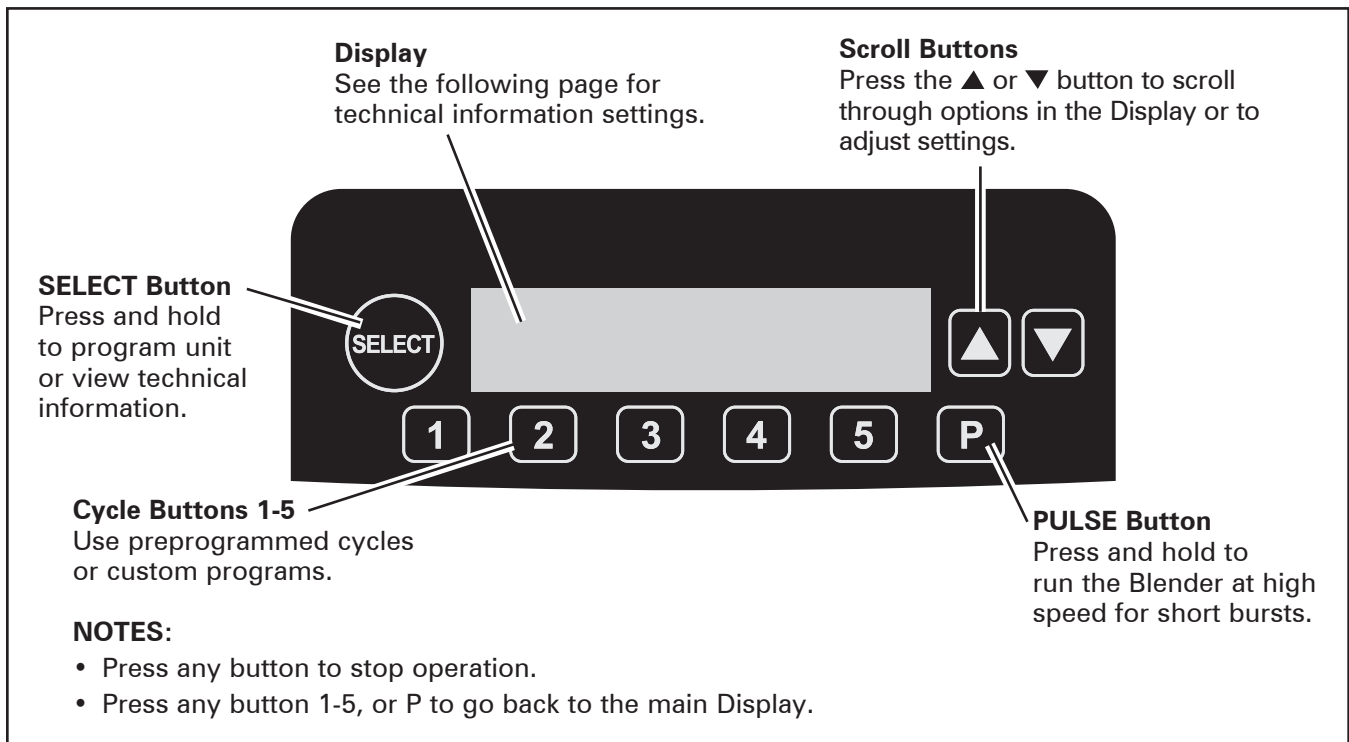


Optional

To Load Custom Programs with USB:

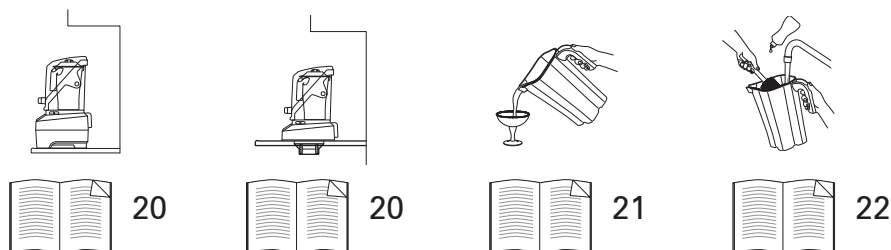
1. Turn OFF (O) and unplug unit.
2. Remove the USB cover.
3. Insert USB.
4. Plug in unit and turn ON (Reset) (I).
5. Display will show a confirmation message.
6. Turn OFF (O) and unplug unit.
7. Remove USB and reinstall the USB cover.

Control Panel



Blender Operation – Quick Start Guide

1. Read Important Safety Instructions and Warning Symbol Explanations before use.
2. Place the Blender on a dry, level surface.
3. Make sure the Power Switch is OFF (●). Plug the Blender into a grounded 3-prong electrical outlet.
4. Place the Jar on the Base with ingredients and Jar Lid in place. Close the Quiet Shield Door.
5. Turn the Blender on by pressing the Power Switch marked Reset [ON (I)] / OFF (●). The red LED switch indicates that power is ON (I).
6. Select the desired function.
7. Use any button to stop operation.



Sanitizing



Sanitize using one tablespoon (15 mL) of household bleach per one gallon (3.8 L) of clean, cool water (60°F/16°C), mixed according to the instructions on the bleach.

1. Fill Jar with sanitizing solution, replace Jar Lid and Filler Cap and run on a low speed for two minutes. Empty Jar.
2. Wipe exterior with soft cloth dampened with sanitizing solution.
3. Immerse Jar Lid and Filler Cap in sanitizing solution for two minutes.
4. Place empty Jar on Base and run on a high speed for two seconds to remove any moisture from the Cutter Assembly.
5. **When ready to use**, rinse with clean water.

Programming the Blender

Changing Programs

PROGRAM UNIT
SELECT OR SCROLL

Hold  to program Blender. Press  to continue.


STANDARD
Y-SELECT OR SCROLL

There are 8 preset programs. Scroll to view the programs. Hold button 1–5 to assign a program, or continue to scroll for additional programs.

HIGH SPEED
Y-SELECT OR SCROLL

LOW SPEED
Y-SELECT OR SCROLL

JUMP SPEED
Y-SELECT OR SCROLL

Press  and scroll to select cycle time. Hold button 1-5 to assign a program.


CUSTOM



Custom programs uploaded from USB.

NOTE: Saving a new cycle to a location will overwrite any existing cycle in that location.

Technical Information Settings

INFORMATION
SELECT OR SCROLL

Press  to enter INFORMATION menu and scroll up ▲ to view below options.

For all options below, press  to view information or scroll for next option. Press  a second time during any option to exit program menu.

CYCLE COUNTER

Displays number of cycles run.

CUSTOM CYCLE COUNTER

Displays number of custom cycles run.

CLEAR CYCLE COUNTER

Use to only clear custom cycle counter.

CUSTOMER SERV. INFO

Provides contact numbers for Technical Service.

DISPLAY BACKLIGHT

Scroll to enable or disable option for constant display of backlight.

QUIET SHIELD SENSOR

Display shows QUIET SHIELD SENSOR. If disabled, a two-step start will be enabled.

RUN COOL DOWN CYCLE

If Blender motor overheats, this message will be displayed to prompt you to run a cool-down cycle.

SET FACTORY
DEFAULTS

Use to set all programs to factory defaults.

SOFTWARE VERSION

Displays software version.

CYCLE VERSION

Displays cycle software version.

EXPORT DIAGNOSTICS

Use USB to download diagnostic information.

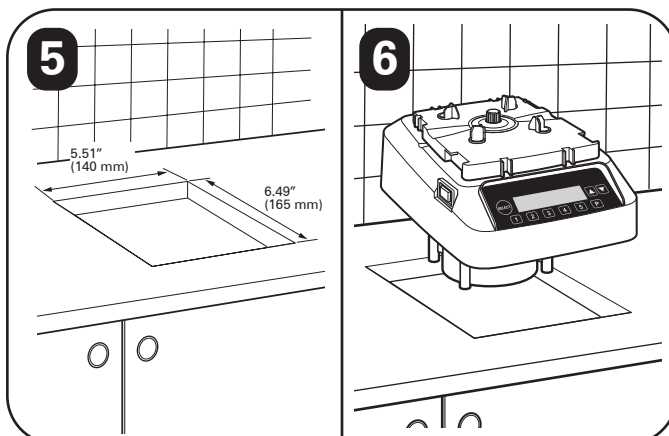
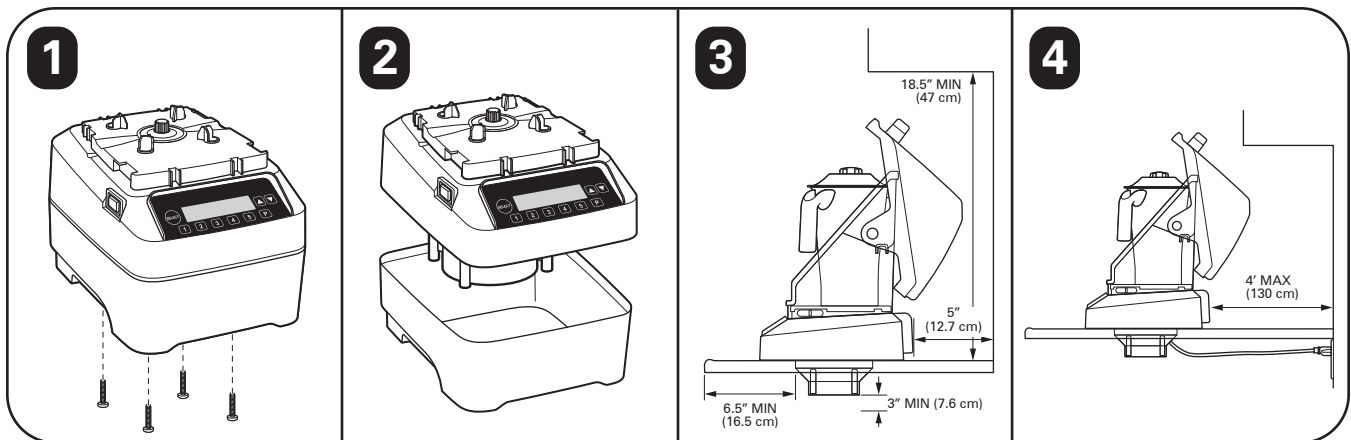
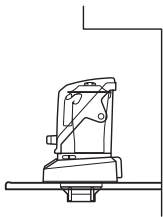
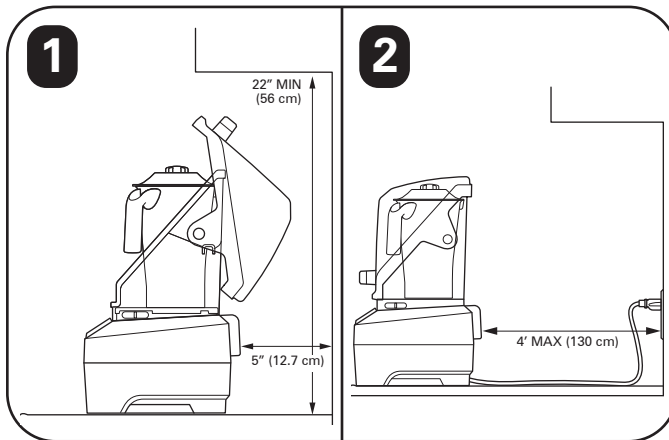
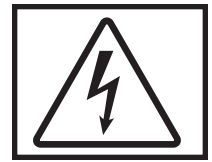
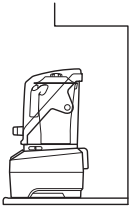
Troubleshooting Guide

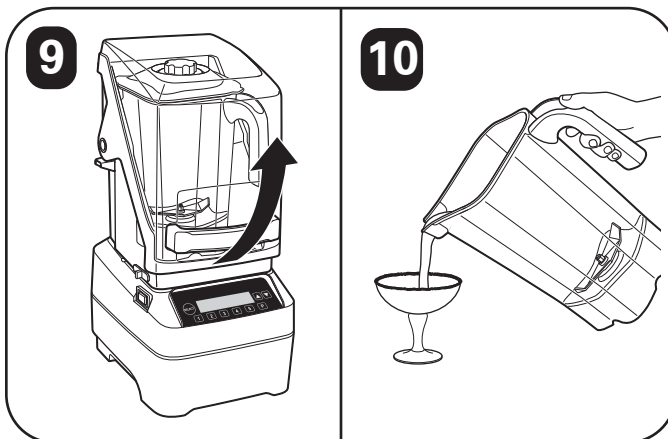
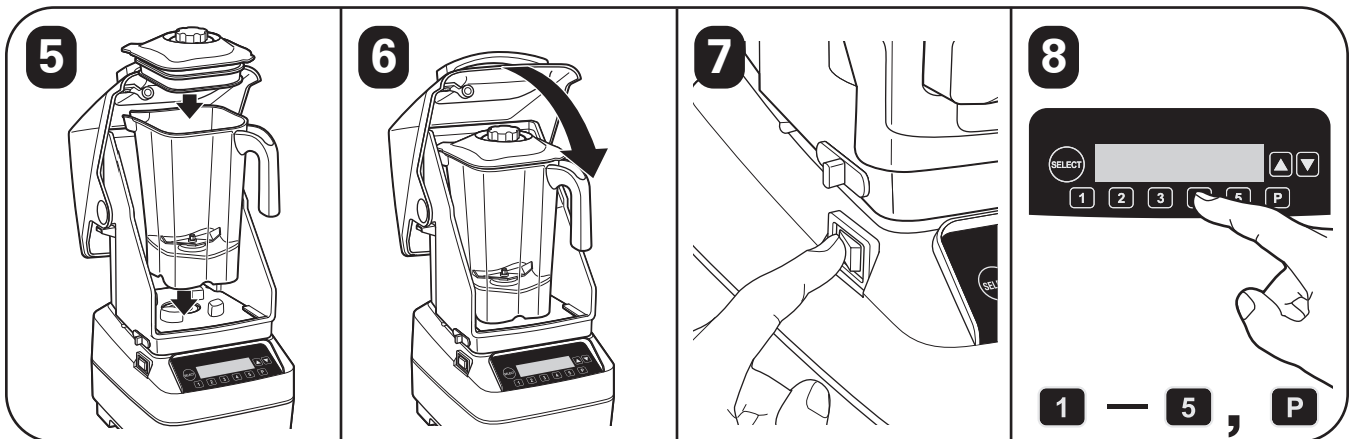
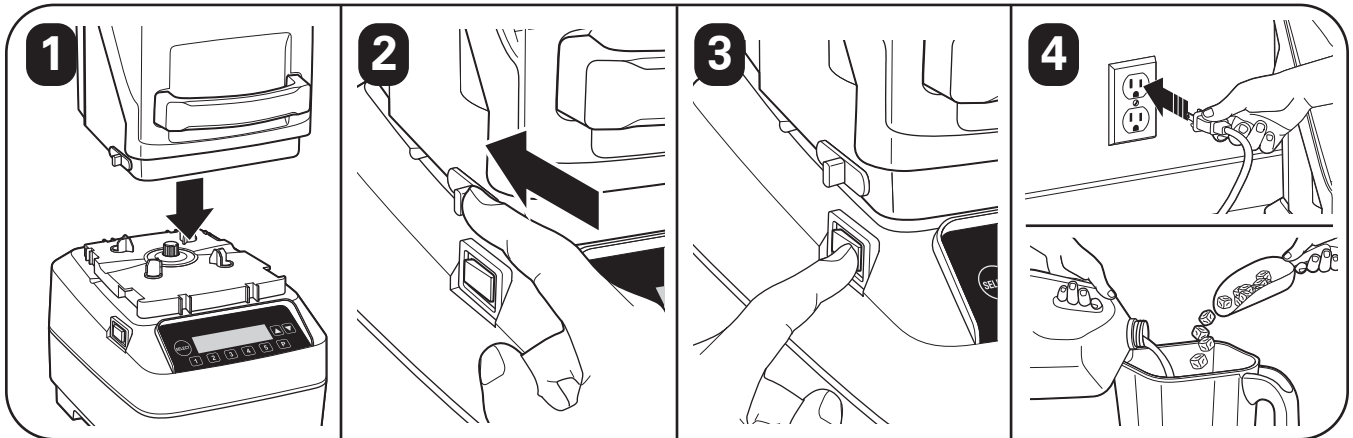
Problem	Solution
Blender fails to start, or stops while it is running and display is blank.	<ul style="list-style-type: none"> • Make sure that the Power Switch is in the Reset [ON (I)] position and is illuminated red. • Check to see if Blender is securely plugged into an electrical outlet of the proper voltage and frequency. • Check to see if the fuse for the electrical outlet has blown or if the Power Switch has tripped. • This Blender is equipped with motor overload protection. If the motor stops during operation due to overheating, unplug and allow the Blender to cool down for 15 minutes. Plug Blender back in after 15 minutes to resume normal operation.
Blender fails to start, or stops while it is running; message appears in Display.	<ul style="list-style-type: none"> • Make sure that the Jar is seated properly on the Blender Base. • Blender will not operate unless Jar is properly seated. • Make sure Quiet Shield™ is down and in correct position.
Blender fails to start, or stops while it is running.	<ul style="list-style-type: none"> • Thermal overload protection has been tripped. Attempt to run “cool down cycle.” Follow instructions in Display. • This Blender is equipped with motor overload protection. If the motor stops during operation due to overheating, unplug and allow the Blender to cool down for 15 minutes. Plug Blender back in after 15 minutes to resume normal operation.
Blender does not respond to button commands or error message appears in Display.	<ul style="list-style-type: none"> • Turn the power off and back on using the Power Switch to reset the controls. • Turn the power off and back on using the Power Switch. If the error message still appears, the Blender will need to be serviced.
Blender does not respond to button commands or error message appears in Display.	<ul style="list-style-type: none"> • Check to see if enough liquid has been added to the ingredients. Mixture should be fluid and free-running at all times. • Solid pieces are too large. • Jar is too full. Do not fill past highest graduation marking. • Cutter Assembly blades are not sharp or are damaged. Inspect Jar and Cutter Assembly daily. Replace Cutter Assembly at least yearly or sooner if Cutter Assembly appears worn or damaged. • Check to see if Cutter Assembly is installed properly. • Select speed to create a fluid blend.

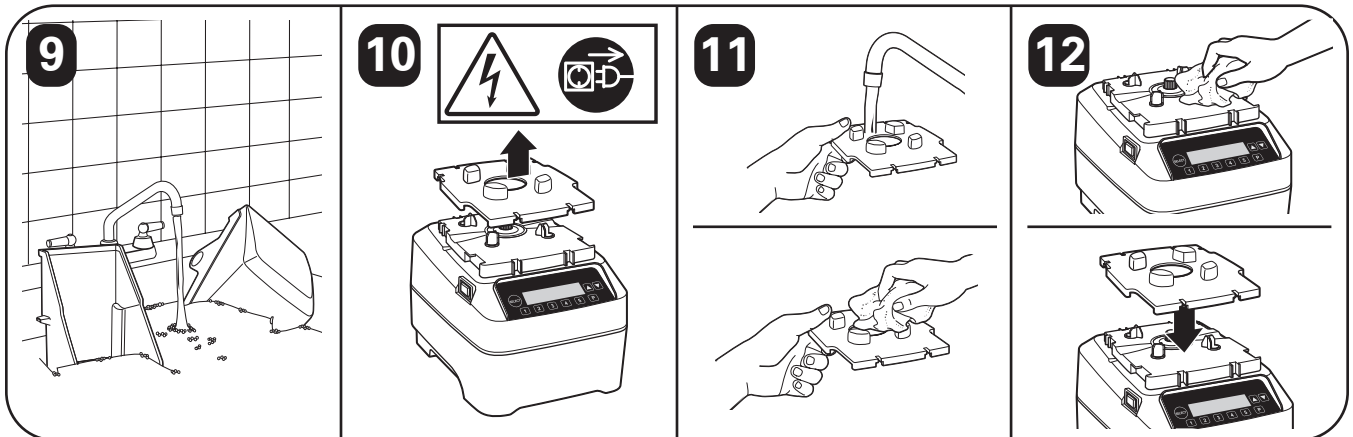
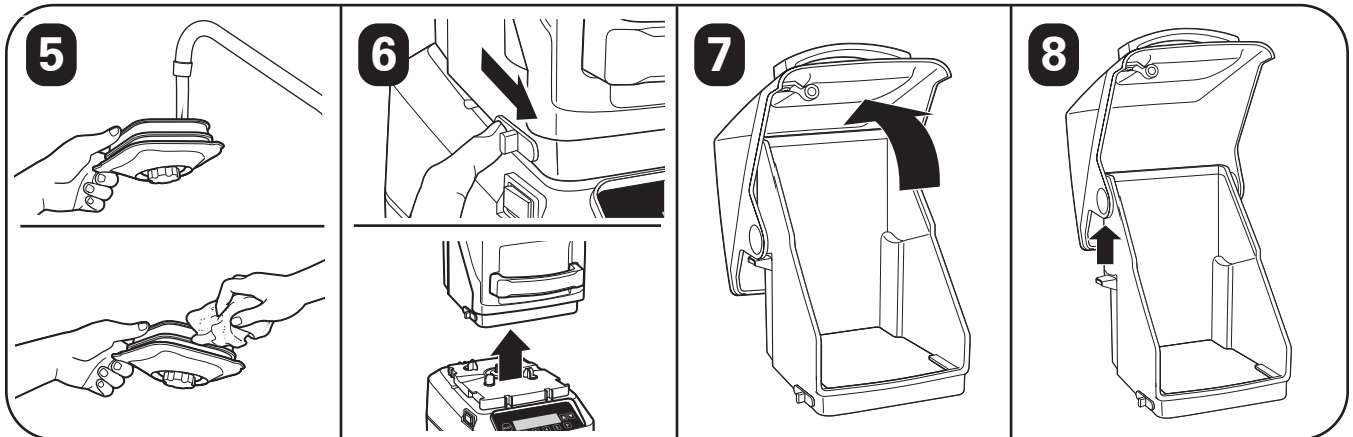
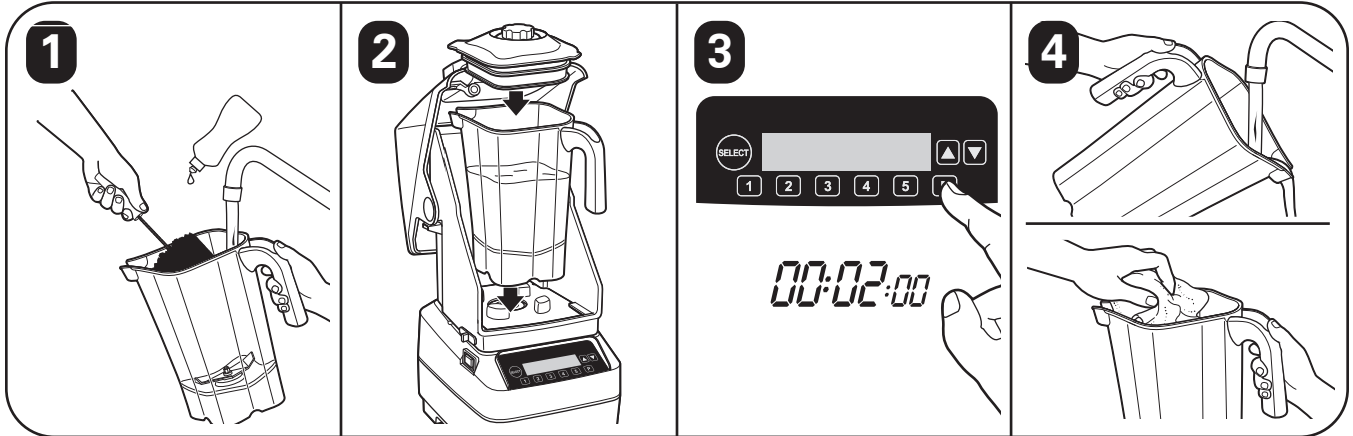
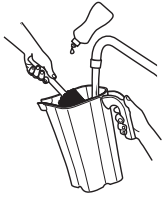
Maintenance

Inspect the Blender and its various parts and replace as follows:

Daily	Unplug the Blender, remove the Jar from the Base, and then inspect the Jar and Cutter Assembly for wear, nicks, and broken or loose blades. If the blades are nicked, broken, or loose, discontinue use immediately and replace the Jar or Cutter Assembly. Do not attempt to repair or tighten Cutter Assembly. See “Technical Services.”
Weekly	Unplug the Blender, and then inspect the power cord insulation and power plug for cracks. Refer to “Technical Services” for repair or replacement. Remove Jar from Blender Base. Inspect the Cutter by rotating the drive end of the Cutter Assembly by hand. It should turn smoothly. If it does not, replace the Jar or Cutter Assembly. See “Technical Services.”







Metos Oy Ab

Ahjonkaarre, 04220 Kerava

Puh. 0204 3913

metos.finland@metos.fi

www.metos.fi

metos
kitchen intelligence®