

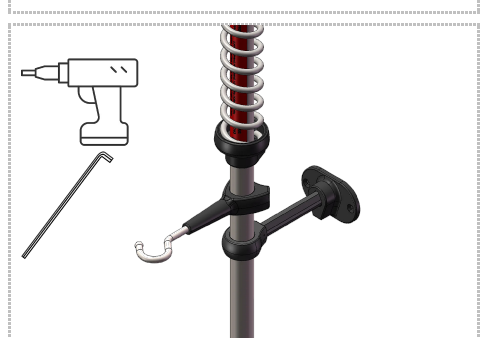
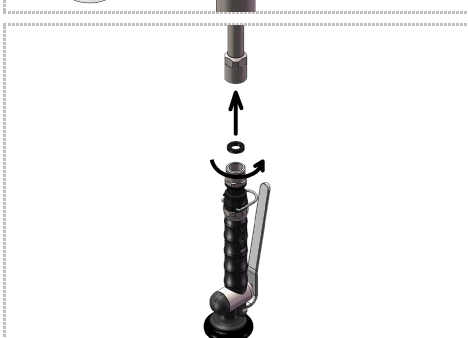
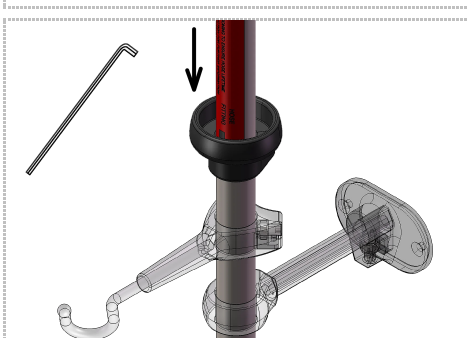
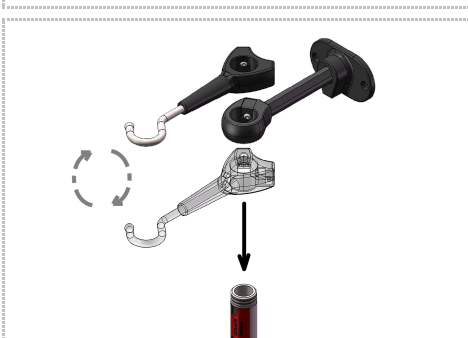
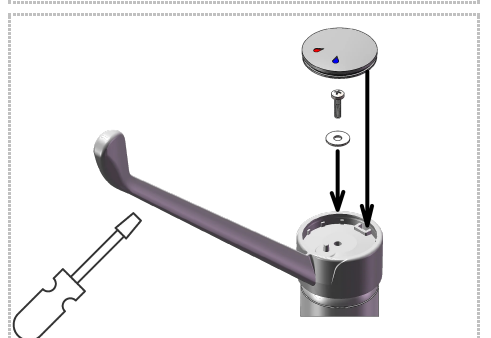
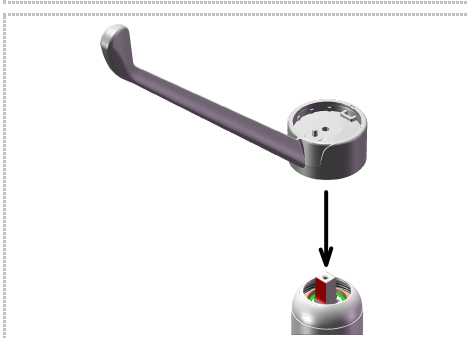
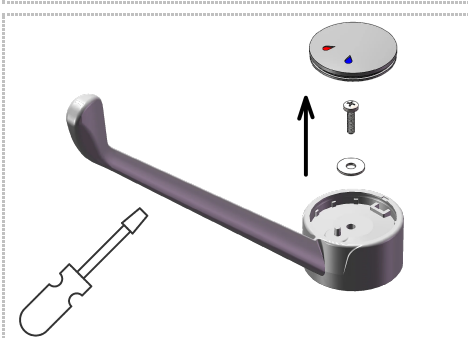
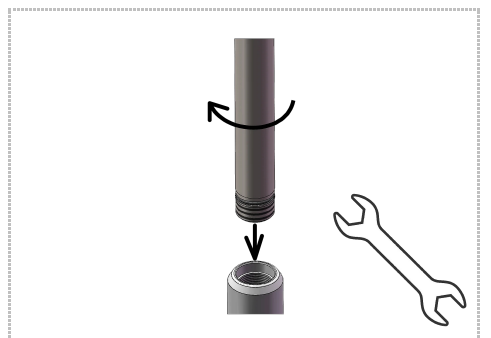
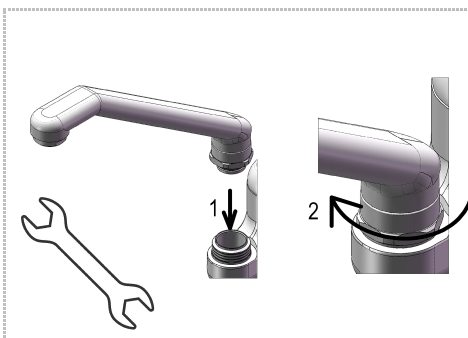
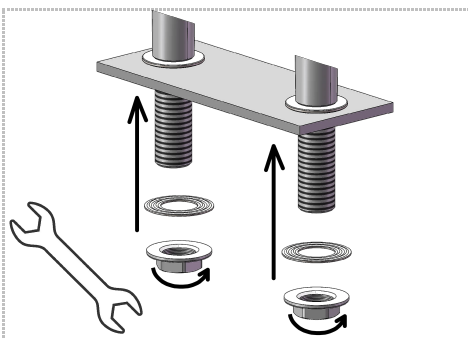
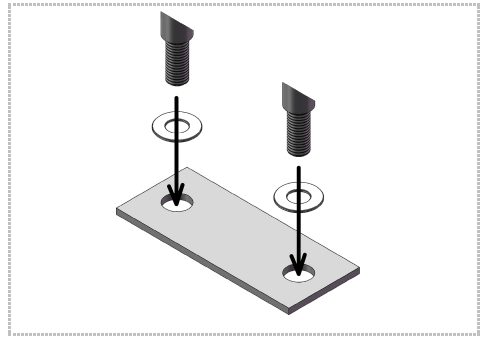
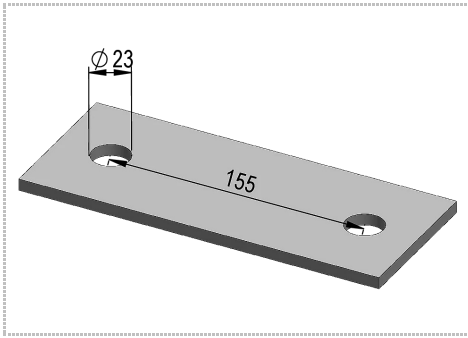
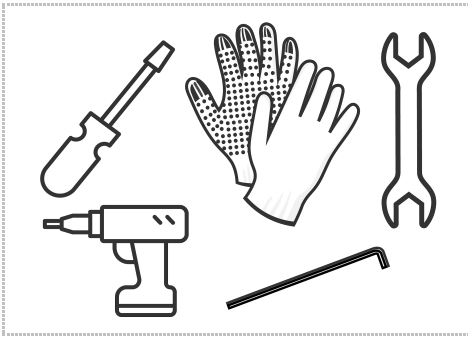
# metos

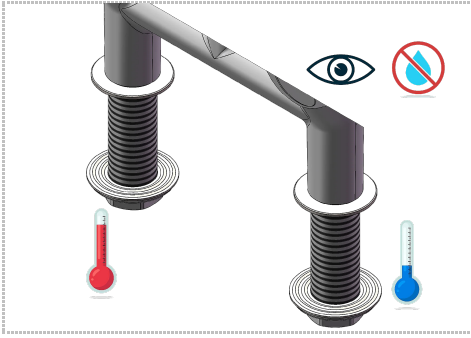
## PRE-WASH SHOWER

2E.4011.FI.11/CS3, 2E.3050.LD.11/C14, 2S.4024.FI/72/C45, 2S.3024.FI.72/C48

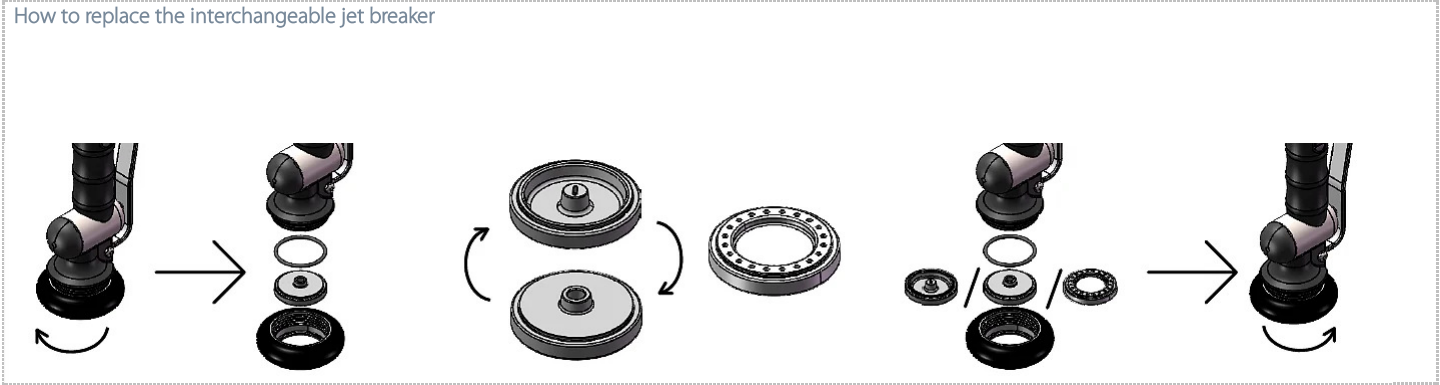


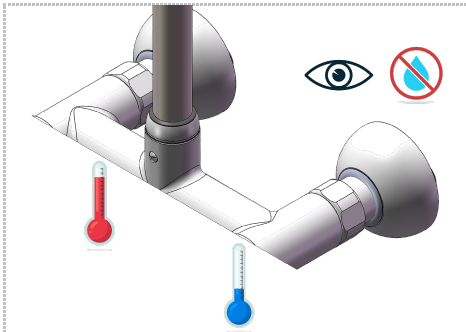
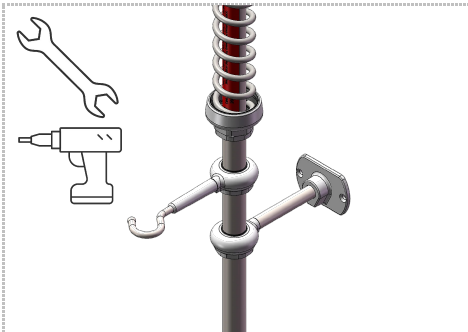
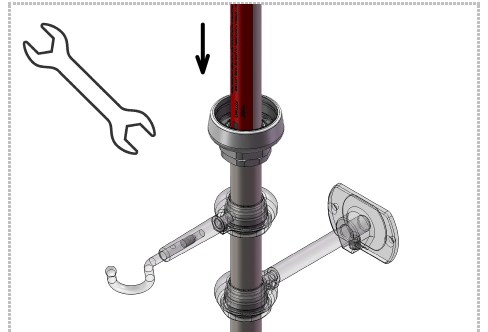
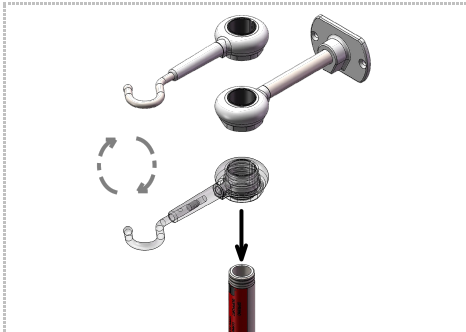
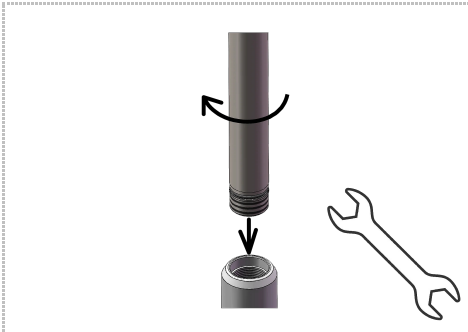
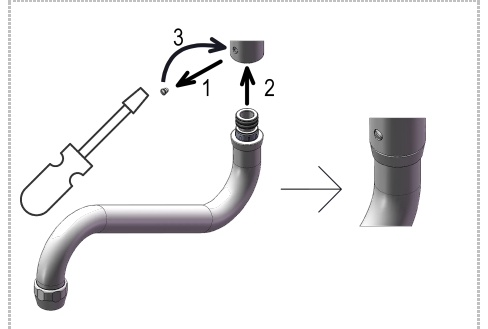
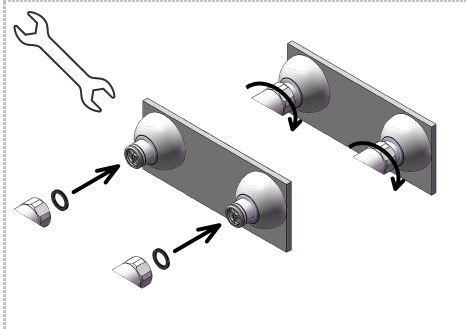
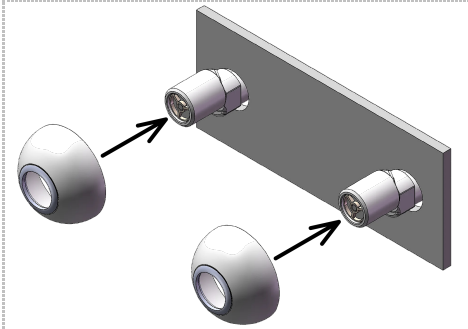
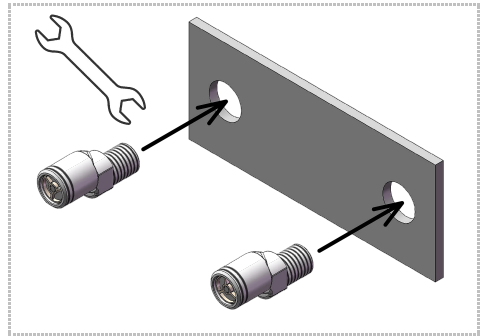
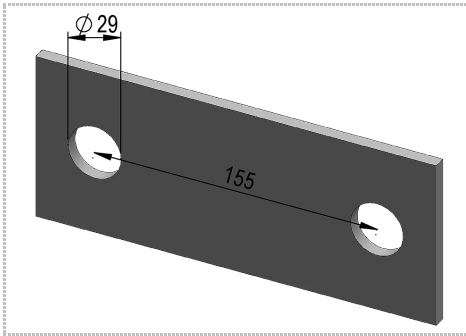
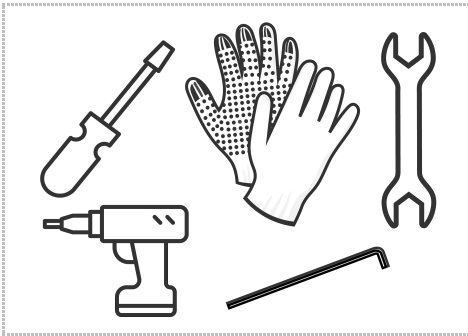
Installation and Operation Manual



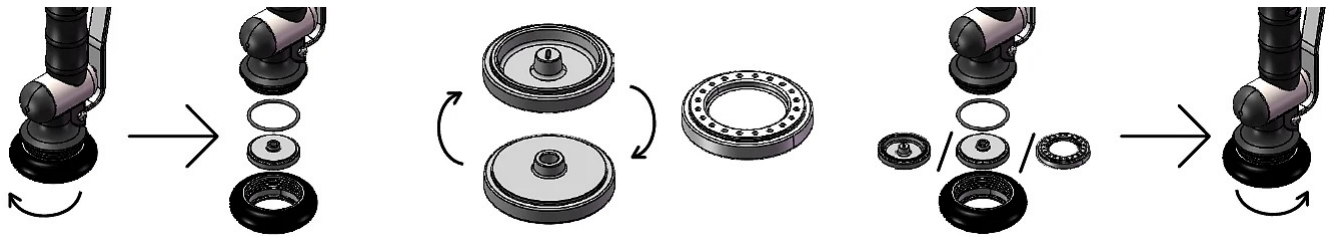


How to replace the interchangeable jet breaker





# How to replace the interchangeable jet breaker



The installer has the responsibility to ensure that the installation is done according to European Norm EN 1717. In case it is not mounted on the main water supply system, it is highly recommended to install a water softener or filter, because limestone deposits and impurities in the water may eventually cause clogging and damage the faucet's compression / ceramic headworks. Test the proper working of the faucet before starting using it. Test the faucet with left handle open (hot water) and right handle open (cold water), both handles open (mixed water), both handles closed (no water flow). If the supply of cold / hot water is reversed, reverse the connection of the inlet flexible hoses.

**Warning:** Flush the pipes well before installation

**Surrounding environment:** Do not store cleaning agents or chemicals in the immediate proximity of fitting and connecting pipes/hoses. Steams' exhalation could damage the fittings and pipes/hoses.

**Checks:** For safety reasons, the connection and shower hoses must be periodically checked for the following points:

- **Tightness:** Wet or dripping hoses must be replaced.
- **Mechanical damage:** Hoses with mechanical damage must be replaced.
- **Corrosion damage:** Pipes/hoses with an oxidized surface must be replaced.

**CAUTION:** Only use original spare parts.

**General indications:** Before the first daily use, or after a prolonged inactivity period, it is strongly recommended to let water flow from the tap for at least 30" to allow the disposal of substances and deposits that may accumulate during the inactivity.

#### Operating parameters:

Minimum operating pressure: > 0.1 Mpa (1bar)

Ideal operating pressure: 0.3 Mpa (3bar)

Maximum operating pressure: 0.5 Mpa (5bar)

Maximum operating temperature:

- Continuous operation 65 °C
- Short-time operation 80 °C

#### USE:

- Do not move swivel nozzle violently to prevent possible damages
- Keep the faucet's surfaces clean, to prevent limestone and corrosive substances fouling (do not use aggressive and / or corrosive detergents)
- Remove the aerator often and keep it clean with suitable solvents and water
- Do not apply any extra weight on the swivel or on the lever
- Faucet is only suitable for use with water, NOT mixed with other substances.

#### CLEANING INSTRUCTIONS

- After use, wipe the faucet with a soft cloth;
- DO NOT clean the faucet surfaces when hot. Faucet surfaces should be cleaned when they are at room temperature;
- Use only non-aggressive detergents. Make sure they do not contain acid or other corrosive substances;
- Avoid contact between detergents and rubber gaskets;
- DO NOT use abrasive cleaning pads;
- After cleaning the faucet with detergents, rinse well the surfaces to remove an traces of chemicals and dry them with a soft cloth.

**CAUTION:** Damage to taps resulting from improper handling is excluded from the guarantee.

#### DISPOSAL INSTRUCTIONS FOR PACKAGING:

Please refer to local guidelines/regulations for disposal of packaging and product/component.

#### WARRANTY TERMS:

For product warranty terms, please refer to the general sales conditions.

**Metos Oy Ab**

Ahjonkaarre, 04220 Kerava

Puh. 0204 3913

[metos.finland@metos.fi](mailto:metos.finland@metos.fi)

[www.metos.fi](http://www.metos.fi)

**metos**  
kitchen intelligence®