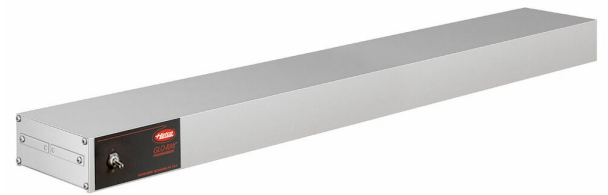


Heat emitter Metos GRAHL-72 with six lamps

Provides even heat distribution. Sturdy aluminium housing

- infrared heating elements
- reinforced wire guard for operator safety
- heavy duty insulation
- shatter resistant (coated) six lamps à 60 W
- one switch for light and heat
- includes cord & plug



Heat emitter Metos GRAHL-72 with six lamps

Product capacity	5 x GN1/1
Item width mm	1829
Item depth mm	229
Item height mm	64
Package volume	0.04
Unit of volume	m3
Package volume	0.04 m3
Package length	190
Package width	30
Package height	7
Package unit of dimension	cm
Package dimensions (LxWxH)	190x30x7 cm
Net weight	10
Net weight	10 kg
Gross weight	11
Package weight	11 kg
Unit of weight	kg
Connection power kW	2.085
Fuse Size A	10
Connection voltage V	230
Number of phases	1NPE
Frequency Hz	50
Type of electrical connection	Semifixed
Electrical conn. height mm	25
Model	Heat emitter