



Food Preparation Machines  
Made in Sweden

# Wiring Diagrams

[halde.com](http://halde.com)



SB-4



VCB-31S



VCB-32



VCM-41/42



VCB-61/62



CC-32S



CC-32



CC-34



RG-50S



RG-50



RG-100



RG-200



RG-250

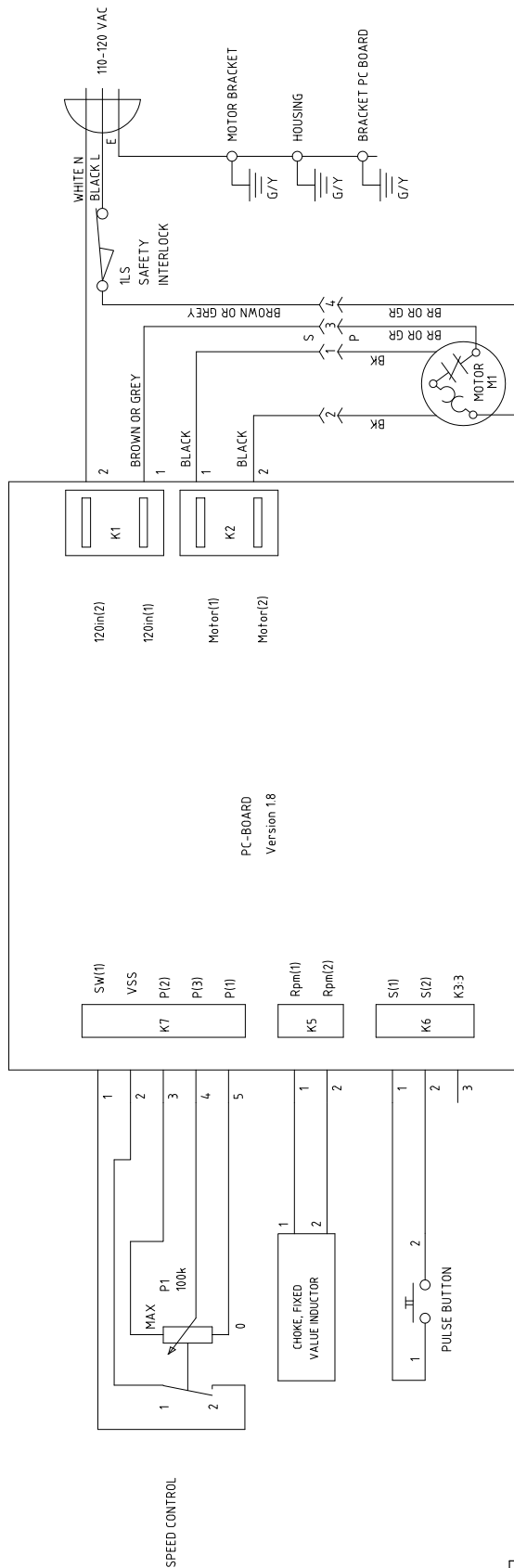


RG-350



RG-400

Nr. LTR	Ant. Nbr.	Ändring Revisions	Datum Date	Inf. Dwn by	Godk. Appr.	ÄO Nr. Ch.O. No.
A	1	QUICK CONNECTOR ADDED	980109	UE n	JS†	1061



Dwn by	UE n	Rev. date	980109
Appr.	JS†	Date	970317
Drawing no.		23186/A	

**HALLDE**

SB-4, ELECTRICAL DIAGRAM  
MACHINE 100-120 V, STD

BLUE

BLACK/  
BLACK

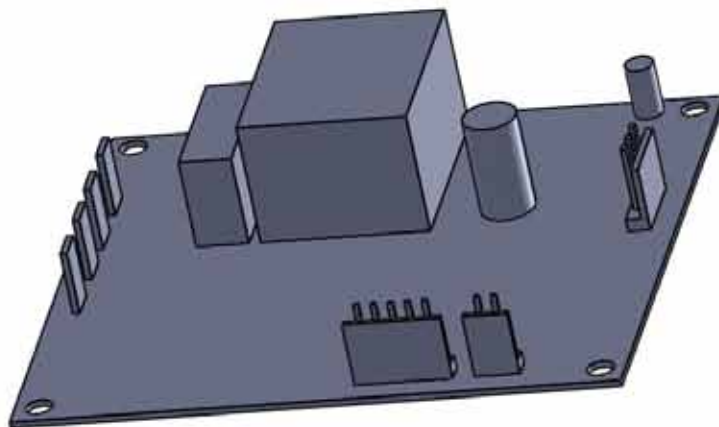
BLACK/  
WHITE

BLACK/  
WHITE

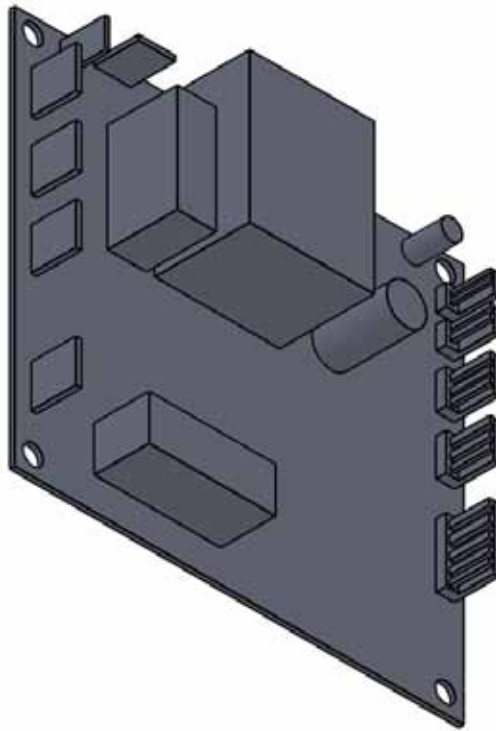
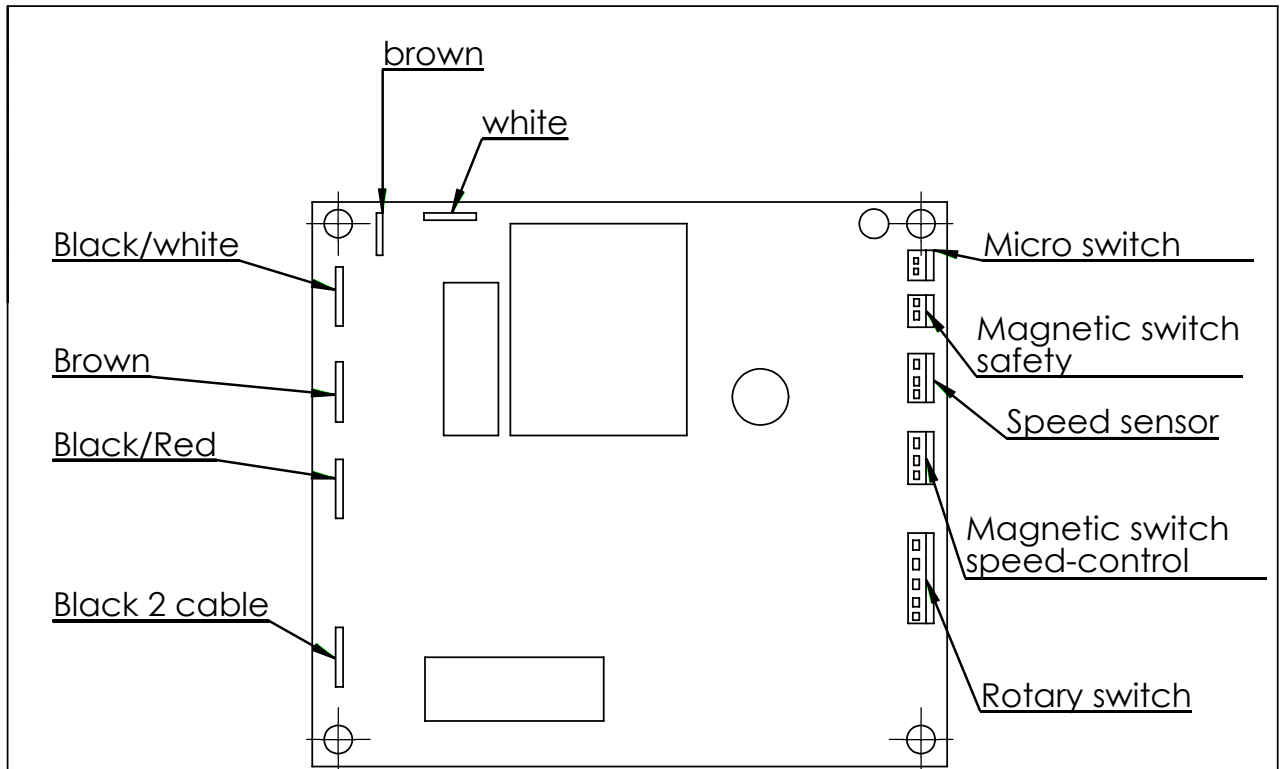
SPEED

ROTARY SWITCH

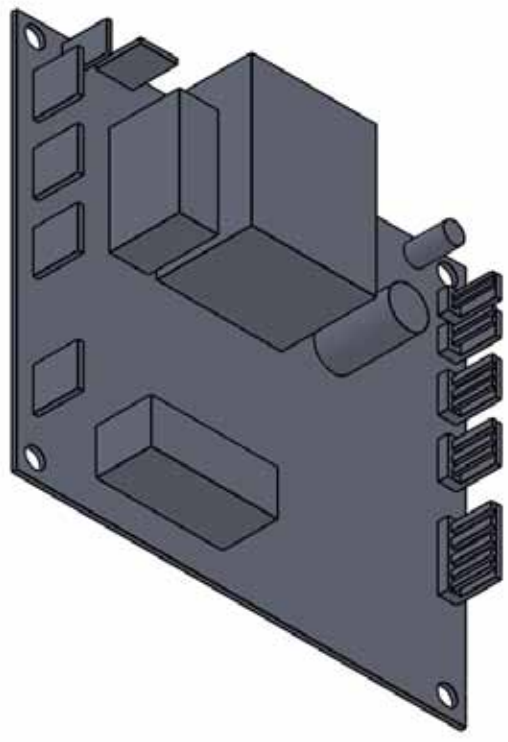
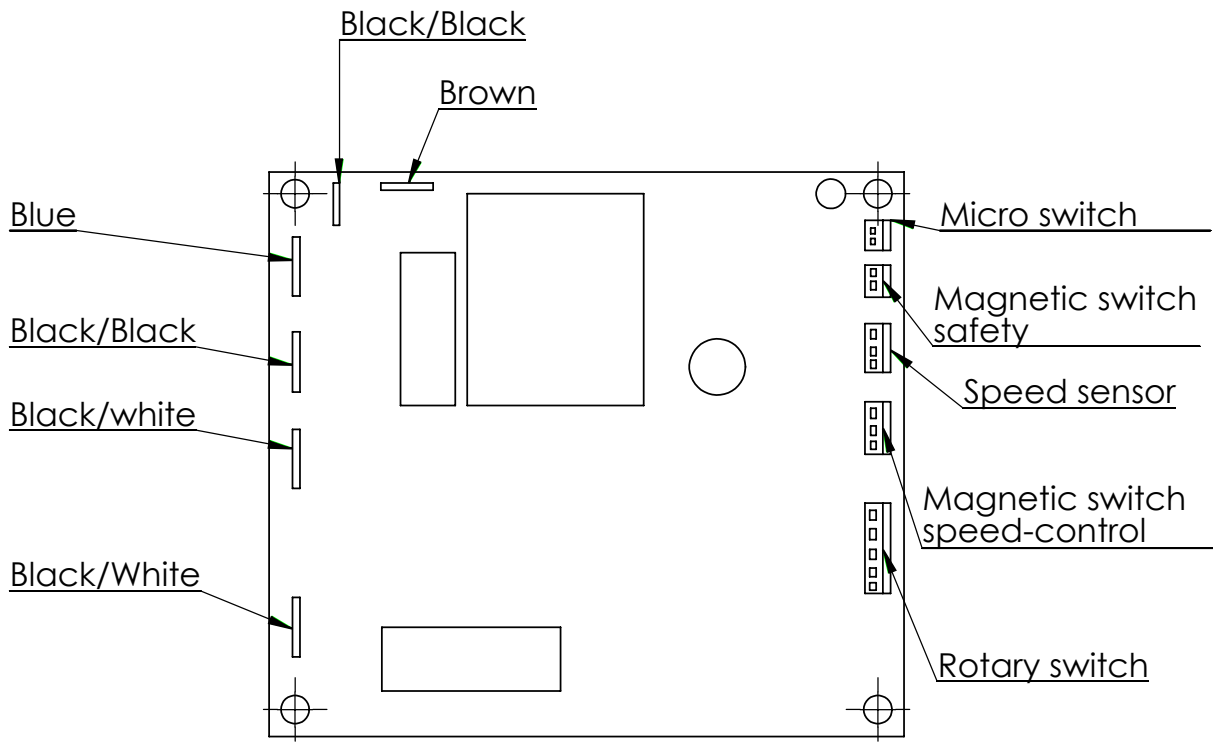
PULSE



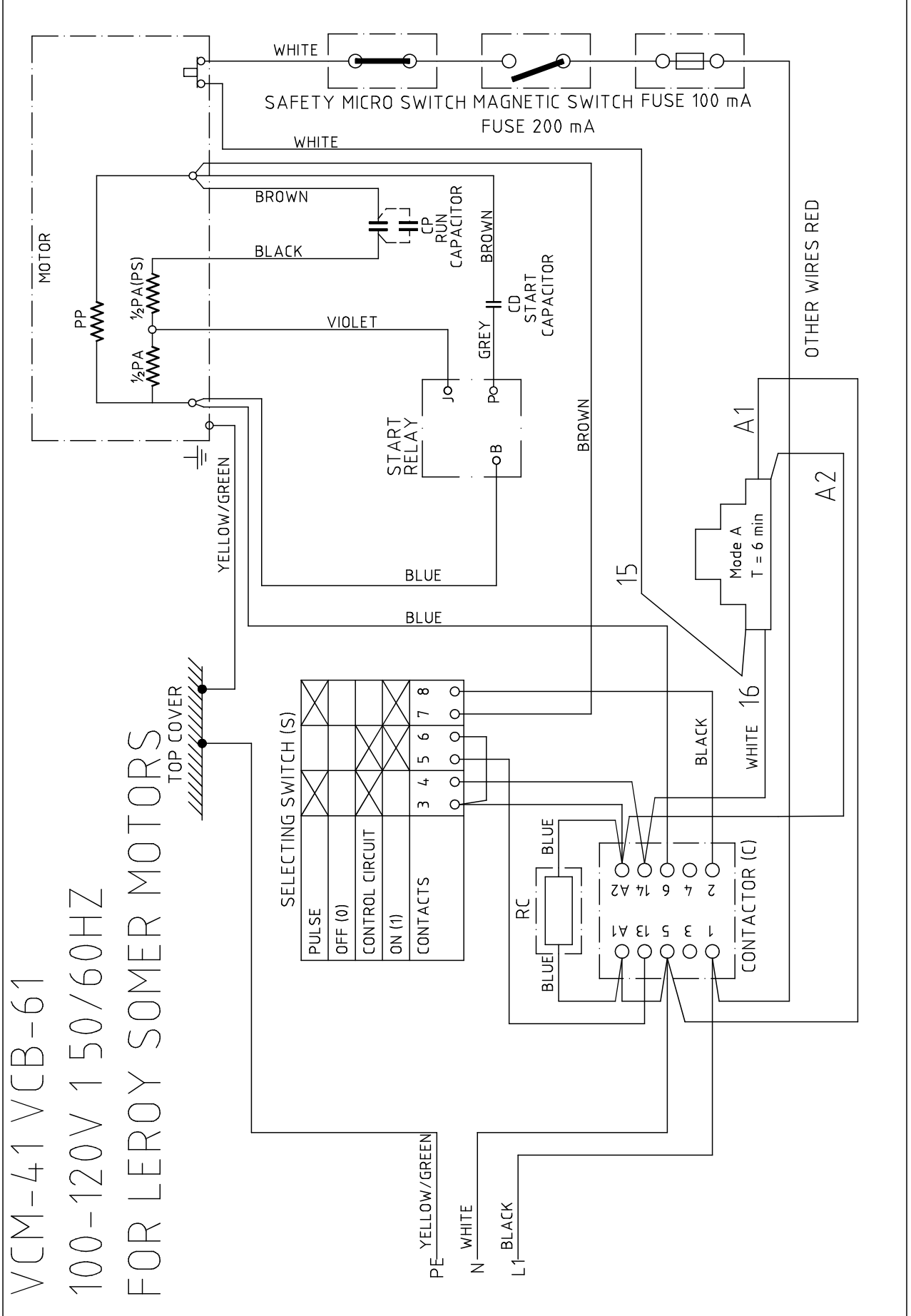
Det.nr Item no.	Ant. Nbr.	Benämning Part name	Material Material	Mod.nr,Ämne,Dimens. Mode.no, dimension	Anm./ Ritn.nr. Note / Drawing no.
		Där ej annat anges When not specified	Tolerans Tolerance ISO 2768-m	Ytbehandling Surface treatment	
			Ytjämnhet Smoothness Ra 6,3	Värmebehandl. Heat treatment	
Konstr. Design.	Ritad av Dwn by TF	Vikt Weight	Godk. för 0-serie Appr. for preseries	Godk. för produkt. Appr. for produc. TF	Skala Scale 1:1
					Ersätter Replacing
					Dat. Date
PC-BOARD SB-4 230 1 50					Ritn.nr Drawing no. 24346



Det.nr Item no.	Ant. Nbr.	Benämning Part name	Material Material	Mod.nr,Ämne,Dimens. Mode.no, dimension	Anm./ Ritn.nr. Note / Drawing no.
		Där ej annat anges When not specified	Tolerans Tolerance ISO 2768-m	Ytbehandling Surface treatment	
			Ytjämnhet Smoothness Ra 6,3	Värmebehandl. Heat treatment	
Konstr. Design.	Ritad av Dwn by	Vikt Weight	Godk. för 0-serie Appr. for preseries	Godk. för produk. Appr. for produc.	Skala Scale 1:1
					Ersätter Replacing 15712
CC-34/32/32s, VCM-32,C-32 B-32, VCB-32/31s, RG-50s 120v					Dat. Date 110629
					Ritn.nr Drawing no. 24344



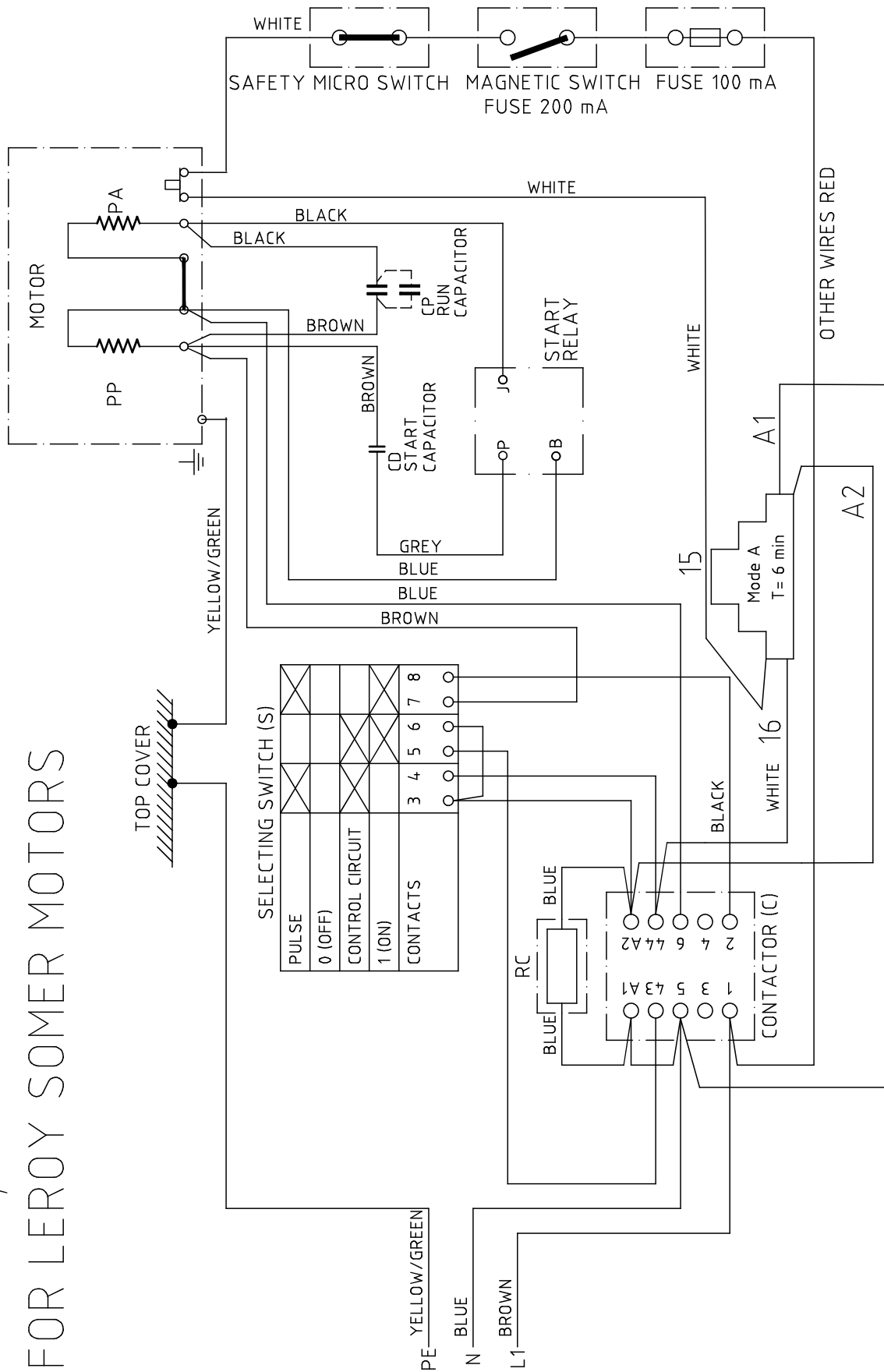
Det.nr Item no.	Ant. Nbr.	Benämning Part name	Material Material	Mod.nr, Ämne, Dimens. Mode.no, dimension	Anm./ Ritn.nr. Note / Drawing no.	
		Där ej annat anges When not specified	Tolerans Tolerance Ytjämnhet Smoothness	ISO 2768-m Ra 6,3	Ytbehandling Surface treatment Värmebehandl. Heat treatment	
Konstr. Design.	Ritad av Dwn by	Vikt Weight	Godk. för 0-serie Appr. for preseries	Godk. för produk. Appr. for produc.	Skala Scale 1:1	Ersätter Replacing 15712
				CC-34/32/32s, RG-50/50s, vcb-32/31s 230v	Dat. Date 110629	Ritn.nr Drawing no. 24343



<b>HALLDE</b>	VCM-41, VCB-61	Appr. JSt	Date 20100203
	100-120 150/60	Drawing no. 21000/A	

Nr LTR	Ant. Nbr.	Ändring Revisions	Datum Date	Inf. Dwn by	Godk. Appr.	ÄO Nr. Ch.O. No.
A	2	THE CAPACITORS COUPLING HAS CHANGED	100329	JH	OH	2231

VCM-41, VCB-61 220-240V50/60HZ  
FOR LEROY SOMER MOTORS

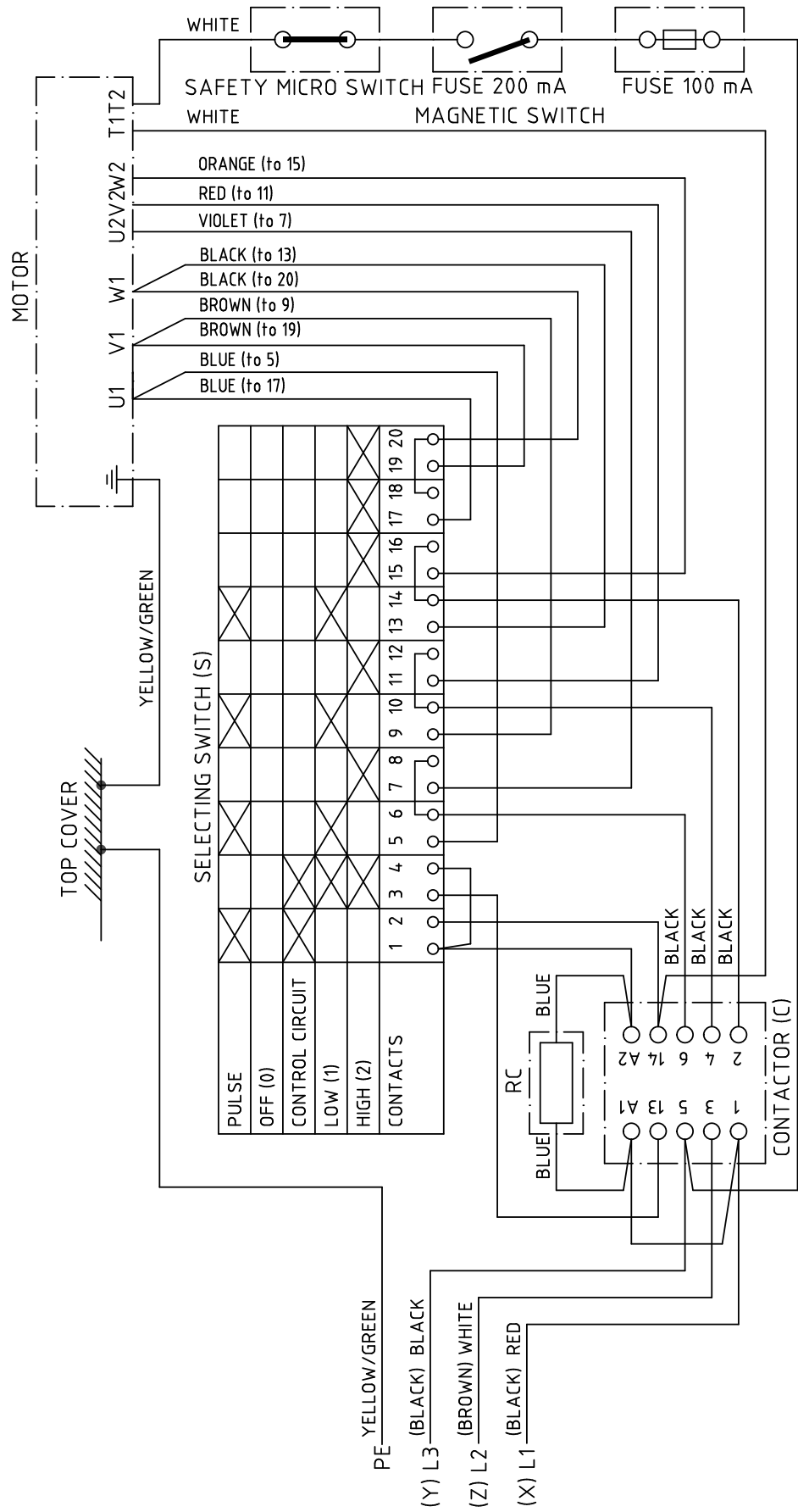


**HALLDE**

VCM-41, VCB-61  
220-240 150/60

Appr. OH Date 20100203  
Drawing no. 21005/B

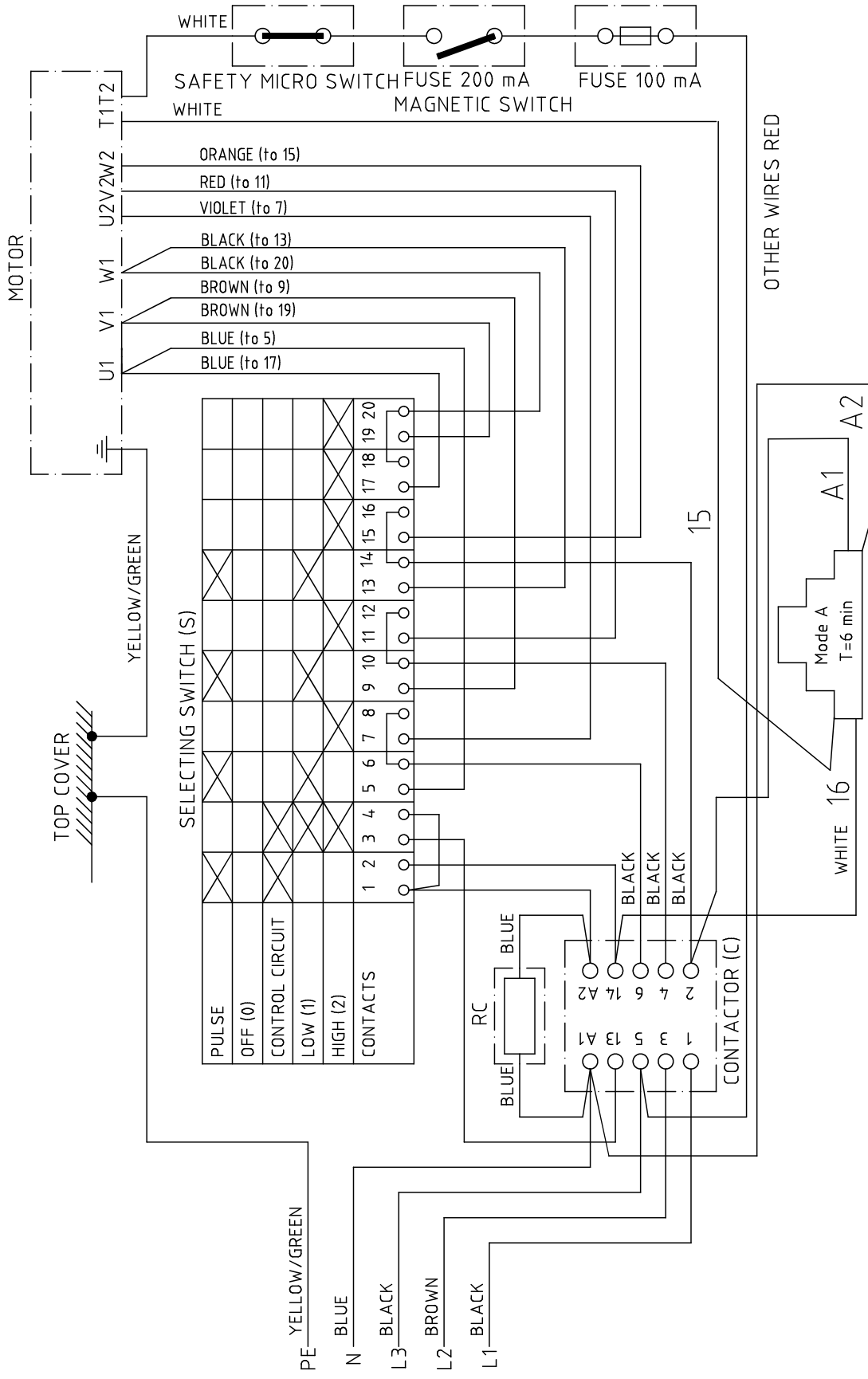
# VCM-42, VCB-62, 208-440V 3 50/60HZ WITHOUT NEUTRAL WIRE FOR LEROY SOMER MOTORS



<b>HALLDE</b>	VCM-42, VCB-62	Appr. JSt	Date 20100205
	208-440 3 50/60 W/O NEUTRAL WIRE	Drawing no. 21017 C	



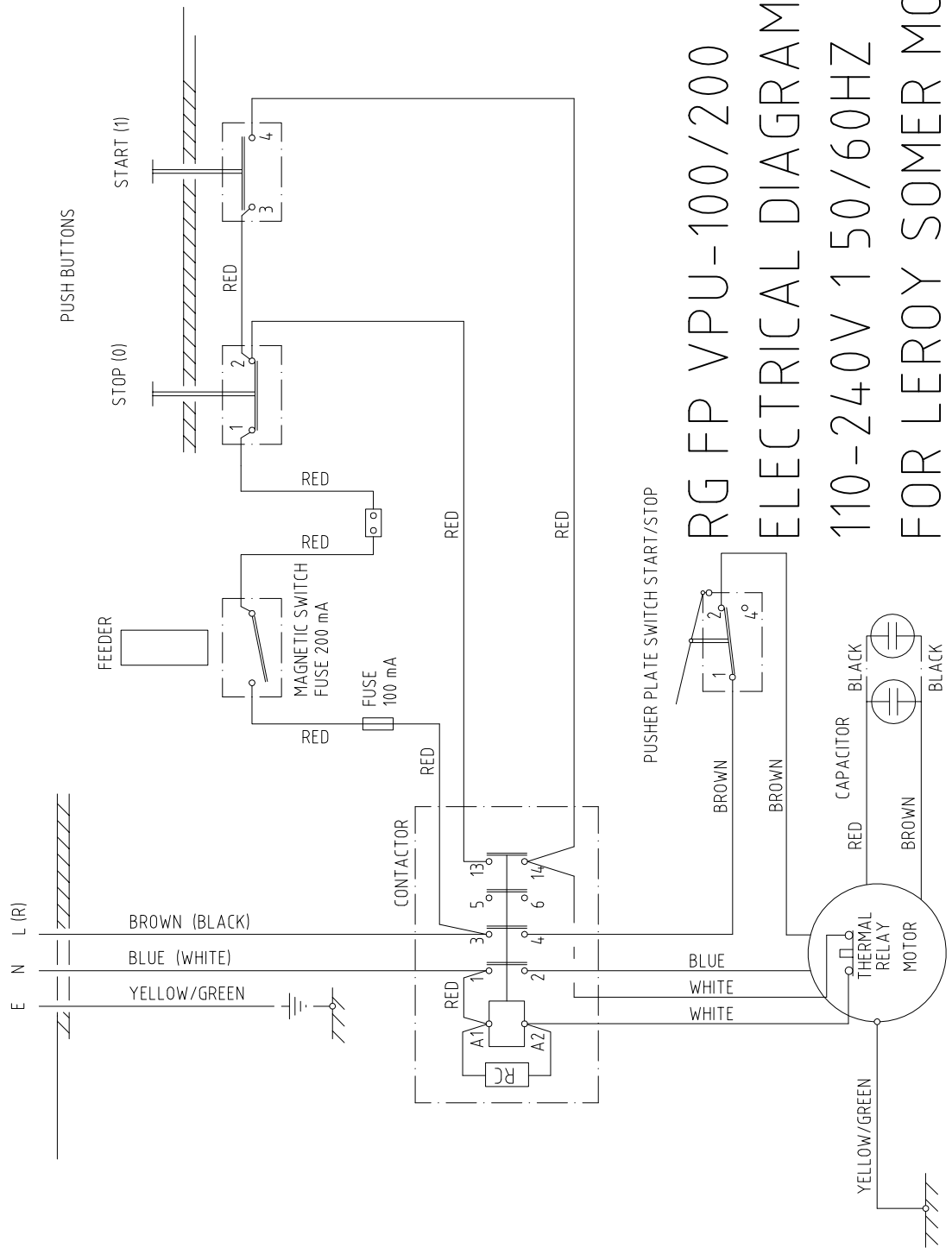
# VCM-42, VCB-62 380-440V 3 50/60HZ WITH NEUTRAL WIRE FOR LEROY SOMER MOTORS



**HALLDE**

VCM-42, VCB-62  
380-440 3 50/60 W. NEUTRAL WIRE

Appr. JSt Date 20100205  
Drawing no. 21015C



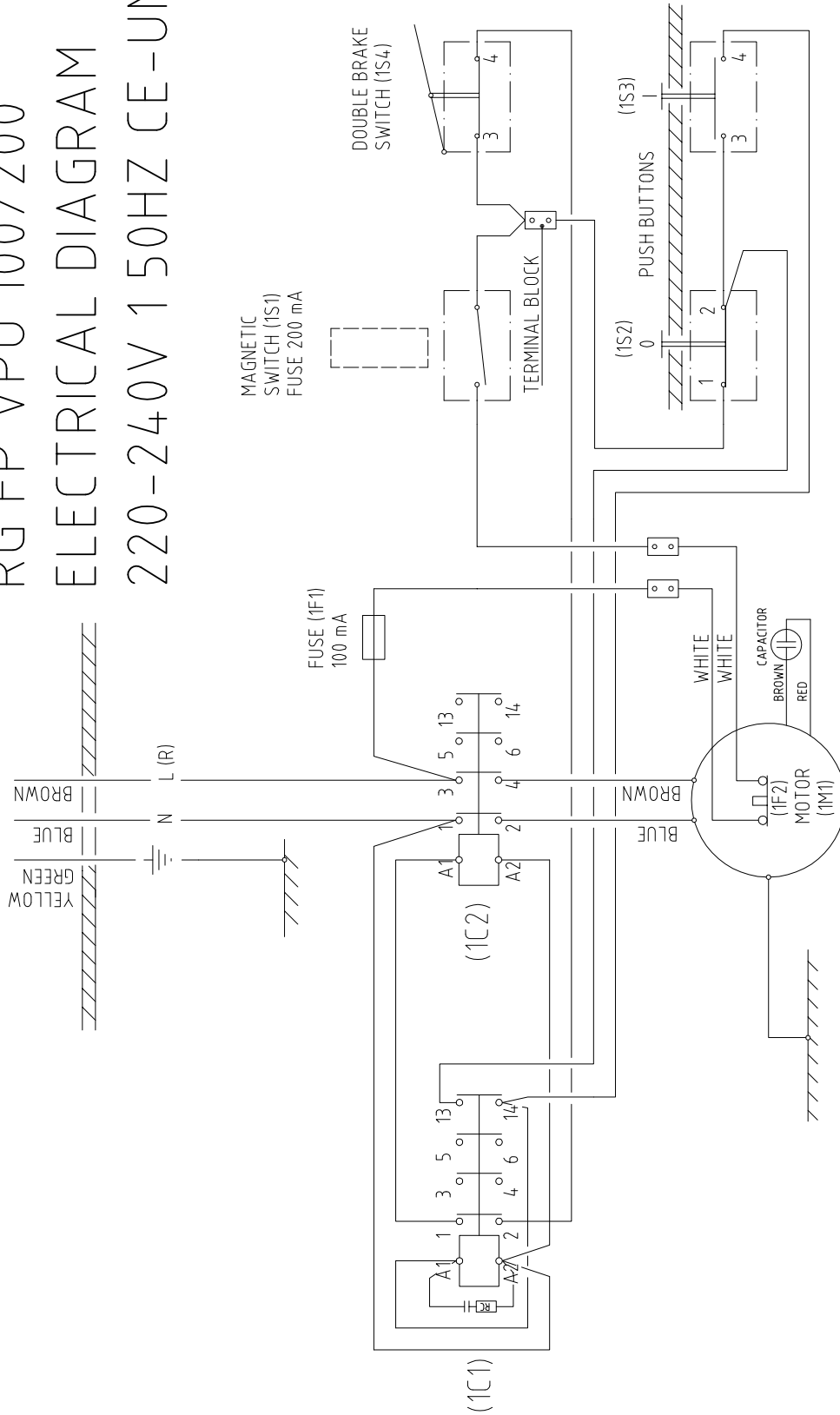
RG FP VPU-100/200  
ELECTRICAL DIAGRAM  
110-240V 1 50/60HZ  
FOR LEROY SOMER MOTORS

**HALLDE**

RG FP VPU-100/200  
110-240 1 50/60 EL. DIAGRAM

Dwn by JH	Rev.date
Appr. OH	Date 10-02-03
Drawing no.	21008

# RG FP VPU 100/200 ELECTRICAL DIAGRAM 220-240V 1 50HZ CE-UNITS



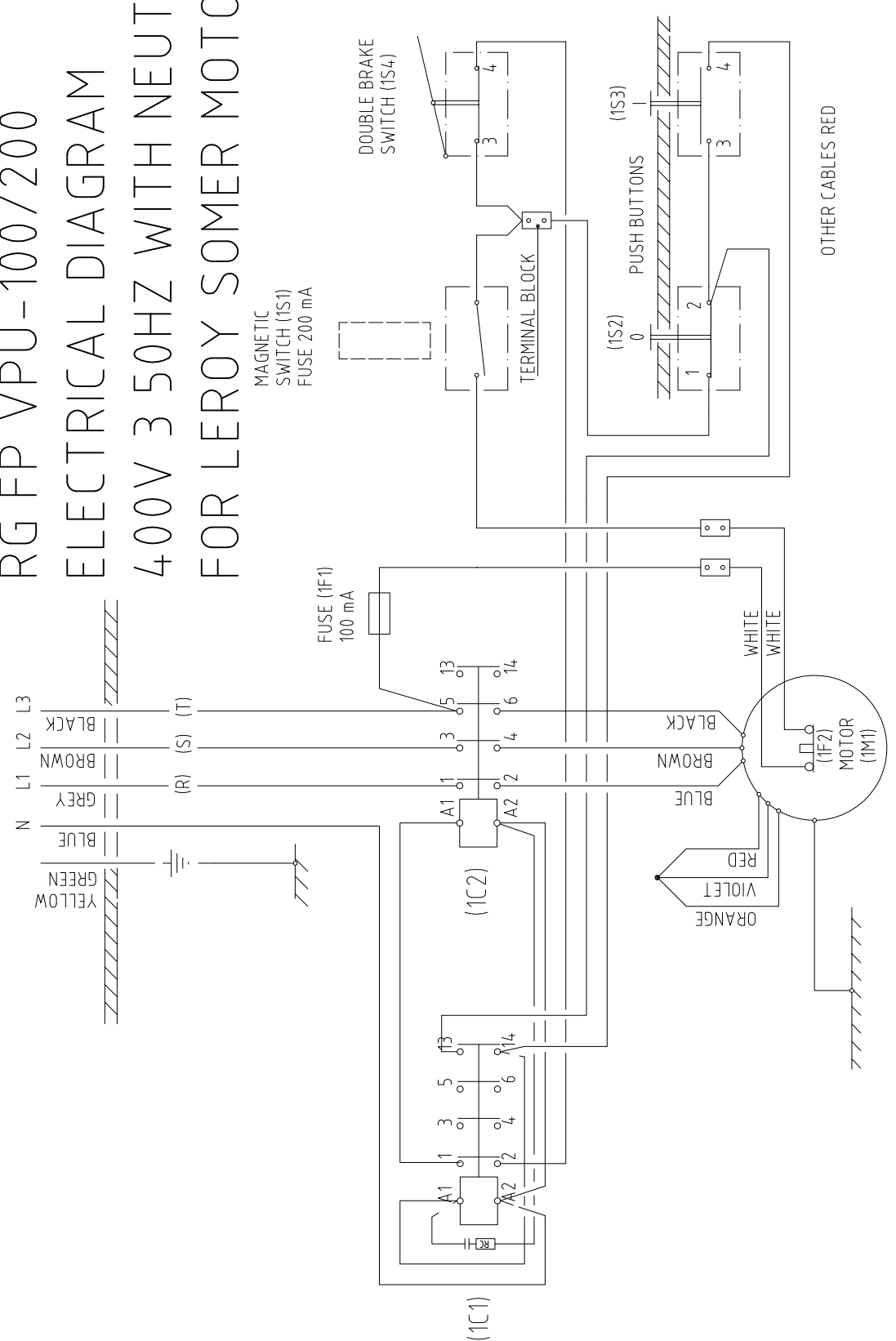
OTHER CABLES RED  
( ) = HOBART WIRING DIAGR.  
NO. B-14,0657  
VALID FROM MACHINE NO. 760537



RG FP VPU 100/200  
ELECTR. DIAGR. 220-240 1 50 CE-UNITS

Dwn by JH	Rev.date
Appr. JSt	Date 10-02-04
Drawing no.	21002

# RG FP VPU-100/200 ELECTRICAL DIAGRAM 400V 3 50HZ WITH NEUTRAL FOR LEROY SOMER MOTORS



RG FP VPU-100/200  
EL. DIAGR. 400 3 50 WITH NEUTRAL

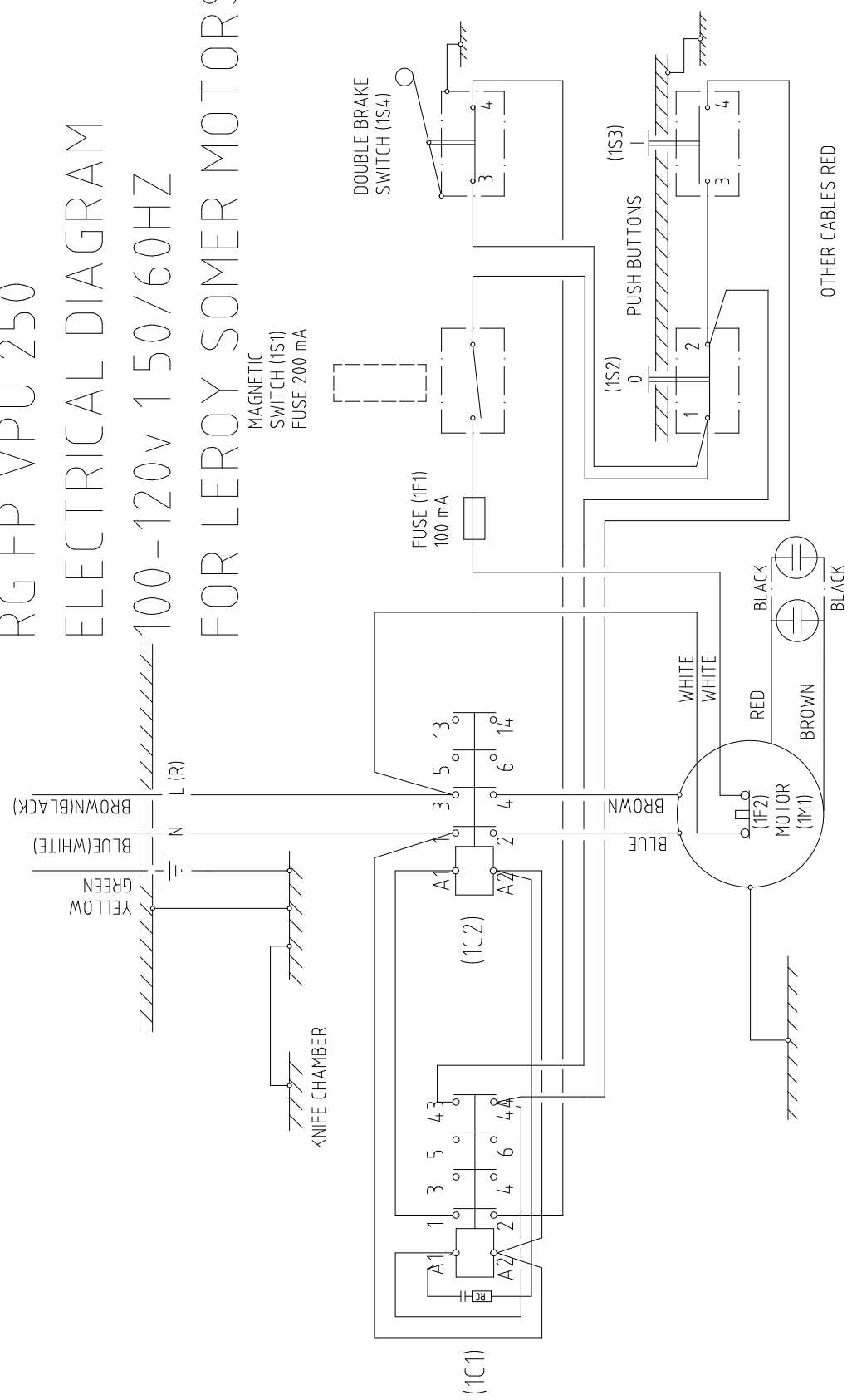
Dwn by	JH	Rev.date	
Appr.	JSt	Date	100205
Drawing no.		21019	

# RG FP VPU 250

## ELECTRICAL DIAGRAM

### 100-120v 150/60HZ

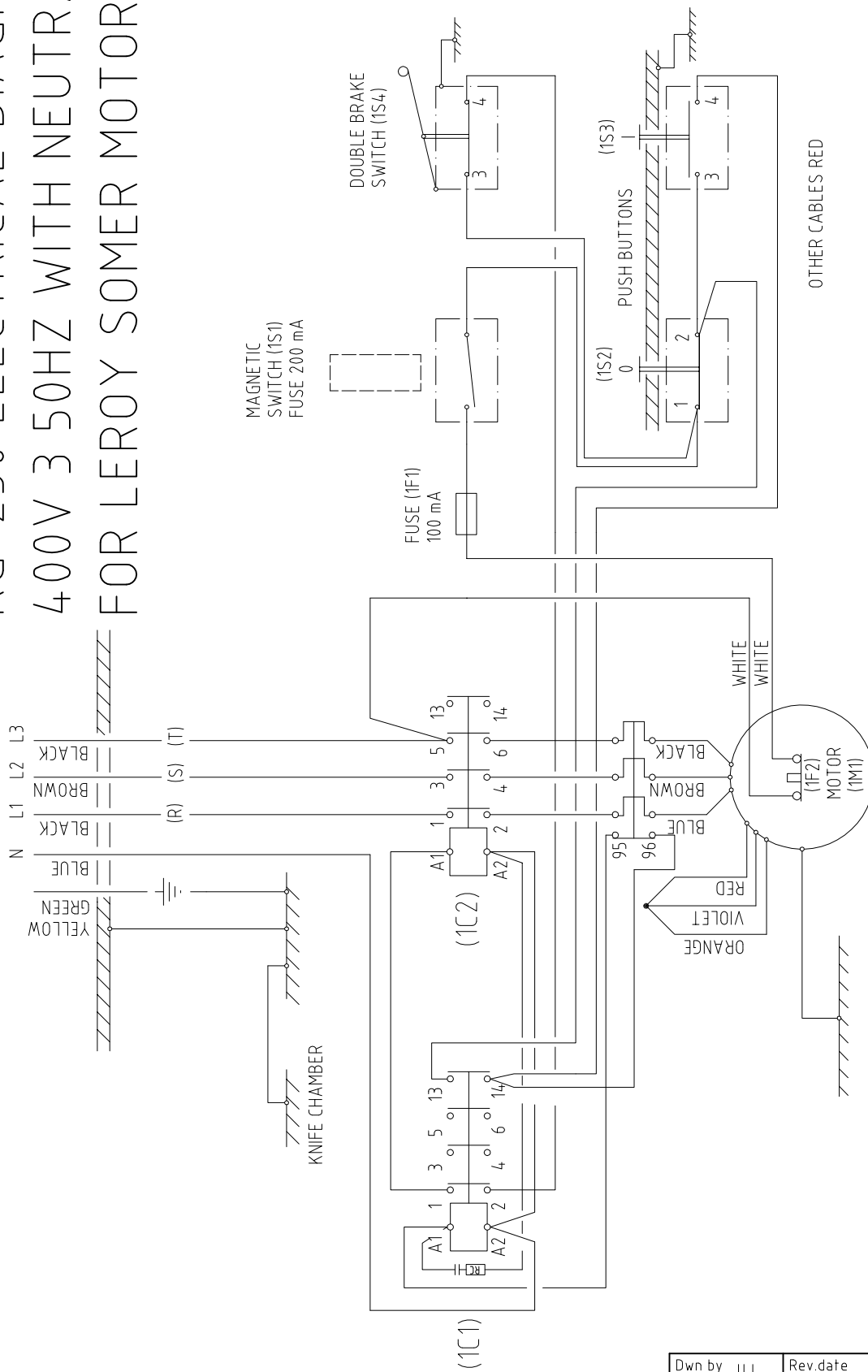
### FOR LEROY SOMER MOTORS



RG FP VPU 250  
ELECTR. DIAGR. 100-120 150/60

Dwn by JH	Rev.date
Appr. JSt	Date 10-02-04
Drawing no. 21012	

# RG-250 ELECTRICAL DIAGRAM 400V 3 50HZ WITH NEUTRAL FOR LEROY SOMER MOTORS

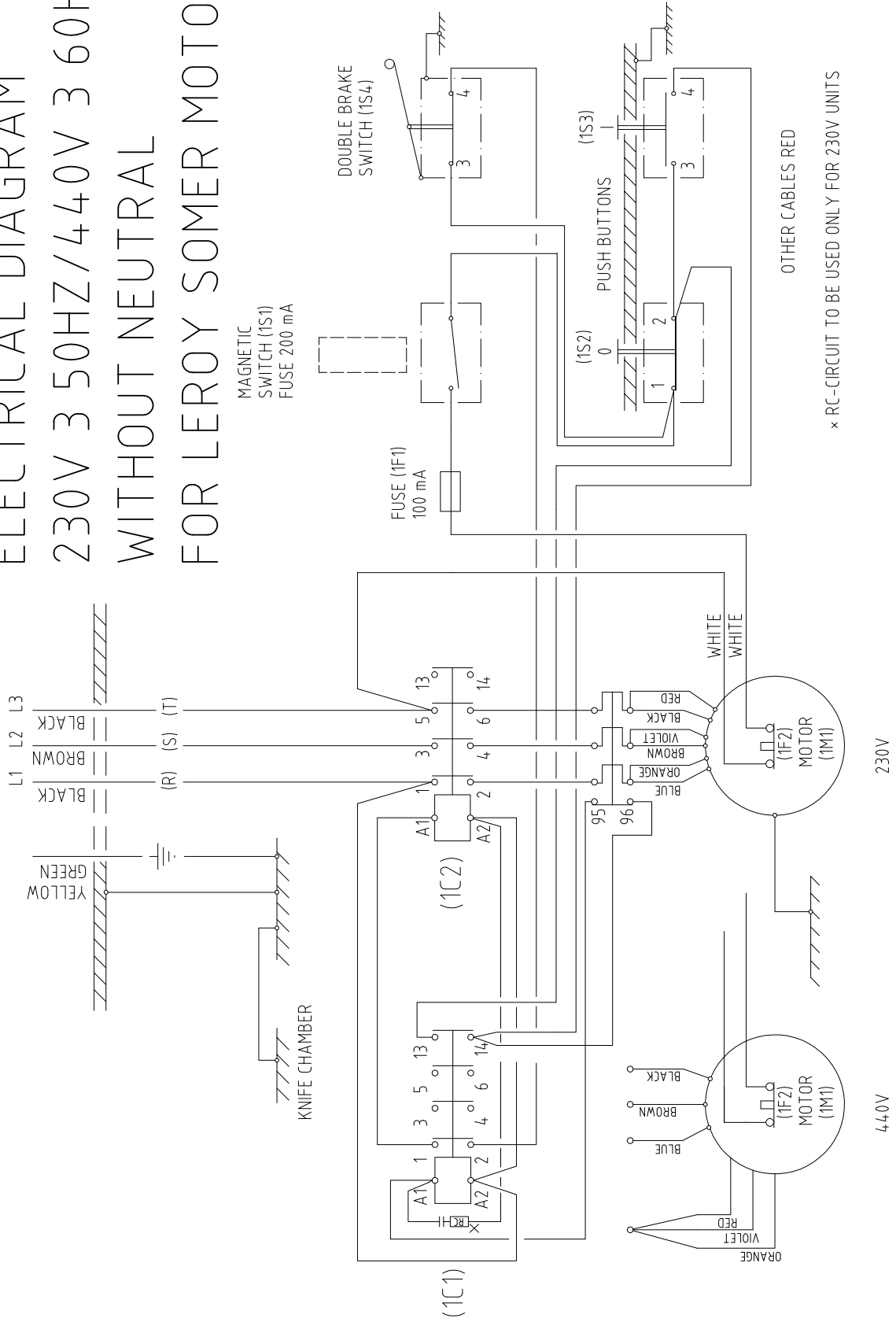


**HALLDE**

RG-250 ELECTR. DIAGR.  
400 3 50 WITH NEUTRAL

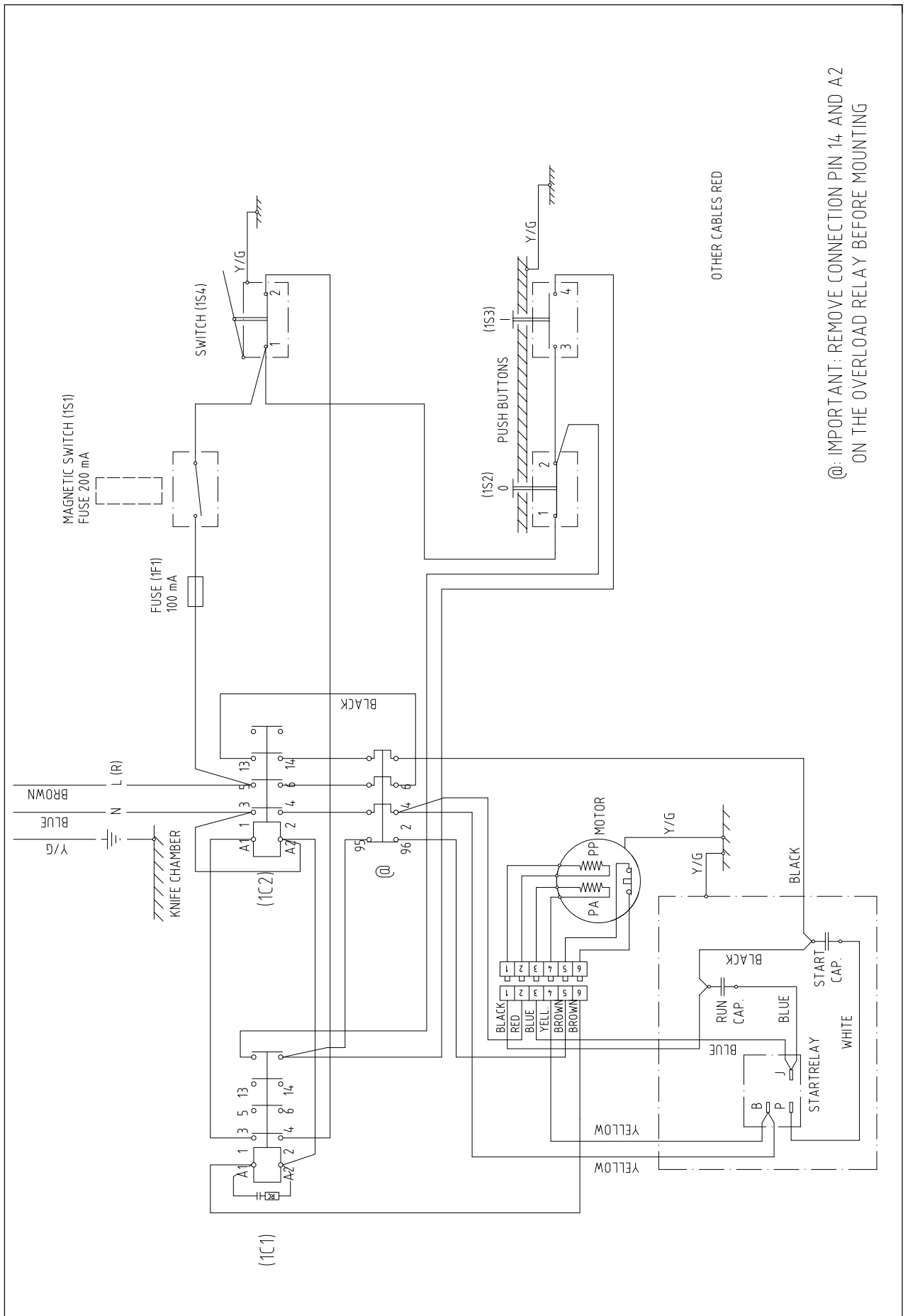
Dwn by JH	Rev.date
Appr. JSt	Date 100222
Drawing no. 21001	

# RG FP VPU-250 ELECTRICAL DIAGRAM 230V 3 50HZ/440V 3 60HZ WITHOUT NEUTRAL FOR LEROY SOMER MOTORS



RG FP VPU-250 EL. DIAGR.  
230 3 50 / 440 3 60 W,0 NEUTRAL

Dwn by JH	Rev.date
Appr. JSt	Date 10-02-05
Drawing no. 21021	



OTHER CABLES RED

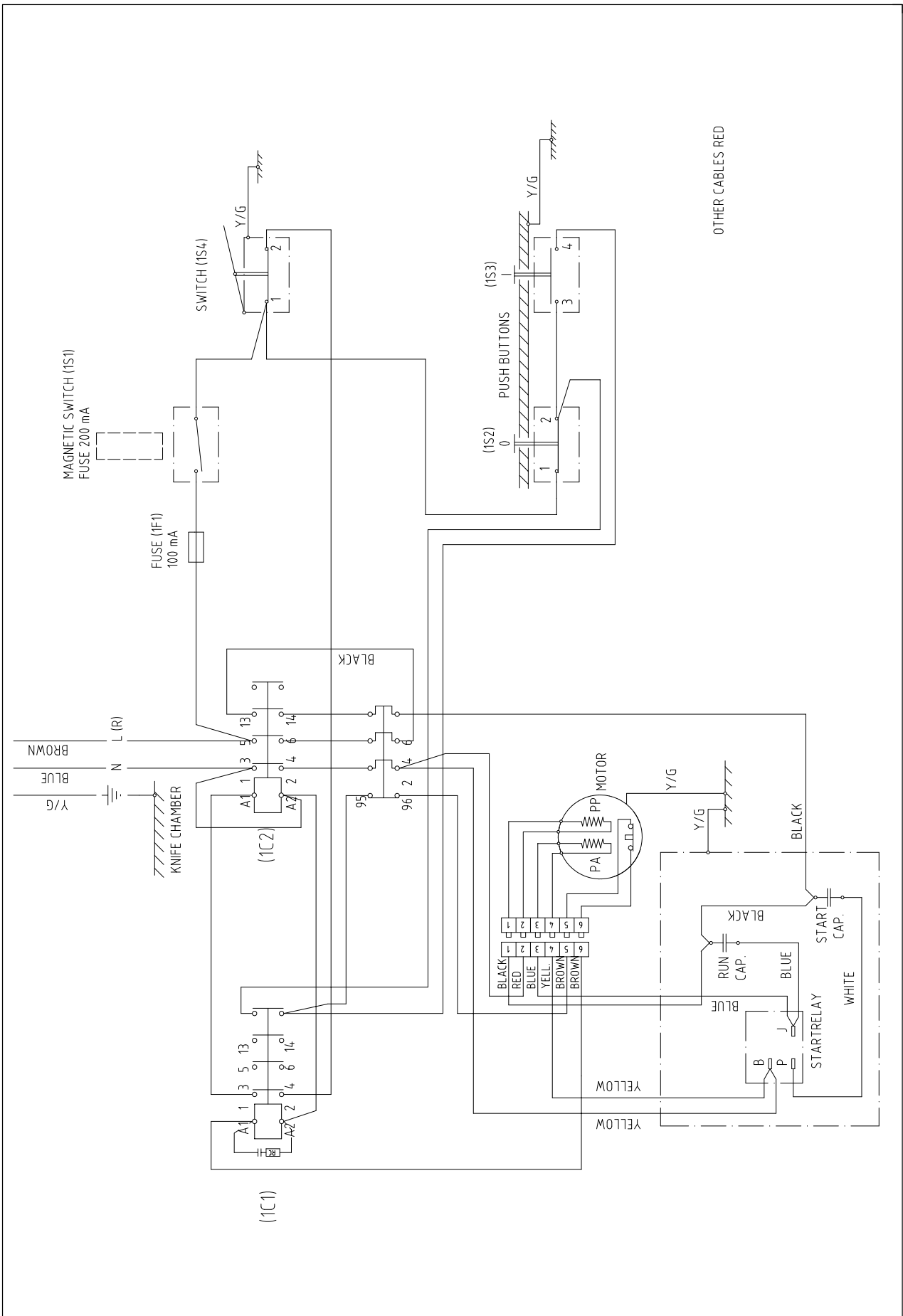
@: IMPORTANT: REMOVE CONNECTION PIN 14 AND A2 ON THE OVERLOAD RELAY BEFORE MOUNTING

**HALLDE**

RG-300, ELECTR. DIAGRAM  
220-240 150/60, LS-RELAY

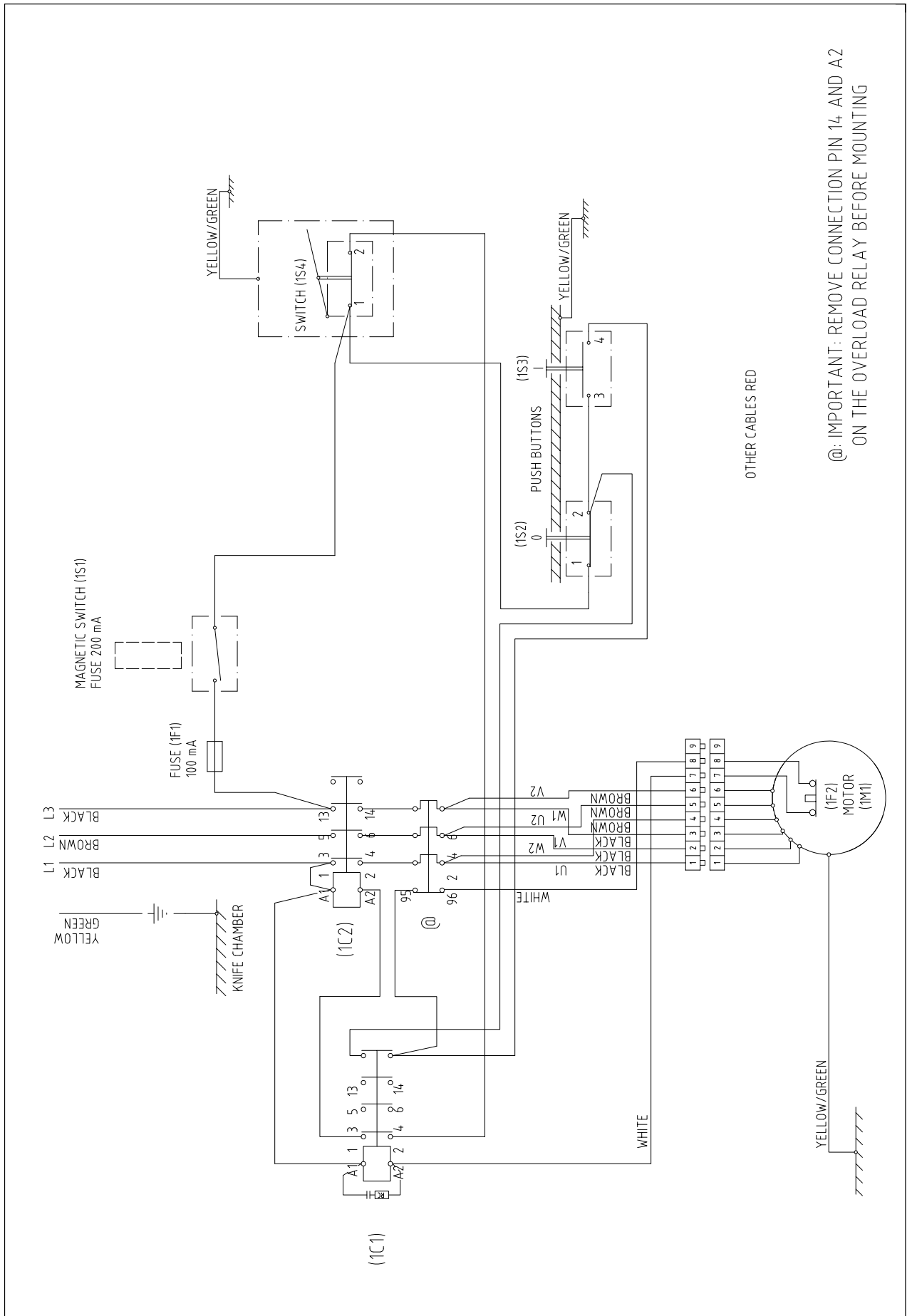
Dwn by	UE <sub>n</sub>	Rev. date	96-02-21
Appr.	JSt	Date	94-12-19
Drawing no.	40736		





Dwn by UEn	Rev.date 96-01-05
Appr. JSt	Date 94-12-19
Drawing no.	40737

**HALLDE** RG-300, ELECTR. DIAGRAM  
110-120 150/60, LS-RELAY



OTHER CABLES RED

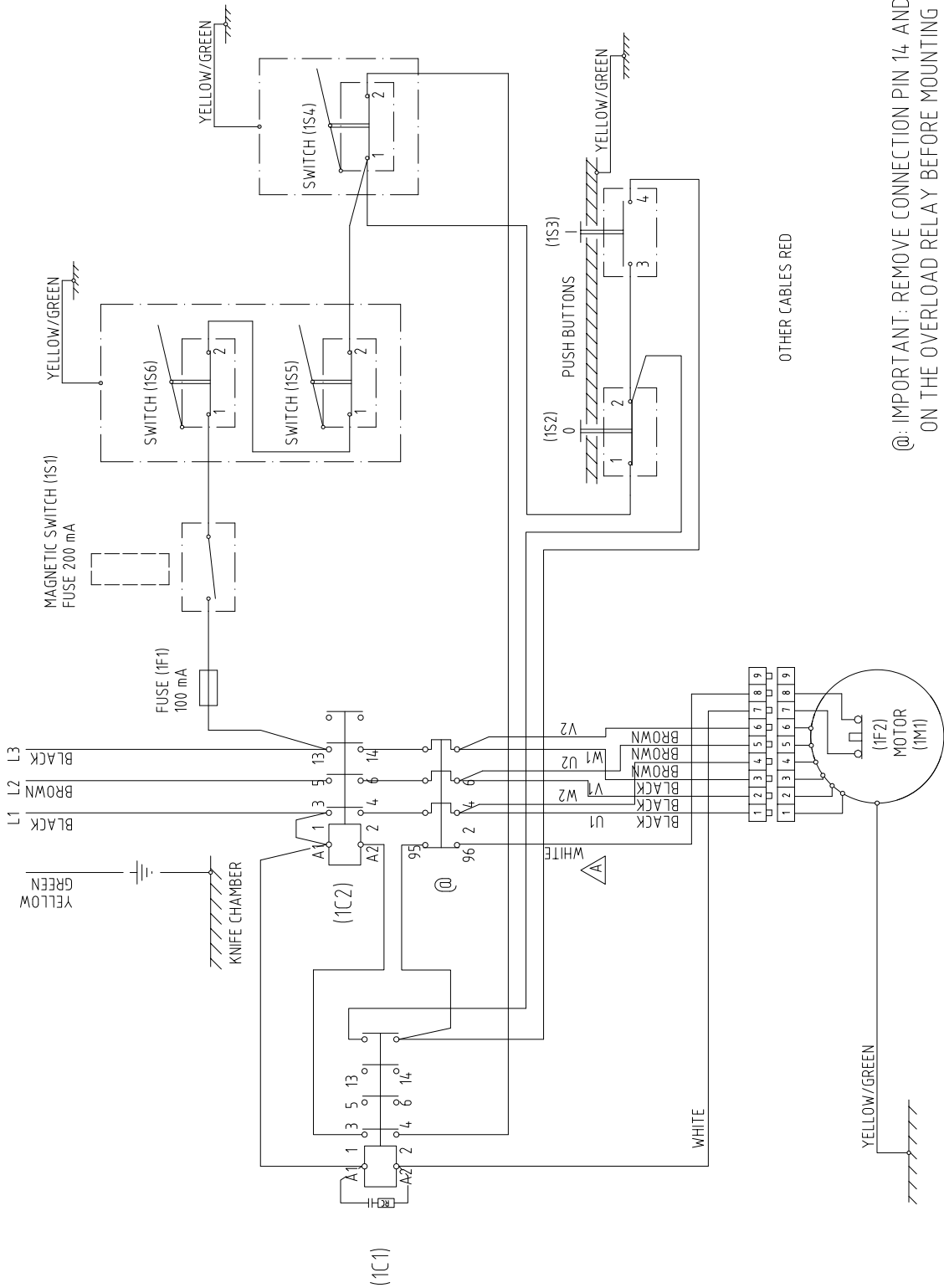
@: IMPORTANT: REMOVE CONNECTION PIN 14 AND A2 ON THE OVERLOAD RELAY BEFORE MOUNTING

**HALLDE**

RG-300, ELECTR. DIAGRAM  
220-230 3 50/60 W/O NEUTRAL WIRE

Dwn by	UEn	Rev.date	96-02-21
Appr.	JSt	Date	95-05-18
Drawing no.	40785		

Ltr	No	Revision	Date	Dwn.by	Appr.	Ch.0. No
A	1	COLOURS CHANGED	950307	UEn	JSt	765



OTHER CABLES RED

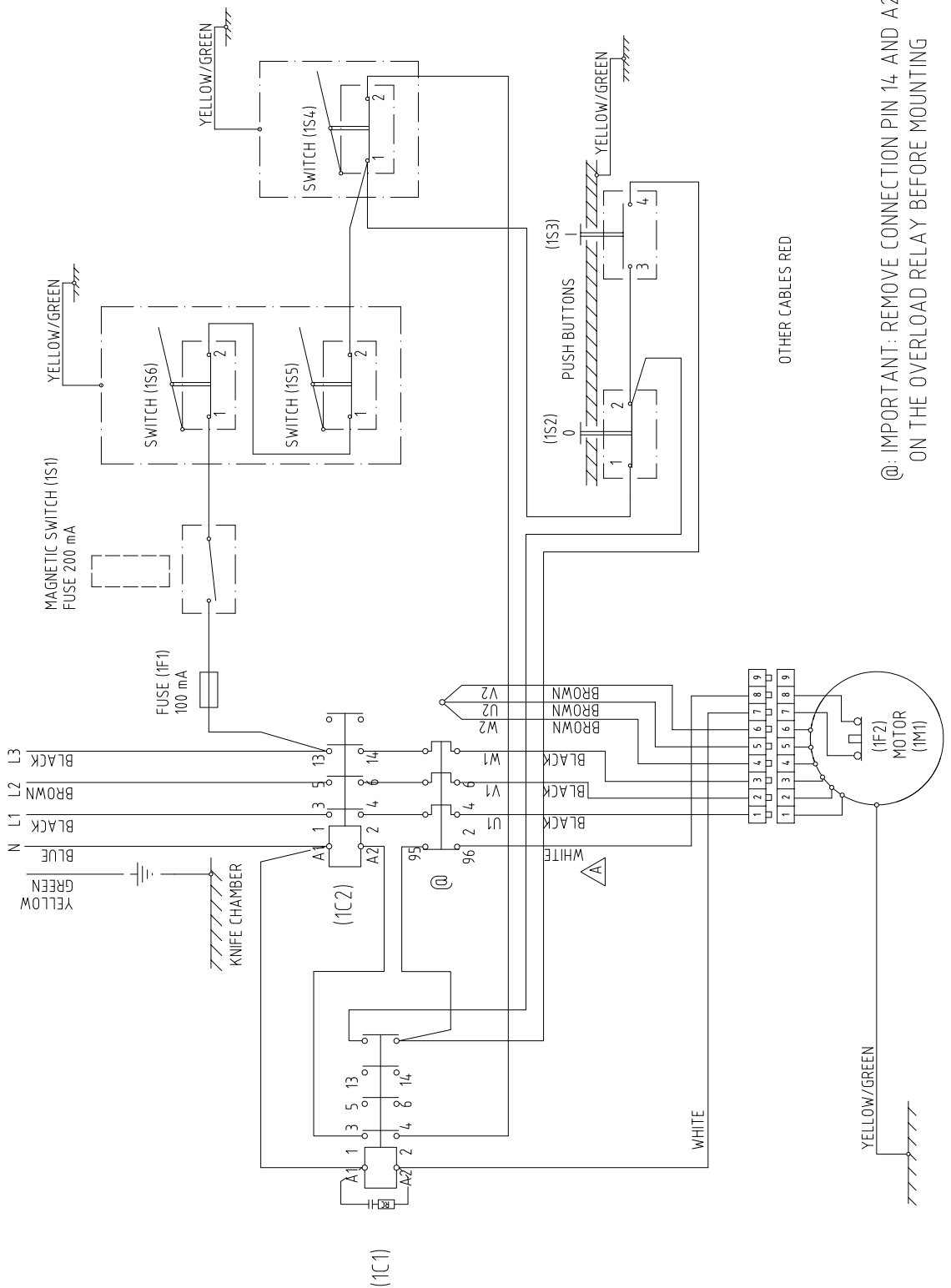
@: IMPORTANT: REMOVE CONNECTION PIN 14 AND A2 ON THE OVERLOAD RELAY BEFORE MOUNTING

**HALLDE**

RG-350 ELECTR. DIAGRAM  
220-230 3 50/60 W/O NEUTRAL WIRE

Dwn by	UEn	Rev.date	96-02-21
Appr.	JSt	Date	94-11-17
Drawing no.	40698/A		

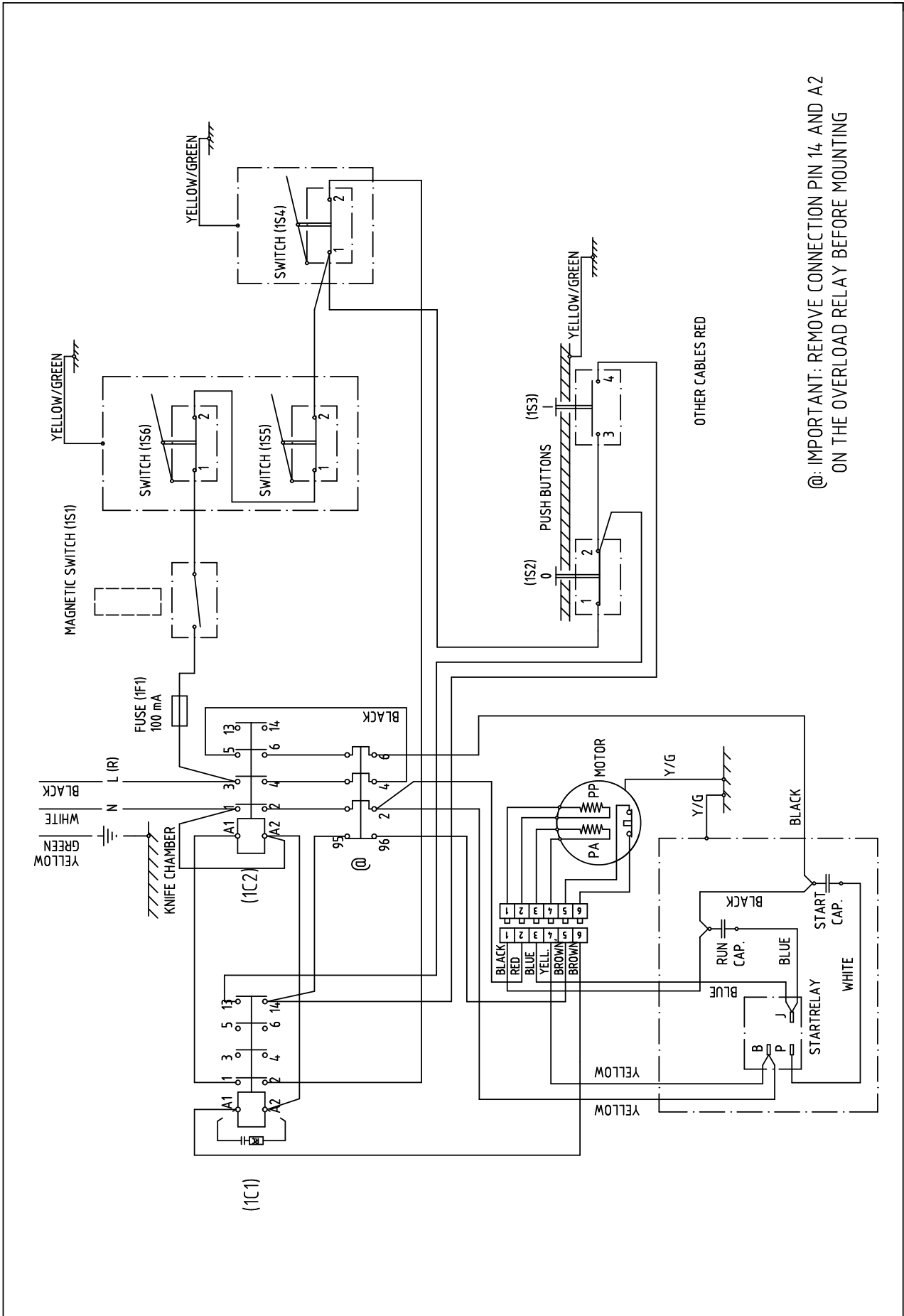
Ltr	No	Revision	Date	Dwn.by	Appr.	Ch.0. No
A	1	COLOURS CHANGED	950307	UEn	JSt	765



Dwn by	UEn	Rev.date	96-02-21
Appr.	JSt	Date	94-11-17
Drawing no.		40699/A	

**HALLDE**

RG-350 ELECTR. DIAGRAM  
380-415 3 50 W. NEUTRAL WIRE

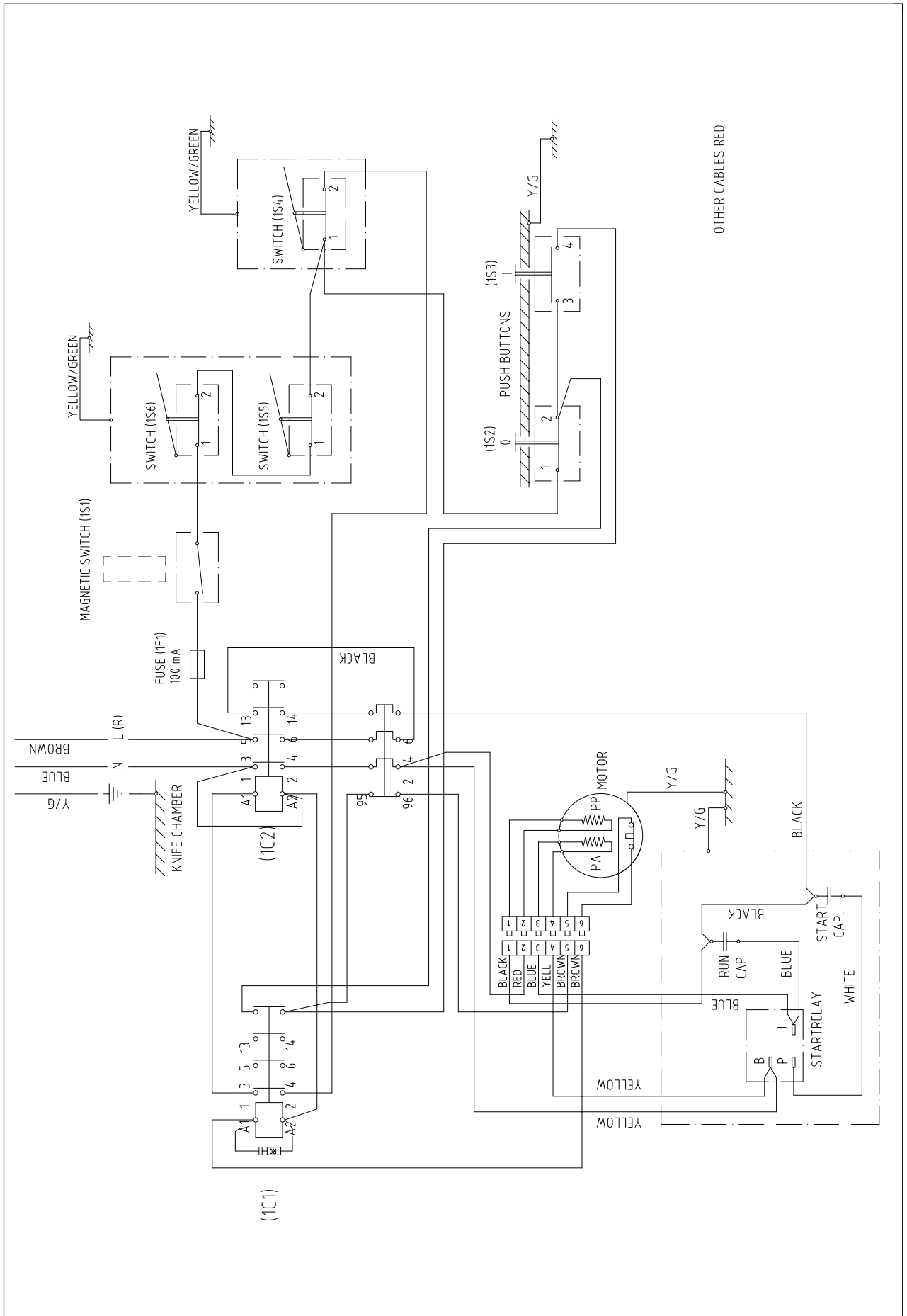


@: IMPORTANT: REMOVE CONNECTION PIN 14 AND A2 ON THE OVERLOAD RELAY BEFORE MOUNTING

**HALLDE**

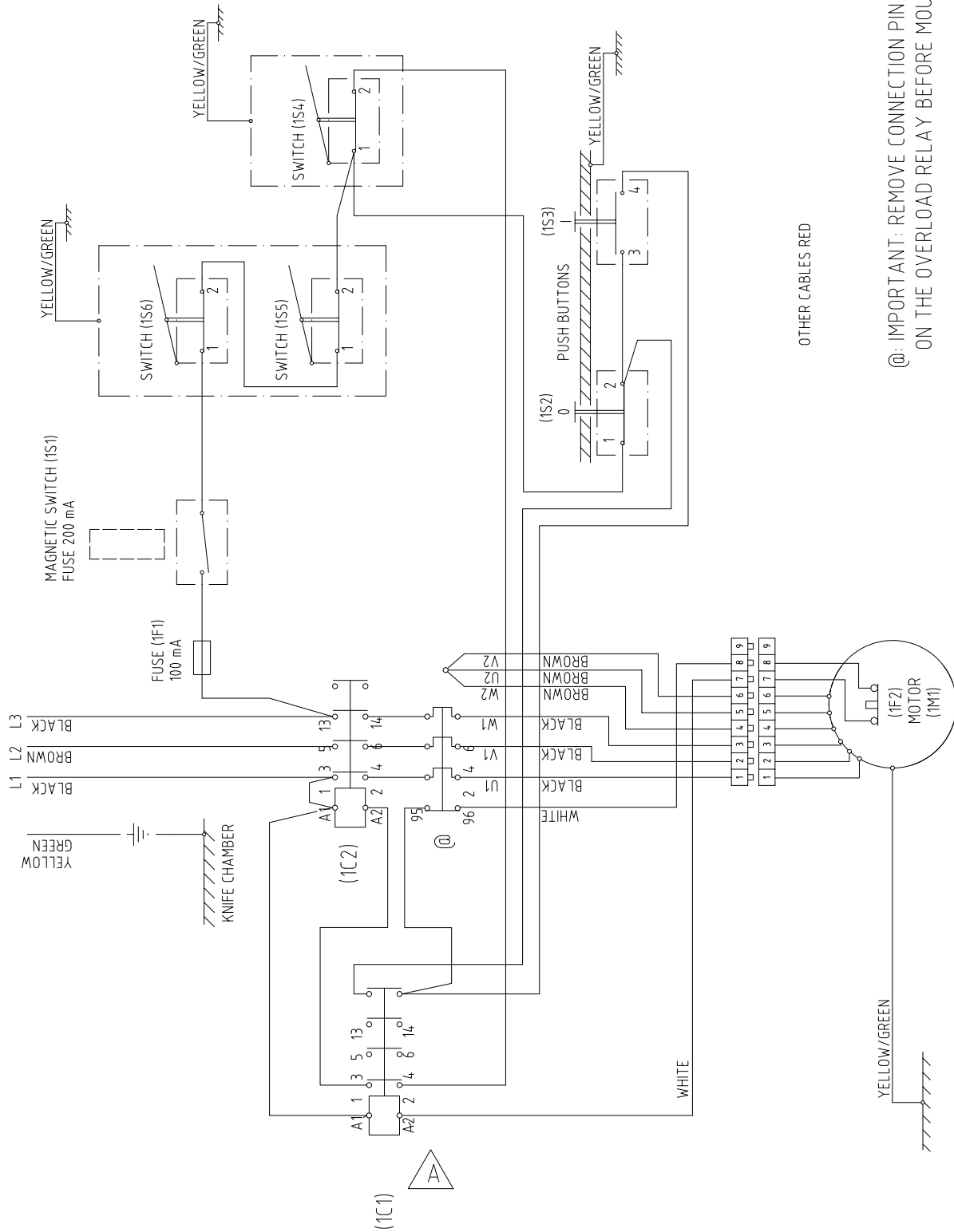
RG-350, ELECTR. DIAGRAM  
220-240 150/60, LS-RELAY

Dwn by UEn	Rev.date 96-02-21
Appr. JSt	Date 94-12-19
Drawing no. 40739	



	<b>RG-350, ELECTR. DIAGRAM</b> 110-120 150/60, LS-RELAY		Dwn by UEn    Rev.date 96-01-05
	Appr. JSt	Date 94-12-19	Drawing no.
	40740		

Ltr	No	Revision	Date	Dwn.by	Appr.	Ch.O. No
A	1	RC-UNIT REMOVED	961202	UEn	JSt	961



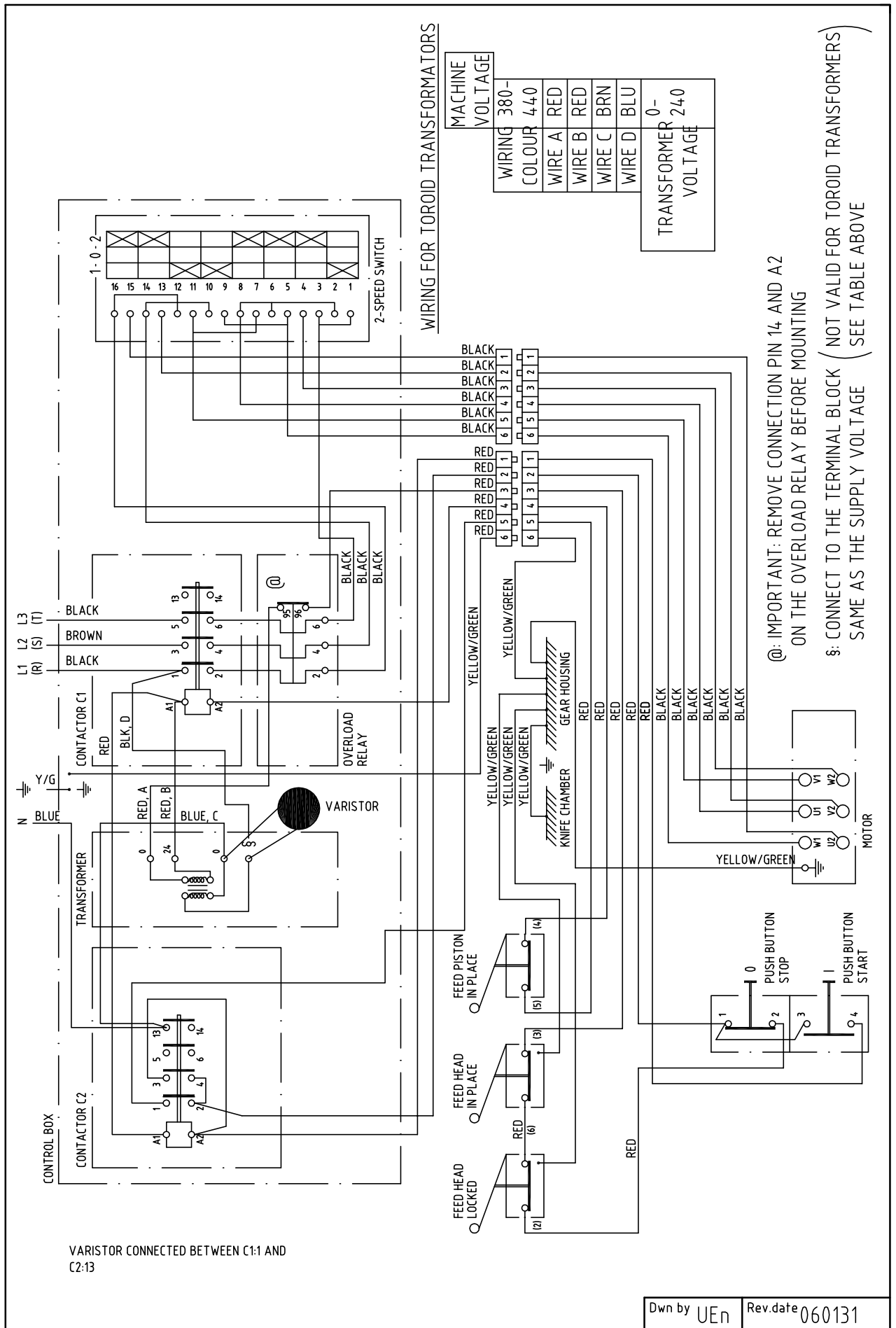
OTHER CABLES RED

@: IMPORTANT: REMOVE CONNECTION PIN 14 AND A2 ON THE OVERLOAD RELAY BEFORE MOUNTING

Dwn by	UEn	Rev.date	96-02-21
Appr.	JSt	Date	95-05-18
Drawing no.		40784/A	

**HALLDE**

RG-350, ELECTR. DIAGRAM  
380-460 3 50/60 W/O NEUTRAL WIRE



Ⓐ: IMPORTANT: REMOVE CONNECTION PIN 14 AND A2 ON THE OVERLOAD RELAY BEFORE MOUNTING

Ⓑ: CONNECT TO THE TERMINAL BLOCK ( NOT VALID FOR TOROID TRANSFORMERS ) SAME AS THE SUPPLY VOLTAGE ( SEE TABLE ABOVE )

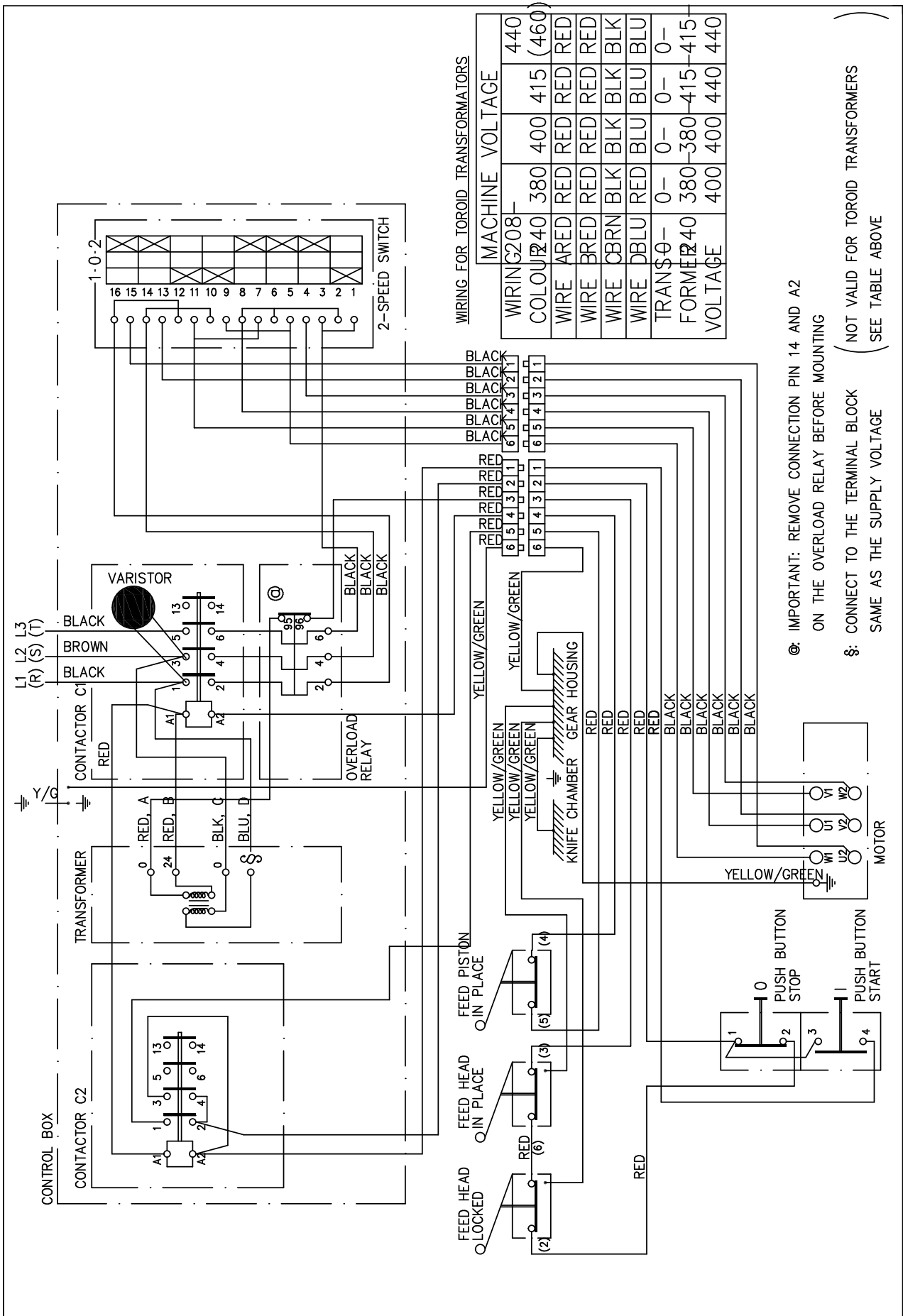
VARISTOR CONNECTED BETWEEN C1:1 AND C2:13

# HALLDE

**RG-400 ELECTRICAL DIAGR.**  
380-440 3 50/60 WITH NEUTRAL WIRE

Dwn by UEn	Rev.date 060131
Appr. JSt	Date 940901
Drawing no. 3163-2	





WIRING FOR TOROID TRANSFORMERS

WIRING	COLOUR	MACHINE VOLTAGE
C208	40	380
40	RED	400
40	RED	415
40	RED	460
WIRE	ARED	RED
WIRE	BRED	RED
WIRE	CBRN	BLK
WIRE	DBLU	BLU
WIRE	DBLU	BLU
TRANSFORMER	0-0	0-0
FORMER	40	380-415-460
VOLTAGE	400	400
	440	440

@: IMPORTANT: REMOVE CONNECTION PIN 14 AND A2 ON THE OVERLOAD RELAY BEFORE MOUNTING

§: CONNECT TO THE TERMINAL BLOCK SAME AS THE SUPPLY VOLTAGE (SEE TABLE ABOVE)

# HALLDE

RG-400 Electrical Diagram  
208-460 3 50/60 W/O NEUTRAL WIRE

Dwn by	UEn	Rev.date	981118
Appr.	JSt	Date	940901
Drawing no.	3163-3		

PNEUMATIC DIAGRAM / RG-400 / PUSH FEED ATTACHMENT, PNEUMATIC  
 PNEUMATIKSCHEMA / RG-400 / KÅL/RÅKOSTMATARE, TRYCKLUFTSDRIVEN

