

# Kulhojakelin upotettava Metos THSG.02

Jousivoimalla toimiva lämmitetty jakelin keittokulhojen esillepanoon. Jousien määrä säädettävissä kulhojen painon mukaan

- kalusteeseen upotettava malli ilman ulkovuorausta
- kalusteen minimikorkeus 900 mm
- yhdessä Metos keittopadan kanssa jakelin muodostaa herkullisen keittopisteen
- upotusmitat 365 mm \* 305 mm
- korkeus 680 mm



## Kulhojakelin upotettava Metos THSG.02

Tuotteen leveys mm	300
Tuotteen syvyys mm	300
Tuotteen korkeus mm	760
Pakkauksen tilavuus	0,082
Tilavuuden yksikkö	m3
Pakkauksen tilavuus	0,082 m3
Pakkauksen leveys	32
Pakkauksen syvyys	32
Pakkauksen korkeus	80
Pakkausmitan yksikkö	cm
Pakkauksen mitat (LxSxK)	32x32x80 cm
Nettopaino	15
Nettopaino	15 kg
Bruttopaino	17
Pakkauksen paino	17 kg
Painon yksikkö	kg
Liitäntäteho kW	0,4
Sulakkeen koko A	10
Liitäntäjännite V	230
Vaiheiden määrä	1NPE
Taajuus Hz	50/60
Sähköliitännän valmius	Pistoke
Lisähuomio (muut)	upotusaukko 365x305 mm

**Installation on top of the table**

**Drop-in bowl dispenser THSG.02**

Dimensions:

A x B = flange

E x F = cut out tube

l x b = tube internal

H = build in height

G = flange height

S = effective stacking height

p x q = operating panel

c = build in depth operating panel

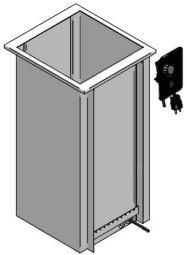
y x z = cut out operating panel

m x n = screw-hole centres operating panel

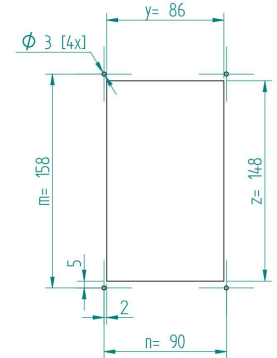
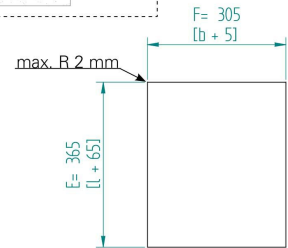
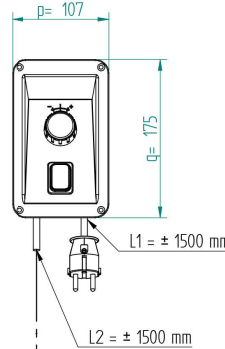
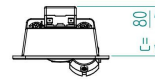
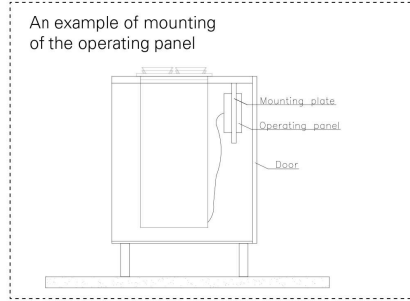
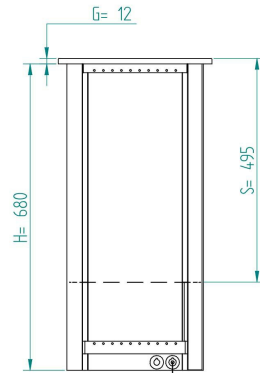
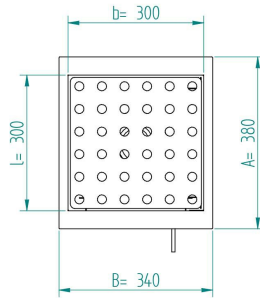
heating element 230V, 400W, 10A

weight (empty): 15 kg

The counter, where drop-in units are installed, must be damp-proof and strong enough to bear the appliance weight.



When constructing the counter, an opening for the connection cable must be considered. The opening must be at least the size of a plug (diameter min. 40 mm). In addition, the edges of the opening must be finished to make sure that the connection cable is not damaged by rubbing against the opening edge.



L1 = length cable with plug  
L2 = length cable between tube and operating panel