

Skåldispenser infällbar

Metos THSG.02

Dispenser med värme för soppskålar. Justerbar fjäderkraft enligt skålens vikt

- i möbeln infällbar modell utan sidopaneler
- möbelns minimihöjd 900 mm
- utgör fin soppstation tillsammans med Metos soppkittel
- infällningsdimensioner 365 mm * 305 mm
- höjd 680 mm



Skåldispenser infällbar Metos THSG.02

Bredde mm	300
Dyp mm	300
Høyde mm	760
Pakkevolum inkl. emballasje	0,082
Volumenhet	m3
Pakkevolum	0,082 m3
Lengde på forpakning	32
Bredde på forpakning	32
Høyde på forpakning	80
Forpakkingsstørrelse	cm
Transport mål (LxDxH)	32x32x80 cm
Netto vekt	15
Net weight with unit	15 kg
Bruttovekt	17
Vekt inkl. emballasje	17 kg
Vektenhet	kg
Tilkoblingseffekt kW	0,4
Sikringsstørrelse A	10
Spenning V	230
Antall faser	1NPE
Frekvens Hz	50/60
Type elektrisk tilkobling	Stikkontakt
Remarks (misc.)	öppning 365x305 mm

Installation on top of the table

Drop-in bowl dispenser THSG.02

Dimensions:

A x B = flange

E x F = cut out tube

l x b = tube internal

H = build in height

G = flange height

S = effective stacking height

p x q = operating panel

c = build in depth operating panel

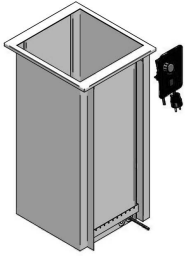
y x z = cut out operating panel

m x n = screw-hole centres operating panel

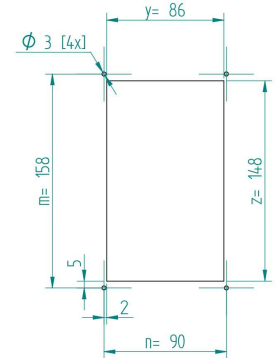
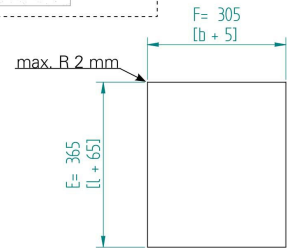
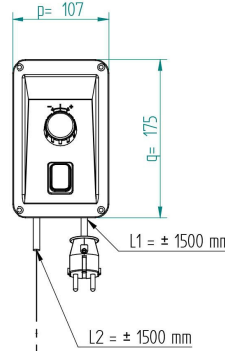
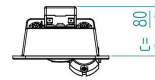
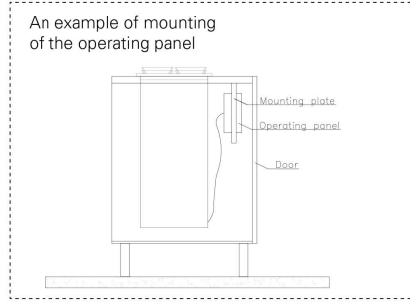
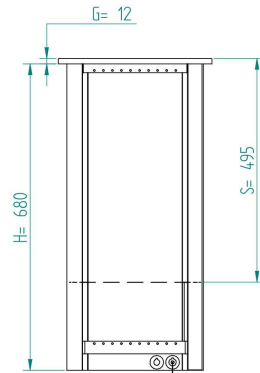
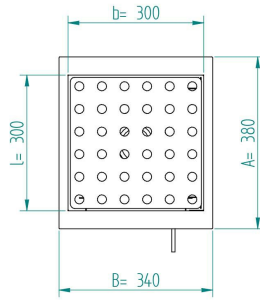
heating element 230V, 400W, 10A

weight (empty): 15 kg

The counter, where drop-in units are installed, must be damp-proof and strong enough to bear the appliance weight.



When constructing the counter, an opening for the connection cable must be considered. The opening must be at least the size of a plug (diameter min. 40 mm). In addition, the edges of the opening must be finished to make sure that the connection cable is not damaged by rubbing against the opening edge.



L1 = length cable with plug
L2 = length cable between tube and operating panel