

## Skåldispenser infällbar Metos THSG.02

Dispenser med värme för soppskålar. Justerbar fjäderkraft enligt skålens vikt

- i möbeln infällbar modell utan sidopaneler
- möbelns minimihöjd 900 mm
- utgör fin soppstation tillsammans med Metos soppkittel
- infällningsdimensioner 365 mm \* 305 mm
- höjd 680 mm



## Skåldispenser infällbar Metos THSG.02

Bredd mm	300
Djup mm	300
Höjd mm	760
Paketvolym	0,082
Volymenhet	m3
Paketvolym	0,082 m3
Längd på förpackning	32
Bredd på förpackning	32
Höjd på förpackning	80
Förpackningsstorlek	cm
Dimensioner på förpackning (LxBxH)	32x32x80 cm
Nettovikt	15
Nettovikt med ental	15 kg
Bruttovikt	17
Vikt inkl. emballage	17 kg
Viktenhet	kg
Anslutningseffekt kW	0,4
Säkringsstorlek A	10
Spänning V	230
Antal faser	1NPE
Frekvens Hz	50/60
Typ av anslutning	Stickkontakt
Remarks (misc.)	öppning 365x305 mm

**Installation on top of the table**

**Drop-in bowl dispenser THSG.02**

Dimensions:

A x B = flange

E x F = cut out tube

l x b = tube internal

H = build in height

G = flange height

S = effective stacking height

p x q = operating panel

c = build in depth operating panel

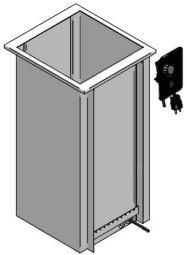
y x z = cut out operating panel

m x n = screw-hole centres operating panel

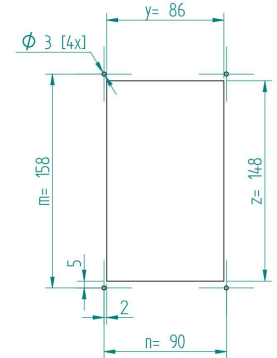
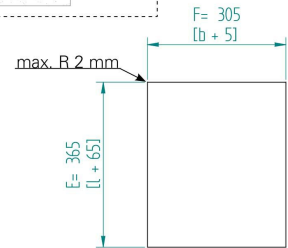
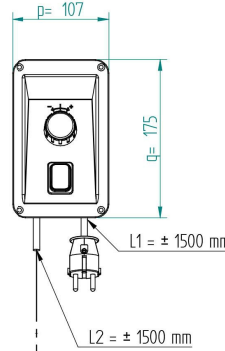
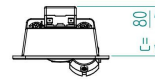
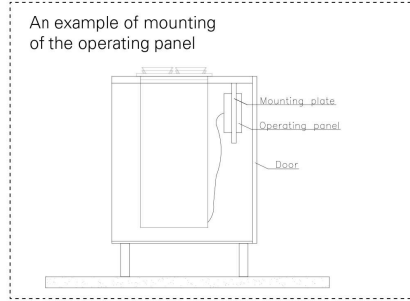
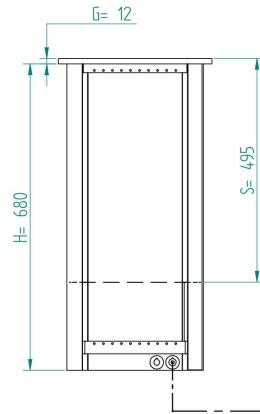
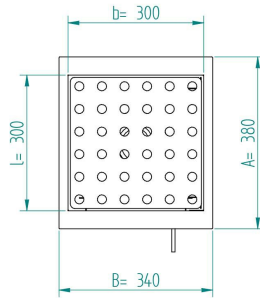
heating element 230V, 400W, 10A

weight (empty): 15 kg

The counter, where drop-in units are installed, must be damp-proof and strong enough to bear the appliance weight.



When constructing the counter, an opening for the connection cable must be considered. The opening must be at least the size of a plug (diameter min. 40 mm). In addition, the edges of the opening must be finished to make sure that the connection cable is not damaged by rubbing against the opening edge.



L1 = length cable with plug  
L2 = length cable between tube and operating panel