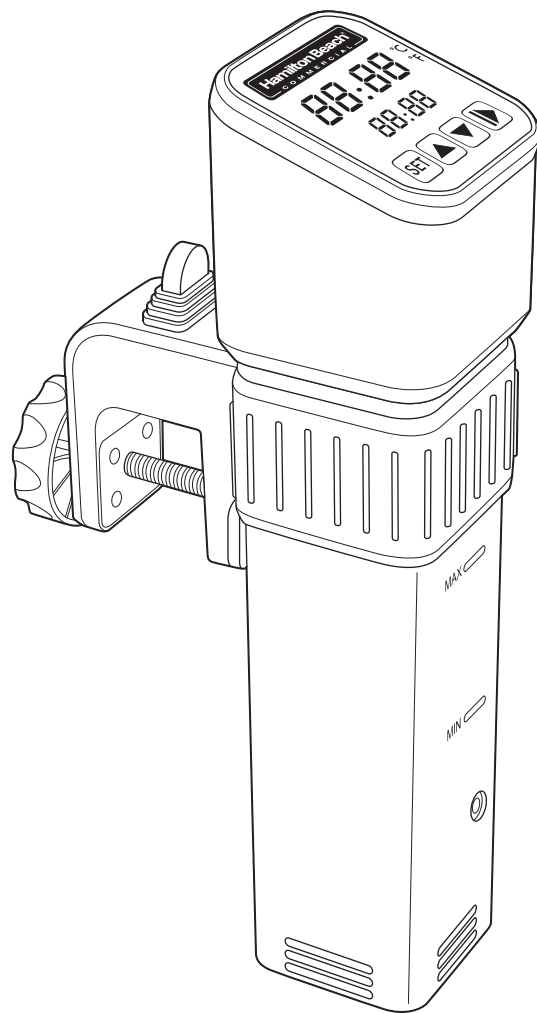


metos

SOUS VIDE IMMERSION CIRCULATOR

Operation Manual

READ BEFORE USE.



Model HSV1000

840305603
05/19

Immersion Circulator Safety

IMPORTANT: This operation manual should be reviewed with all equipment operators as part of your operator training program.

Your safety and the safety of others is very important.

We have provided many important safety messages in this manual and on your machine. Always read and obey all safety messages.



This is the safety alert symbol.

This symbol alerts you to hazards that can kill or hurt you and others.

All safety messages will be preceded by the safety alert symbol and the word "WARNING."

This word means:

! WARNING

You may be killed or seriously injured if you don't follow instructions.

All safety messages will identify the hazard, tell you how to reduce the chance of injury, and tell you what can happen if the instructions are not followed.

IMPORTANT SAFEGUARDS

WARNING – When using electrical appliances, basic safety precautions should always be followed to reduce the risk of fire, electric shock, and/or injury to persons, including the following:

1. Read all instructions.
2. This appliance is not intended for use by persons with reduced physical, sensory, or mental capabilities, or lack of experience and knowledge, unless they are closely supervised and instructed concerning use of the appliance by a person responsible for their safety.
3. This appliance shall not be used by children. Keep the appliance and its cord out of reach of children.
4. Close supervision is necessary when any appliance is used near children. Children should be supervised to ensure that they do not play with the appliance.
5. Do not touch hot surfaces. Use handles or knobs.
6. To protect against electric shock, do not immerse cord, plug, or main body in water or other liquid.
7. Unplug the appliance before removing it from the liquid.
8. Turn the appliance off by pressing and holding start/stop button (▶); then unplug from outlet when not in use, before putting on or taking off parts, and before cleaning. To unplug, grasp the plug and pull from the outlet. Never pull from the power cord.
9. Do not operate any appliance with a damaged supply cord or plug, or after the appliance malfunctions or has been dropped or damaged in any manner. Supply cord replacement and repairs must be conducted by the manufacturer, its service agent, or similarly qualified persons in order to avoid a hazard. Call the provided customer service number for information on examination, repair, or adjustment.
10. The use of accessory attachments not recommended or sold by the appliance manufacturer may cause a risk of injury to persons.
11. Do not use outdoors.
12. Do not let cord hang over edge of table or counter, or touch hot surfaces, including the stove.
13. Do not place on or near hot gas or an electric burner, or in a heated oven.
14. Extreme caution must be used when moving an appliance containing hot oil or other hot liquids.
15. To disconnect the appliance, press the start/stop button (▶); then remove plug from wall outlet. To unplug, grasp the plug and pull from the outlet. Never pull from the power cord.
16. Do not use appliance for other than intended use.
17. Do not use with any liquids other than water.
18. Do not operate the appliance dry, outside of water.
19. After unplugging the appliance, the stainless steel housing and heater will remain hot and should not be touched or placed on combustible surfaces. Allow unit to cool before handling.
20. Do not immerse the appliance above the MAX water level line. The enclosure water ingress rating is IPX7; short-term immersion. If the appliance becomes completely submerged, do not reach into the water. Unplug the appliance and allow it to cool before removing from the water. Allow the appliance to dry completely before use.
21. Do not operate the appliance by means of an external timer or separate remote-control system.

– SAVE THESE INSTRUCTIONS –

NOTE: Failure to follow cleaning instructions will void the warranty. Minimise the use of alkaline cleaners to avoid damage to the finish.

For Commercial Use Only

Other Consumer Safety Information

This appliance is only intended for the preparation, cooking, and serving of foods. This appliance is not intended for use with any nonfood materials or products.

⚠ WARNING Electrical Shock Hazard: This appliance is provided with a grounded (3-prong) plug to reduce the

risk of electric shock. Do not defeat the safety purpose of the plug by modifying the plug in any way or by using an adapter. If the plug does not fit into the outlet, have an electrician replace the outlet.

⚠ WARNING



Electrical Shock Hazard

Plug into a grounded outlet.

Do not remove ground.

Do not use an adapter.

Do not use an extension cord.

Do not submerge above the MAX line.

Failure to follow these instructions can result in death, fire, or electrical shock.



Recycling the Product at the End of Its Service Life

The wheeled bin symbol marked on this appliance signifies that this equipment should be taken over by a selective collection system conforming to the WEEE Directive so that it can be either recycled or dismantled in order to reduce any impact to the environment. The user is responsible for returning the product to the appropriate collection facility, as specified by your local code. For additional information regarding applicable local laws, please contact the municipal facility and/or local distributor.

Technical Services

For assistance or replacement parts, call or email

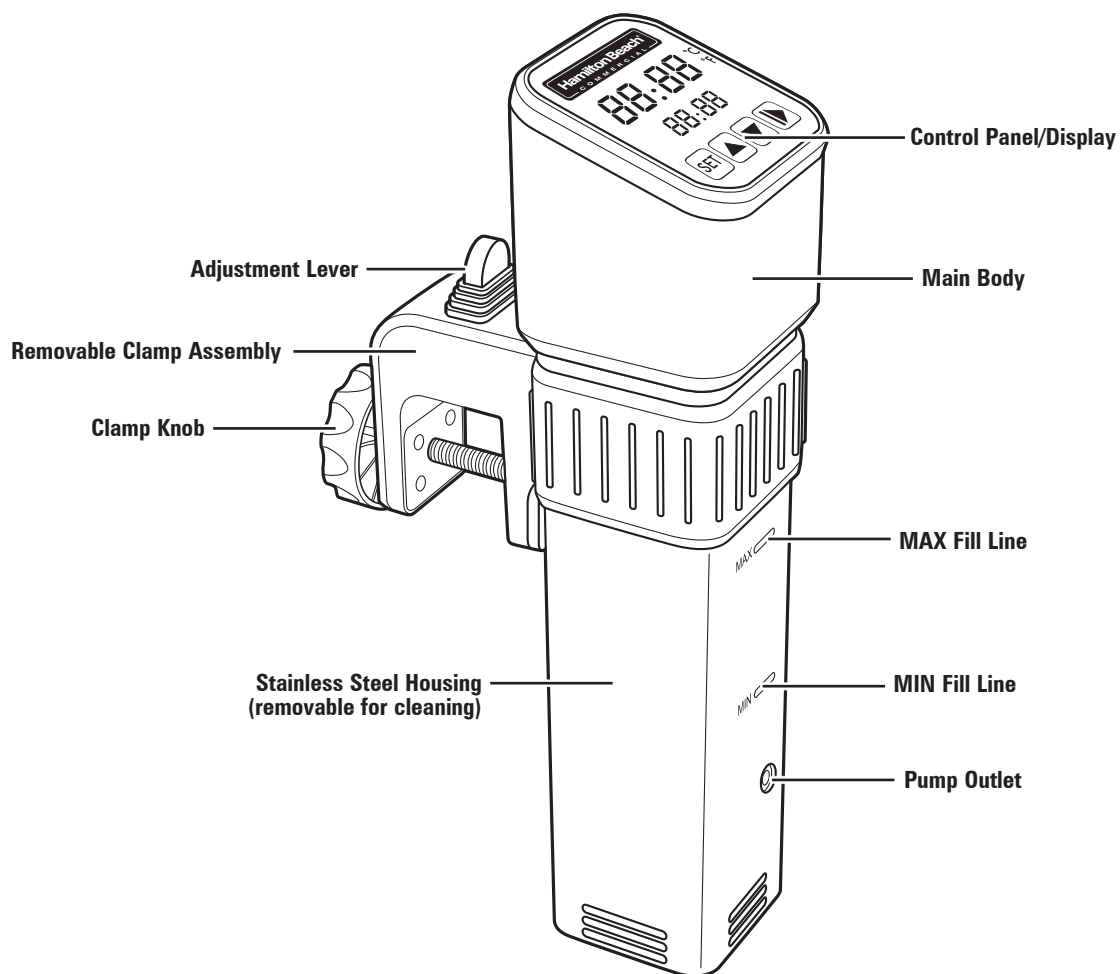
Technical Services:

**866-285-1087 (USA, Canada) or +1-910-693-4277
commercial.support@hamiltonbeach.com**

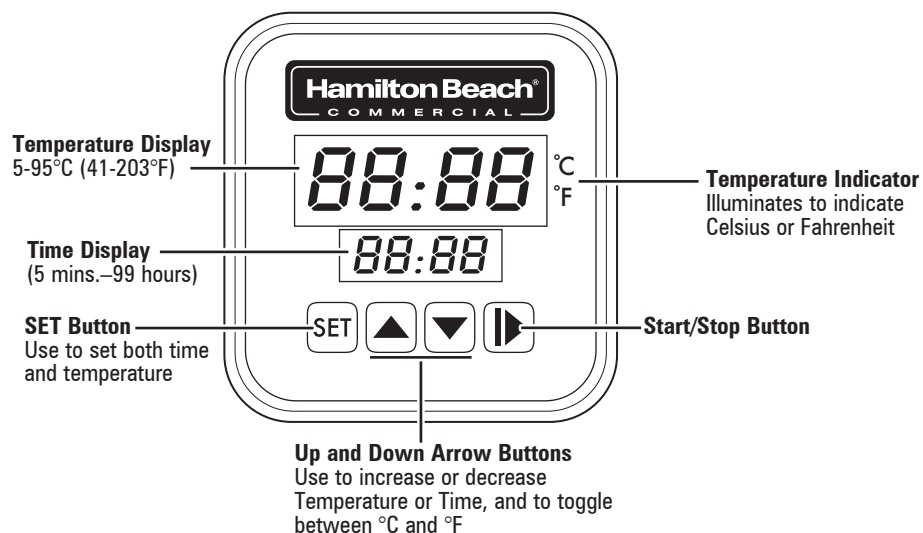
**APAC Region: +86-400-930-2722,
hbcapac.support@hamiltonbeach.com**

www.hamiltonbeachcommercial.com

Parts and Features



Using the Control Panel/Display



Before You Begin

⚠ WARNING Electrical Shock Hazard. Do not submerge above the MAX water level line. If the appliance should become completely submerged, unplug—do not reach into water—and allow it to cool before removing it from the water. Allow the appliance to dry out completely before use.

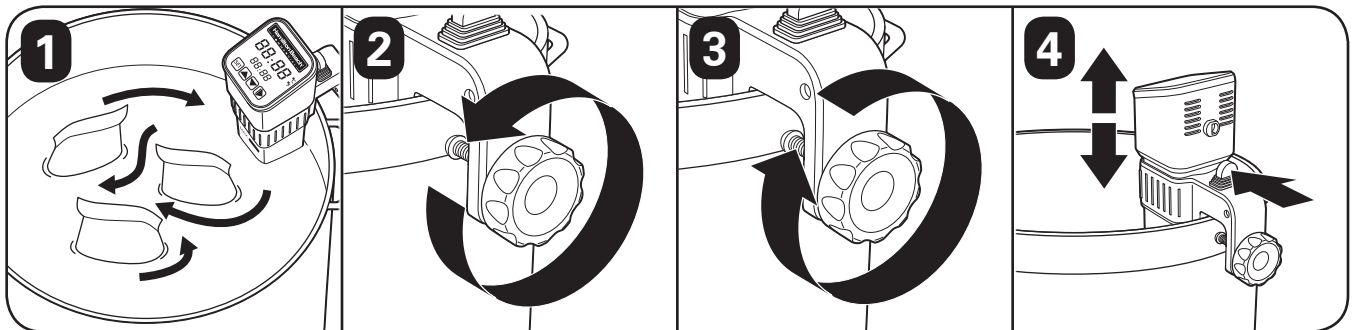
NOTE: All foods must be sealed before immersing in water. Never add unsealed foods to water.

Do not plug in the Immersion Circulator until you have completed the following steps:

1. Choose a rigid plastic or metal vessel or container that can hold up to 30 L (8 gallons), is suitably rated for temperatures above 95°C (203°F), and is at least 12 cm (4 1/2") or greater in depth. Water should never be above MAX Fill Line or below MIN Fill Line; add or remove water if necessary. The vessel should be large enough to allow water to circulate between and around sealed food. Water will circulate even if base of Stainless Steel Housing is resting on vessel bottom.
2. To secure Clamp Assembly to vessel or container, loosen Clamp Knob by turning it counterclockwise.
3. Slide Clamp Assembly of Circulator onto side of container and secure Clamp Assembly by turning Clamp Knob clockwise until it clicks; this prevents overtightening.
4. The Circulator can be adjusted up or down by pushing Adjustment Lever towards Circulator.

NOTE: The Clamp Assembly Adjustment Lever allows Circulator to be removed from vessel for cooling or cleaning without having to remove Clamp Assembly.

5. Fill the vessel with water. Keep in mind that when your sealed food is added, the water level could rise above the MAX Fill Line. Always keep water level between MAX and MIN Fill Lines.



Operation

1. If necessary, adjust water level, then plug Immersion Circulator into outlet.

NOTE: This Circulator has an internal memory feature that allows it to stop and start at same point of operation when last unplugged. Always press **▶** (Start/Stop) Button until light is no longer illuminated before unplugging. When Circulator is plugged in again, the display will light up, then show current water temperature and previous time set.

2. Press and hold both **▲** and **▼** Buttons for 5 seconds to toggle between °C and °F. The default temperature is in Celsius.
3. Press **SET** (SET) Button to change time and temperature settings. Time or temperature will flash to indicate which setting is being adjusted.
4. Press **SET** (SET) Button once to select temperature. Temperature will flash, indicating temperature can be adjusted.
5. Press **▲** or **▼** Button to adjust temperature.
6. Press **SET** (SET) Button again and time will flash, indicating time can be adjusted.
7. Press **▲** or **▼** Button to adjust to desired cooking time. Press **SET** (SET) Button again to save adjusted time.

NOTE: If **SET** (SET) Button is pressed with no change to temperature or time, display will stop flashing in 12 seconds.

8. Press **▶** (Start/Stop) Button. Water begins heating and Temperature Display shows current water temperature. Circulator beeps when set temperature is reached.
9. For even cooking, add pouches to water, making sure pouches do not touch and water can circulate around each. Press **▶** (Start/Stop) Button to start timer countdown and ":" will flash on Time Display.
10. Circulator will beep once when timer reaches 00:00 and will continue to maintain set temperature until Start/Stop Button is pressed. Press and hold **▶** (Start/Stop) Button until light is no longer illuminated and "OFF" is on display. Unplug.

Cleaning and Maintenance

⚠ WARNING Electrical Shock Hazard. Disconnect power before cleaning. Do not submerge cord, plug, or unit in any liquid.

General Cleaning After Regular Use

1. Dry Circulator and Clamp Assembly with a soft cloth before storing.
2. **To remove Clamp Assembly:** Remove Circulator from Clamp Assembly by pushing and holding Clamp Assembly Adjustment Lever towards Circulator. This allows the Clamp Assembly to slide down and off Circulator, or for Circulator to be pulled up to remove.

Heavy Cleaning After Prolonged Use

Clean (CLEAR) Cycle

When this cycle is running, the Immersion Circulator is programmed to operate for 3 hours once the vinegar/water temperature reaches "80°C" (176°F).

NOTE: CLEAR will show in display after 100 uses. When this appears, complete the steps below:

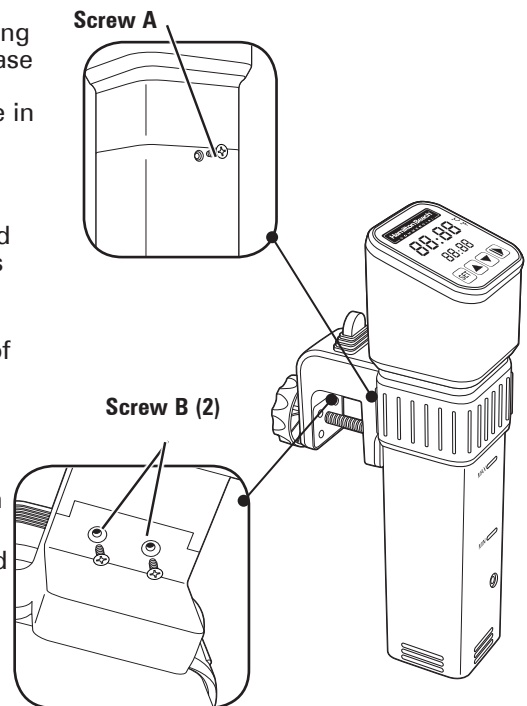
1. Unplug Circulator and allow to cool before removing from water.
2. Attach Circulator to vessel, add 1:9 solution of white vinegar to water. Vinegar solution should always be between MIN and MAX Fill Lines on Stainless Steel Housing.
3. Plug into outlet while pressing and holding **SET** (SET) and **▼** buttons until a cycle count appears.
NOTE: "1.0" will display at the first cleaning cycle and will count up for each subsequent cleaning cycle.
4. Release buttons; default cleaning settings of "80°C" (176°F) and "03:00" will appear on display.
5. Press **▶** (Start/Stop) Button to start Clean Cycle. Once temperature is reached, press **▶** (Start/Stop) Button for timer to begin.
6. When "00:00" appears in display the unit will beep and Clean Cycle is complete, press **▶** (Start/Stop) Button to stop the cycle.

Cleaning the Stainless Steel Housing

1. **To remove Stainless Steel Housing:** Using a Phillips-head screwdriver, turn Screw A on back of Stainless Steel Housing counterclockwise to remove, and slide Stainless Steel Housing down. Stainless Steel Housing is dishwasher-safe.
2. **To replace Stainless Steel Housing:** Slide Housing over coils, aligning Stainless Steel Housing Screw A opening with screw opening on base of Circulator. Insert Stainless Steel Housing Screw A into opening. Using a Phillips-head screwdriver, turn Screw A clockwise to secure in place.

Cleaning the Clamp Assembly

1. Remove Immersion Circulator from Clamp Assembly by pushing and holding Clamp Assembly Adjustment Lever towards Circulator. This allows the Clamp Assembly to slide down and off Circulator, or for Circulator to be pulled up to remove.
2. Using a Phillips-head screwdriver, turn one Screw B on underside of Clamp Assembly counterclockwise to remove; repeat process with second Screw B.
3. While holding Clamp Knob in one hand and other half of Clamp Assembly with other hand, pull apart to separate.
4. **To remove silicone cover on Adjustment Lever to clean:** Pull up on cover and wash in hot, soapy water. Rinse and dry.
5. **To reassemble Clamp Assembly:** Slide the two pieces together, and using a Phillips-head screwdriver, turn one Screw B clockwise until secure; repeat with remaining Screw B.



Troubleshooting

Circulator will not turn on.

- Check to ensure that Immersion Circulator is securely plugged into an electrical outlet.
- Check to see if there is a problem with the outlet, if fuse for electrical outlet has blown, or if a circuit breaker has tripped.

Water temperature is not rising.

- The water temperature may be close to set (programmed) temperature. Check set temperature.
- Temperature sensor may not be working. Call Technical Services for assistance.
- Heater may not be working. Call Technical Services for assistance.

Water temperature is above set temperature.

- Temperature sensor may not be working. Restart Circulator.
- Water may not be circulating. Call Technical Services for assistance.

H₂O shows on display.

- Circulator may not be in water. Add Circulator to water and follow instructions in “Before You Begin” section.
- Water level may be too low or too high. Add or remove water as needed, making sure water is between the MIN and MAX Fill Lines.

Circulator is on, but Control Panel shows no display.

- Call Technical Services for assistance.

Circulator is making high-pitched noise.

- There may be air inside of the pump. Loosen Clamp Assembly; keeping Circulator in water, shake Circulator a few times to discharge air from pump propeller.
- There may be debris inside pump. Follow instructions in “Cleaning and Maintenance” section.

CLER shows on display.

- Circulator needs to be cleaned. Follow instructions in “Cleaning and Maintenance” section.

E02 shows on display.

- Heater may not be functioning. Unplug and discontinue use. Call Technical Services for assistance.

Water flow rate has decreased.

- See “Clean (CLER) Cycle” in “Cleaning and Maintenance” section.